



Quick search article Search help Support (FAQ) How to donate Help mods.dk About mods.dk Advertising



IC-V80 MARS/CAP

Icom Menu

Contact author:
Angel Torres WP4BSJ

Print

Main Menu

- My account
- Modification
- Homebrew
 - Forum
 - Manuals
 - Pictures

Modification database:

- Adi
- Alinco
- AOR
- Bosch
- Drake
- Heathkit
- Icom
- Kantronics
- Kenwood
- MFJ
- Midland/Alan
- Motorola
- Radio Shack
- Ramsey
- Regency
- Standard
- Storno
- Uniden
- Yaesu
- TNC
- Other

Note: We are not responsible for any damage to the radio. The modification of the radio is at your own risk.

- Remove both the antenna and the battery pack.
- Remove the 2 screws on the bottom of the radio.
- Remove the nut on the BNC antenna jack.
- Very carefully lift the front cover and disconnect the speaker plug.
- At the bottom right of the LCD Display (near the power switch) look for a sole diode and remove it.
- Reassemble the radio in reverse order.

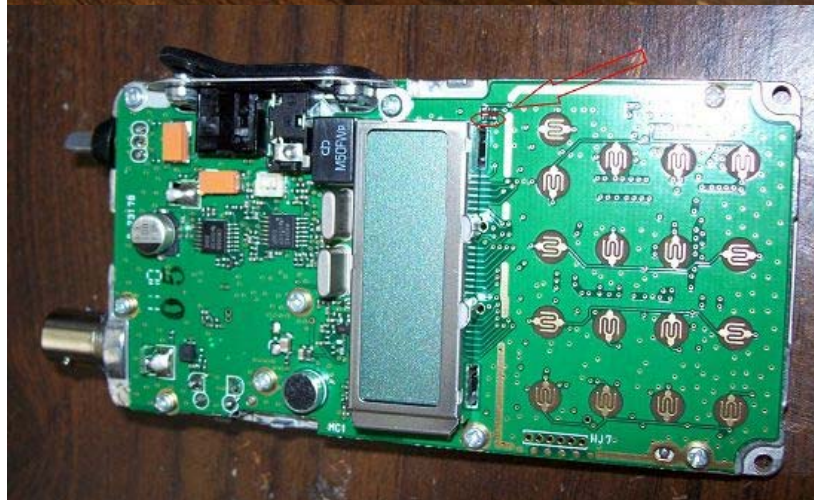
There is no need to reset the radio, just turn on the radio and you will have coverage from 136Mhz to 174Mhz on TX and RX

Thanks to JOHAN ROOS for the pictures.

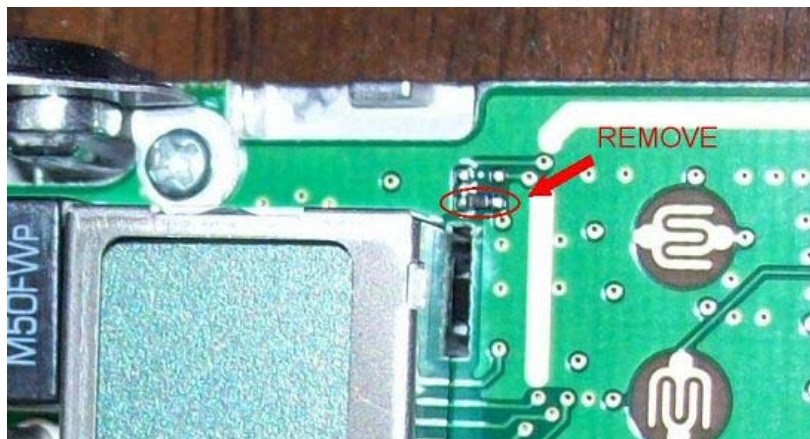


Manuals
Pictures

- misc
- ah-3
- ah-4
- at-120
- at-160
- at-500
- hm-36
- hm-56
- hm-75
- hm-77
- hm-103
- hm-118
- hm-131
- hm-133
- hm-154
- i290
- ic-02
- ic-03
- ic-04
- ic-2
- ic-2at
- ic-2gat
- ic-2ge
- ic-2gxat
- ic-2ia
- ic-2kl
- ic-2sat
- ic-2se
- ic-2sra
- ic-3
- ic-3j
- ic-4
- ic-4gxat
- ic-4kl
- ic-4sat
- ic-4se
- ic-22
- ic-24
- ic-25
- ic-27
- ic-28
- ic-32
- ic-37
- ic-40
- ic-45
- ic-77



- ic-78
- ic-80
- ic-91
- ic-92
- ic-207
- ic-208
- ic-210
- ic-211
- ic-228
- ic-229
- ic-240
- ic-245
- ic-251
- ic-260
- ic-271
- ic-275
- ic-281
- ic-290
- ic-338
- ic-400pro
- ic-448
- ic-451
- ic-471
- ic-475
- ic-481
- ic-490
- ic-505
- ic-551
- ic-575
- ic-701
- ic-703
- ic-706
- ic-706mkii
- ic-706mkliig
- ic-707
- ic-718
- ic-720
- ic-725
- ic-728
- ic-729
- ic-730
- ic-735
- ic-736
- ic-737
- ic-738
- ic-740
- ic-745
- ic-746
- ic-746pro
- ic-751
- ic-756
- ic-756pro
- ic-756pro2
- ic-756pro3
- ic-761
- ic-765



This article has been read 1621 times.

Forum message list for article: "IC-V80 MARS/CAP"

	Date	Author	Subject
1.	22 Jan 2011	Jörg Ewald	(0) IC-V80E
2.	25 Dec 2010	Charlie Wooten	(0) additional step for IC-V80 mod
3.	26 Mar 2010	Larry Jacobs	(1) V80 Mod
4.	15 Mar 2010	Wayne Leroy	(1) 100.000-200.000



[Click here to write a new message or comment for the selected article.](#)

This message list is related to the article: [IC-V80 MARS/CAP](#) for **Icom - IC-V80** from: 27 Feb 2010. If you want to see all message from IC-V80 (this also include message that not belong to an article will be listed), then click [here](#) or on the IC-V80 button in the right side.

What do you think about this article? Was it good or was it poor, or some place between. On the speedometer you can see what other has vote about this article. If you want to vote this article select the number you think match and click vote. **Note you can only vote an article one time.**

Hold mouse over image or radio button to see details. [Click here for more information about vote.](#)



voted: 4.29

1 Useless

2 Not good

3 OK

4 Very good

5 Fantastic

Articles for Icom 'IC-V80'

Uploaded	Description
27 Feb 2010	IC-V80 MARS/CAP. (Selected article)

[Click here to view all the ABOVE modifications for IC-V80 in one page.](#)
Note that page can take a while to load, if there are many modifications.

This forum message list include all message for that is related to IC-V80, this include message that also is related to articles. If the message is relate to an article, the article can be selected next to each message.

Date	Author	Subject
------	--------	---------

- ic-775
- ic-780
- ic-781
- ic-820
- ic-821
- ic-900
- ic-901
- ic-910
- ic-970
- ic-1200
- ic-1271
- ic-1275
- ic-2000
- ic-2100
- ic-2200
- ic-2300
- ic-2320
- ic-2330
- ic-2340
- ic-2350
- ic-2400
- ic-2410
- ic-2500
- ic-2700
- ic-2710
- ic-2720
- ic-2725
- ic-2800
- ic-2820
- ic-3200
- ic-3210
- ic-3220
- ic-3230
- ic-4008
- ic-4088
- ic-7000
- ic-7100
- ic-7200
- ic-7400
- ic-7410
- ic-7600
- ic-7700
- ic-7800
- ic-9100
- ic-a20
- ic-a24
- ic-delta1
- ic-e7
- ic-e90
- ic-f3/4
- ic-e92
- ic-e2820
- ic-f10
- ic-f11
- ic-f12
- ic-f27