

A User's Guide for the X1M PRO (Platinum) Transceiver



Frederick A. Lesnick, VE3FAL
Paul W. Ross, W3FIS
Charles O. Vest, W5COV
Revision 3.1.5 – 12/30/2013

This guide is for the X1M HF PRO (Platinum) model QRP transceiver, manufactured by Chongqing Xiegu Technology Co., Ltd. of China. Mr. Ed Griffin, of Import Communications, Inc, imports the radio into the United States.

Technical Specifications

The published specifications for the radio are as follows:

Receive: 0.1 - 30MHz continuous.

Transmit:

- Band 1 3.5 – 4.0 MHz (80 Meters)
- Band 2 7.0 – 7.3 MHz (40 Meters)
- Band 3 14.0 – 14.35 MHz (20 Meters)
- Band 4 21.0 – 21.45 MHz (15 Meters)
- Band 5 28.0 – 29.7 MHz (10 Meters)

The full range of transmission from 0.1 to 30 MHz is available with suitable external bandpass filters. Otherwise, transmission is limited to the listed amateur bands via internal programming.

Operating modes: USB, LSB, and CW.

Receiver sensitivity: better than 0.45 μ Volts.

RF power output: 4.5 Watts.

Frequency stability: better than 0.5 parts per million.

Memory storage locations: 32 pairs of VFO settings (both VFOa and VFOb)

Operating voltage: 9.6 – 14.5 Volts DC

Receive/Standby current: 0.5A

Transmitting current: 1.8A, Maximum

Size: 97 x 40 x 155 mm [3-13/16 x 1-9/16 x 6-1/8 inches]

Connecting the Radio



The power jack is a standard 5.5 x 2.1 mm jack coaxial power jack. The center pin is the positive connection, and the outer shell is the negative connection. Connect the radio to a suitable power source of 9.6 to 14.5 volts, direct current.

A key or paddle is connected with a standard 3.5 mm stereo plug. The tip is the “dot,” and the ring is the “dash.” The common connection is to the sleeve. The dit/dah arrangement may be changed in a menu for left-handed operators. For “straight key” operation, use only the tip and sleeve, and leave the ring floating.

The RF antenna connection is a standard BNC female connection.

The COMM connection – this is a standard 9 pin RS-232 connector for computer interfacing. However, the signal levels however, are TTL level signals, *not* the standard RS-232 level signals. An appropriate adapter cable is available for computer connection. **Do not plug the radio directly into a computer fitted with an RS-232 connection.**

A set of headphones may be plugged into the headphone jack on the back panel. This disables the built-in speaker when the headphones are connected.

The supplied microphone plugs into the front panel. The connection is a standard 3.5 mm stereo plug. The microphone is a re-purposed speaker microphone, with the speaker circuit disconnected. Ignore the connection on the microphone for an ear bud. A dab of RTV Silicon rubber can be inserted into the plug for greater mechanical stability. A red LED is activated on the microphone when the PTT switch is pushed.

A set of four small rubber or vinyl feet on the bottom will protect your X1M case from scratches and improve air circulation for cooling, as the case serves as a heat sink.

Screen Icons

R/T Receive mode /Transmit mode.

USB/LSB/CW Current operating mode.

PRE Receive pre-amplifier is on when there is a solid dot on the icon.

SPL Split-Frequency Mode is on when there is a solid dot on the icon.

Key Symbol – keyer speed.

RIT Receiver Incremental Tuning. Change the value with the frequency knob.

CH00 Memory mode operating channel being used. No digits shown when in VFO mode.

07.209.000 VFO mode current operating frequency. The active VFO is the top one.

V-B VFOb frequency.

V-A VFOa frequency.

KYR Keyer mode. Manual, auto left, auto right.

Lock Symbol Keyboard lock mode. All functions except on/off and volume disabled.

Loudspeaker Mute on/off for indicator “beeps.”

Operating Controls

Control of the various functions of the transceiver is through the buttons and knobs on the front on the unit. Pressing and holding the F5 key will return the build date/time and firmware release version of the unit. Press the frequency knob to return to normal operation. The firmware may be updated by the user. The **LK/SYS** key either locks the function keys (short push), or allows access to the system menu (long push).

Power off/on and volume – This is the knob on left side. Rotate it clockwise to turn the radio on, and increase the volume.

There are a series of four menus, which are accessed though successively pushes of the frequency knob on the right hand side of the front panel. The function keys – F1 through F5 correspond to the five various items directly over the function keys.

Screen 1:



TS+: Frequency Step up. Underline shows digit that can be changed. Move with frequency knob.

MD: Mode for LSB-USB-CW.

A/B: Toggle between VFOa and VFOb.

A=B: Set VFOa and VFOb the same. Active VFOa into inactive VFOb.

TS-: Frequency Step down. Underline shows digit that can be changed. Move with frequency knob.

Screen 2:



V/M: Frequency mode or Channel mode.

MC: Under channel mode, clears the current selected channel.

V>M: Save the VFO frequencies and modes to the currently selected channel.

Screen 3:



PRE: Turn the preamplifier on or off.

KS: Keyer Speed – adjust with Frequency Knob, press KS again to set.

SPL: Run in “split” mode.

Screen 4:



RIT: Receiver incremental tuning on/off. If on, set with frequency knob. Normal frequency setting is inhibited.

MUT: Mute the system beep.

KYR: Key mode (manual, automatic left hand, or right hand mode).

Changing the Frequency Setting – This is done with the right-hand knob. Rotate to set the radio to the desired frequency. Use F1 or F5 to move to the desired digit to change.

Storing Frequencies into Memory

1. Set VFO frequency and transmit mode, and preamp options as desired. The system will remember the mode and preamp setting as well as the frequency. Both **VFOa** and **VFOb** are stored to memory. When in memory mode, the **A/B** button will toggle between the two stored VFOs.
2. Press the V/M button to enter memory mode.
3. Rotate the frequency knob until the word "Blank" appears above a channel number, unless you want to write over an existing stored channel value.
4. A long press of the V>M button stores the VFOs and modes into the desired channel. Press V/M a second time to confirm the change.

Channel selection is determined in memory mode by rotating the frequency knob. There are effectively 64 memory storage locations in pairs. See the following for use of the split mode, where storing VFO pairs is useful.

Doing "splits" with the two VFOs

Set desired *transmit* frequency into VFOb. Set the desired *receive* frequency into VFOa. Activate the SPL mode. Reception will be from VFOa and transmit will be from VFOb. Splits only work in the SSB modes. VFOa and VFOb can be reversed with the A/B key. Transmission is from the inactive VFO.

Systems Menu

Like all modern ham radios, the functionality and options for the radio are programmed via an extensive set of internal menus. To access the various menus, press and hold the **LK/SYS** button for two seconds to give access to the following functions. Make sure the keyboard is *not* locked!



Rotate the frequency knob to select the desired menu item. Press the knob again to allow alteration of the value. Use the frequency knob and F1/F5 keys to select the desired digit. When you are done, press LK/SYS again for a "Yes – No" to save or not save the settings. Use the frequency knob to select "Yes" or "No." Press the frequency knob to make your selection and return to normal operation. The various options are as follows:

- 01. IF OFST:** Set the intermediate frequency offset.
- 02. LSB BFO:** Set the LSB BFO frequency.
- 03. USB BFO:** Set the USB BFO frequency.
- 04. CW BFO:** Set the CW BFO frequency.
- 05. CW TONE:** Sets the side tone value in CW mode. Default is 800 HZ.
- 06. CW TDLY:** CW transceiver delay. "QSK" delay
- 07. KYR SPD:** Speed for automatic keyer rate adjustment. Default is 20 WPM.
- 08. TXP TIM:** Transmitting time set. This is to avoid "frying the finals." Works in all modes.
- 09. BRITNES:** Screen intensity setting. The display cannot be turned off.
- 10. CNTRST:** Screen contrast setting.
- 11. FBND TX:** Inhibit transmission on non-amateur frequencies. Spurious radiation will occur when transmitting outside of the five pre-filtered bands shown in the specifications. Some type of external band pass filter should be used if transmitting outside the five Amateur bands!
- 12. DDS CLK:** DDS clock setting.

13. DDS MLT: RCLK Ratio DDS frequency setting.

14. RST ALL: Reset all parameters to factory values. A reset resets *only* the items in this parameter menu. Mode, VFOs, channel memories, etc., are not altered.

A caveat ---

Setting (and storing) Parameter 11 (a value of "1") to the value to "open up" the radio is done at your own risk.

There are two considerations:

1. Out-of-band transmission is enabled. This may be illegal where you live, and may cause interference with other radio services.
2. Spurious transmissions may occur when transmitting out-of-band. One strategy to eliminate these is to install a suitable external band pass filter for the band in question (WARC bands, for example), from a company like Kits and Parts. Their web site is at: <http://kitsandparts.com/>.

Use of the Computer Interface

This transceiver can be connected to your computer to operate with the Ham Radio Deluxe software. A built-in CAT interface makes the X1M also suitable for automatic logging and control. The serial interface (9pin Sub-D) on the rear supplies TTL level signals. An optional interface provides a level converter to a USB interface. The interface on the X1M emulates an Icom radio (IC-718). A driver for the cable may be downloaded from <http://www.wouxun.us/> .

Ham Radio Deluxe works satisfactorily with the Icom 718 option. Other command suites should work if they can generate the IC-718 command set. The last free version of HRD/DM780 may be found at: <http://kd8lcd.sopmcincy.org/images/HRD/setuphrd52436.zip>.

The following functions in HRD have been determined to work:

- VFOa and VFOb switching. Toggle option does not work. Select the specific VFO.
- Frequency setting. Change digits, or move slider.
- Frequency change with "fine" indicator at end of slider – increments of 500 Hz.
- Mode switching between LSB/USB/CW.
- Split ON/OFF.
- Preamplifier ON/OFF.
- Memory/VFO switching.
- Memory write – Select desired channel with frequency knob.
- Clear selected memory channel.
- Select memory channel (you get a drop down list). Only entries 01 through 32 work.

Digital modes can be run as well. It will require a suitable interface, such as the Signalink USB interface and appropriate cables for input to the microphone and output from the headphone jack.

Audio Filter Accessory

The Xiegu Technology audio filter is also available as a useful accessory for the X1M transceiver. It is a very useful device to "sharpen up" the pass band for CW work. Alternatively, it may be set for SSB voice use. The center frequency is adjustable from 400 to 1100 Hz, with a bandwidth from 60 to 1800 Hz. It is a switched capacitor audio filter, which provides for the design of a very compact audio filter without the necessity of either bulky or precision components.

The left hand knob sets the center frequency for the filter. When turned on, the unit powers up from the power applied to the rear of the unit (9 volt battery, or 12.8 volt supply), with a standard 5.5 x 2.1 mm power jack. With power off, the filter is bypassed.

The LED on the front between the two knobs indicates that the power on.

The right hand knob sets the overall bandwidth, with maximum bandwidth at full clockwise rotation of the knob. This then provides satisfactory SSB voice reception.

The two jacks on the back are for audio input from the X1M or other audio source, and the output jack provides a signal to headphones, a small loud speaker, or an amplified computer speaker. The jacks are standard 3.5 mm stereo jacks.

Microphone Pin Out

The microphone pin connections are as follows. The microphone connector is a standard 3.5 mm stereo plug. The color coding of the wires may vary, as this is a re-purposed commercial speaker microphone.

- Sleeve** – common. (Black)
- Ring** – PTT button – closure to sleeve. (White)
- Tip** – Microphone. (Red)

Case Removal

1. Disconnect all wiring.
2. Slip both knobs off.
3. Remove the nuts on the volume control and frequency adjustment shafts.
4. Remove **ALL** four screws on front panel. Gently remove the front panel.
5. Remove **ONLY** the two top screws on the back panel.
6. Do **NOT** remove the screw on the bottom of the case! This retains the final amplifier transistor.
7. The top of the case simply slides forward and off.

A 2.5 mm or 3/32" Allen wrench can be used to remove the screws. The 2.5 mm Allen wrench is a better fit.

Re-assembly -- reverse the foregoing procedure. Do not press the frequency knob on too far, or you will not be able to access "push" functions. Make sure that the rubber function buttons clear the holes in the front panel.

Some of the loudspeakers have come loose in transit. A *small* dab of hot glue will take care of this. Check this if things "rattle," or examine the speaker when you have the case off.

Updating the Front Panel

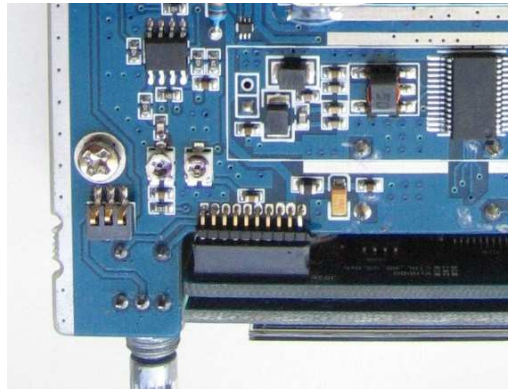
1. Remove the cover and old front panel.
2. Remove any tape attached to the panel or the small blue plate that is included with it.

3. Install the buttons in their respective holes in the faceplate and place the small blue plate behind them. Carefully secure the new panel to the header pins, making sure that no pins are bent in the process.
4. Put on the nuts for the volume control and frequency shafts.
5. Slide on the cover and secure with the four screws on the front panel, and two on the back.

Setting the Side Tone

The side tone is often too loud. This is controlled by an internal trim pot setting.

1. Remove the case – see the foregoing instructions.
2. There are two trim pots on the display end of the board.
3. Note the setting of the trim pots, in the event you need to reset them.
4. The left hand trim pot is for side tone level setting. An adjustment of appropriately 90 degrees clockwise seems to be satisfactory. Put the case back on.



The microphone level trim pot is on the right. It is generally not necessary to adjust the microphone gain pot.

Firmware Update

From time-to-time, firmware updates are made available. To upgrade your firmware, carefully follow these instructions.

First, power up the radio and make a note of the current firmware information by pressing and holding the F5 button. This will be used as a comparison once the firmware upgrade has completed. It may also be worth making a copy of all of the alignment settings by pressing and holding the SYS button. This procedure will NOT change your alignment settings such as the IF OFFSET, LSB/USB BFO etc.

Download the firmware program from the yahoo group files area.

Ensure that the radio is turned *off* prior to starting the update process. Connect your radio to your computer with the proper interface cable. Execute the update software program that you have downloaded.

On the update software, press the program button on the top left hand side. Select the proper Baud rate -- 2400 Baud is appropriate.

Power on the radio – The display on the front of the radio will remain off till the firmware flashing is completed.

After a short delay, at the bottom of the screen you'll notice a "progress bar" which indicates how much of the firmware image has been copied over to the radio. *Do not turn off the radio during the update procedure!* This update procedure can take as long as five minutes. Once the firmware update is completed, the radio will beep as if you have just turned it on.

To confirm the version of the new firmware, press and hold F5 which should either show you the same firmware version as previously (if the firmware update did not work, or the versions are the same), or a newer firmware version indicating build time and date etc.

Alignment Procedure

If you find that the radio sounds "muffled" on either USB or LSB, you likely do not have the radio aligned correctly. This is a simple procedure.

1. Set the IF OFFSET first, or you'll chase your tail. With the radio hooked to an antenna receiving noise but no signal, adjust the IF OFFSET setting until you can switch back and forth between USB and LSB modes and the "wooshing"; or "timbre" sounds about the same. Looking at the audio signal with a program like Spectran is helpful. Save the setting. The IF OFFSET is the adjustment you need to make in a dual conversion receiver's conversion process so as to center the signal up in the final IF filters.
2. Now, adjust USB by moving USB BFO until a voice USB signal received from a local accurate receiver is correct. Save the setting.
3. Adjust LSB by moving LSB BFO until a voice LSB signal received from a local accurate receiver is correct. Save the setting.
4. Adjust CW only after you do the IF OFFSET, USB BFO, and LSB BFO settings. Once you have USB/LSB set to your liking, CW setup is easy. Simply set the CW BFO (Menu Item #4) = to your IF OFFSET value. Go to Menu item #5 and set the CW Tone to the tone you like to listen to when copying the station you are working. Typically the value will be between 500Hz and 800Hz. Note that this value effects only the receive frequency.

Save your changes by pressing the SYS key again, select "Yes," and confirm your choices by pressing the frequency select knob.

One final word is necessary and must be heeded if you are to be zero beat with the station you are working. Because of the way the IF and SSB filter are currently set up in firmware, you will hear both sides of zero beat, when tuning a station on CW. You MUST use the low side of zero beat. If you use the high side, your CW signal will be off zero beat by two times your CW Tone value.

Write down your settings for IF OFFSET, USB BFO, LSB BFO, and CW BFO for future reference.

If you manage to make a mess of things, you can always do a "General Reset," and set the system parameters back to factory values. There are other alternative strategies for alignment, but moving the signal to the center of the IF pass band is the critical issue.

Notes

This will save you some headaches later on. Keep your notebook handy to make notes in for the actual operation of your X1M PRO. Also, note any problems and what you were doing when the problem showed up.

Everyone should access the SYSTEMS MENU and record the present values currently stored for each item in the list. This will allow you to restore these values in the case they get changed for some reason. These values are typical as of release V1.021 of the firmware:

	Function	Factory	My Settings
01	IF OFST	08999850	
02	LSB BFO	08998750	
03	USB BFO	09000950	
04	CW BFO	08999850	
05	CW TONE	0800	
06	CW TDLY	0300	
07	KYR SPD	020	
08	TXP TIM	0000	
09	BRITNES	100	
10	CNTRST	100	
11	FBND	0	
12	DDS CLK	032768000	
13	DDS MLT	1	
14	RST ALL	0	

Acknowledgments

The authors would like to acknowledge specific contributions from the following people:

Ray Motte, KD4HJT, for the photos of the rear panel of the X1M and the side tone trim pot.

Ken Fest, N2LZV, for the photos of the front of the X1M and various screen shots.

Ed Griffin, W4KMA, for providing the initial manuals and answering all sorts of questions, as well as the photo of the front of the transceiver, and firmware update material.

John Tracy, W6SB, for discussions on circuit internals and SWR considerations.

Steven Johnston, WD8DAS, Ken Downs, W1KRT, Heath, VK3TWO/VK6TWO, and Mark Francis, KI0PF for help with the alignment procedures. Heath also provided the firmware update procedure, which we have edited for this manual. Dale Parfitt, W4OP, for clarifying the issues in adjusting CW operation.

Volkmar Junge, DF2SS of WiMo Antennen und Elektronik GmbH, Ed Griffin, Dale Parfitt, and Charlie Vest for working with the factory on firmware and hardware issues.

The Yahoo News Group members of the X1M transceiver group for many helpful suggestions, critiques, and comments.

Frederick A. Lesnick, VE3FAL, Thunder Bay, Ontario
Paul W. Ross, W3FIS, Fenwick Island, Delaware
Charles O. Vest, W5COV, South Coffeyville, Oklahoma