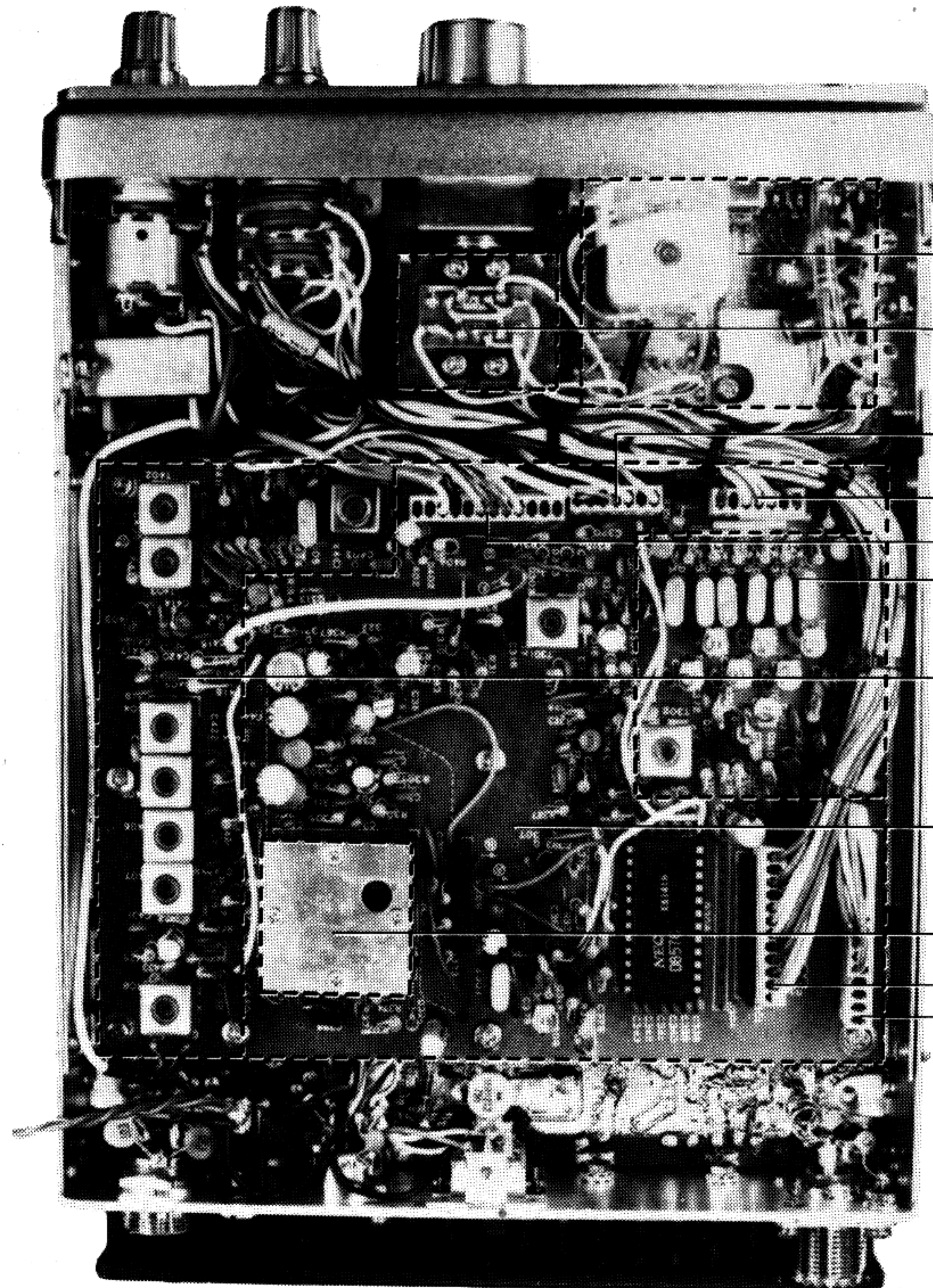


- MAIN UNIT TRANSMITTER SECTION
- MAIN UNIT RECEIVER SECTION
- RED WIRE MUST BE CUT WHEN TONE SQUELCH UNIT IS INSTALLED.
- TONE SQUELCH UNIT (WHEN INSTALLED)
- TONE BURST SECTION



- DISPLAY UNIT
- CHANNEL SELECTOR PHOTO INTERRUPTER UNIT
- P/J<sub>301</sub>
- P/J<sub>302</sub>
- P/J<sub>303</sub>
- PLL LOCAL SECTION
- MODULATOR CONVERTER SECTION
- PLL SECTION
- VCO SECTION
- P/J<sub>304</sub>
- P/J<sub>305</sub>

Figure 10 TOP VIEW

Figure 11 BOTTOM VIEW



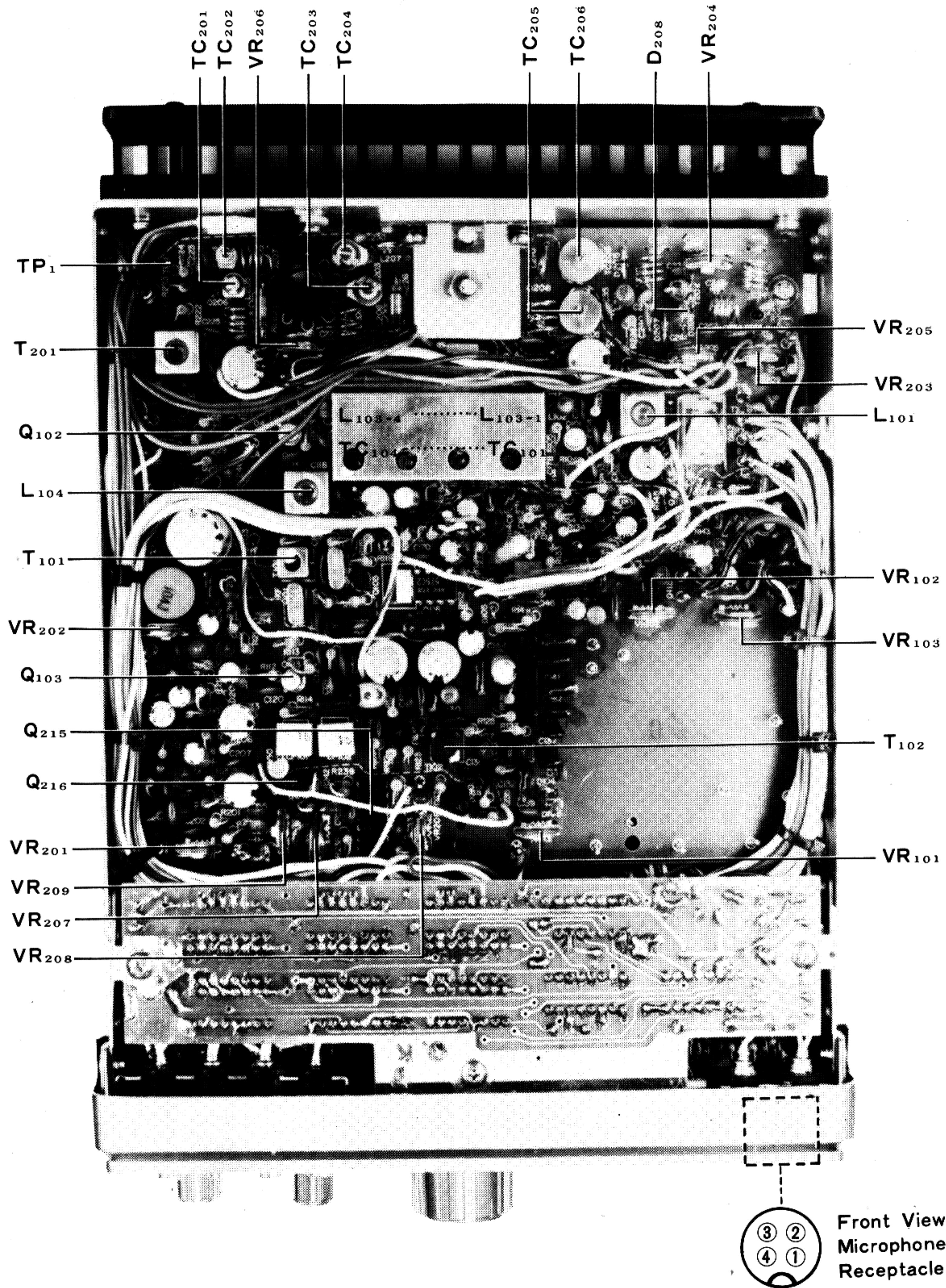


Figure 12

ALIGNMENT POINT



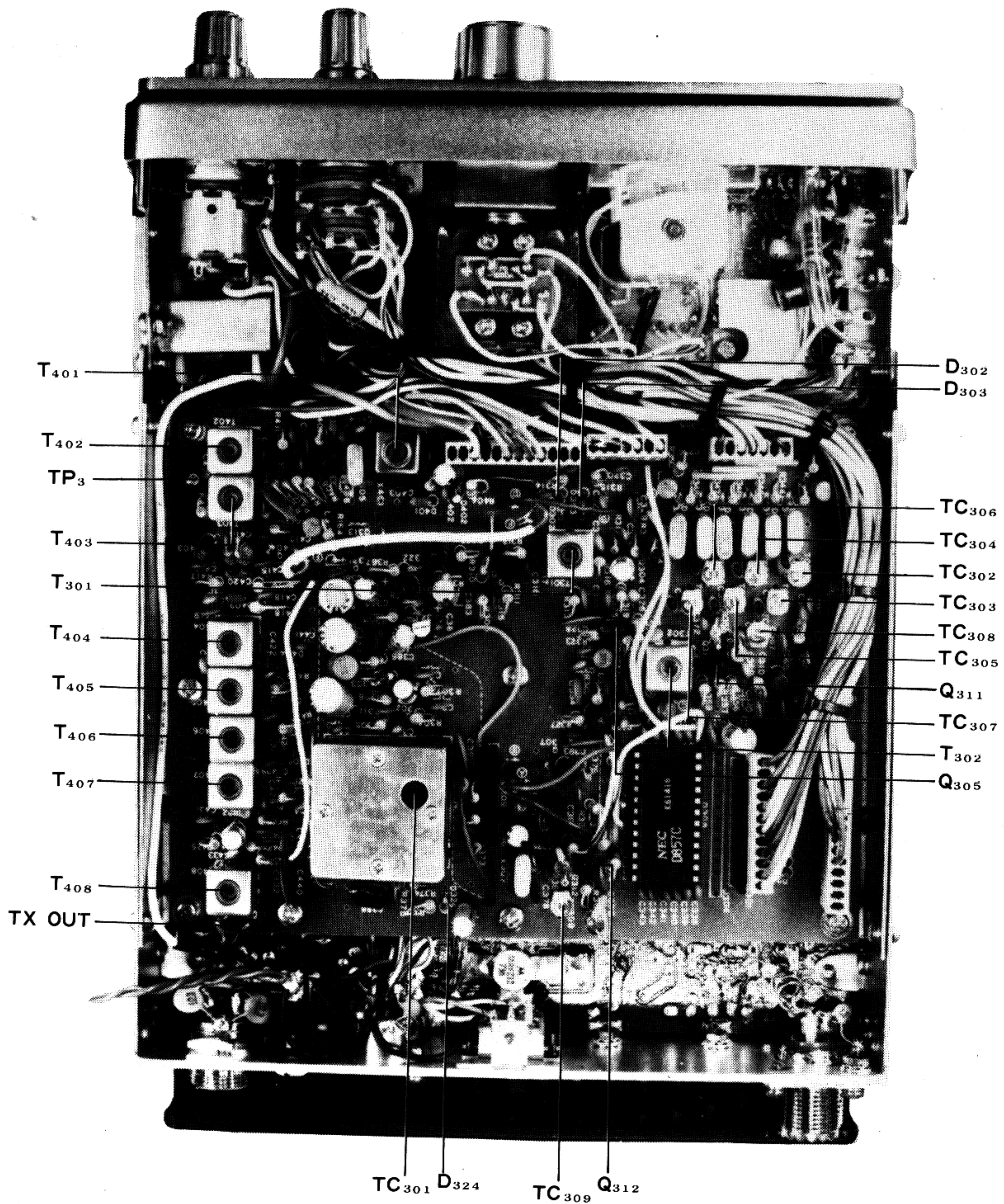


Figure 16 ALIGNMENT POINT

### Optional tone squelch

The optional tone squelch unit has been set to 77 Hz operation at the factory, however, the tone squelch frequency can be chosen to any frequency between 70 Hz to 160 Hz by the setting of VR502. The transmitting level of the tone signal is set by VR504.

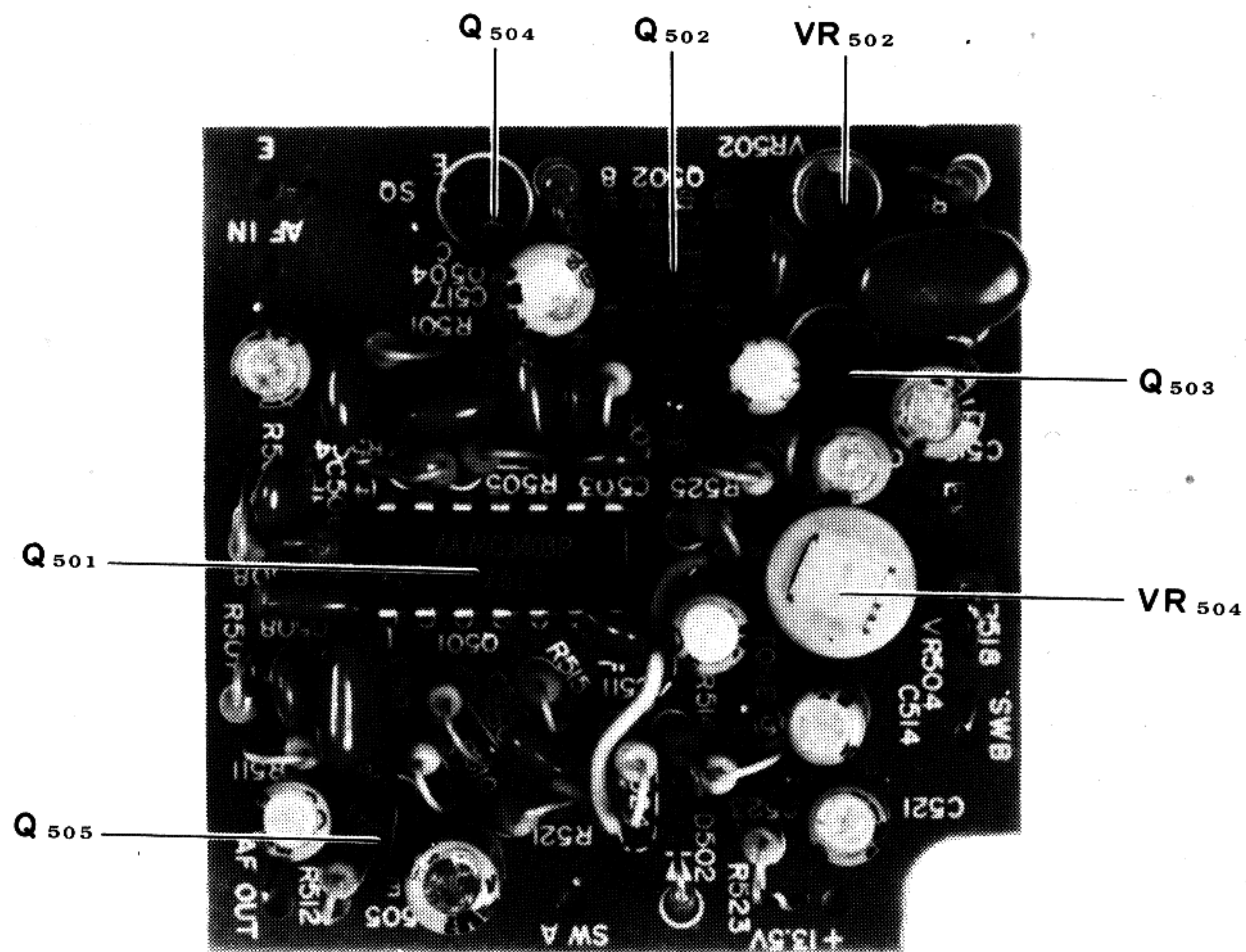
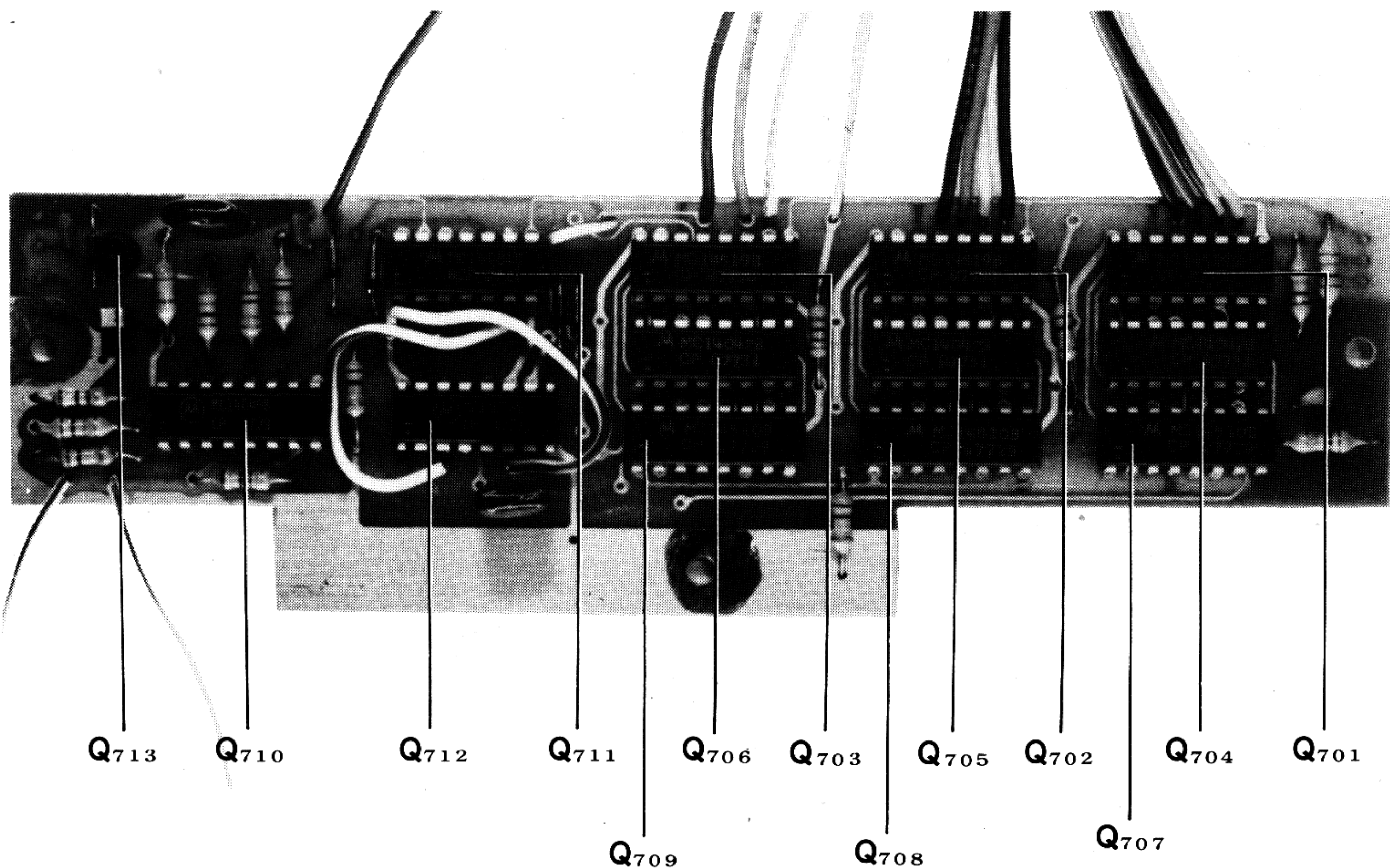
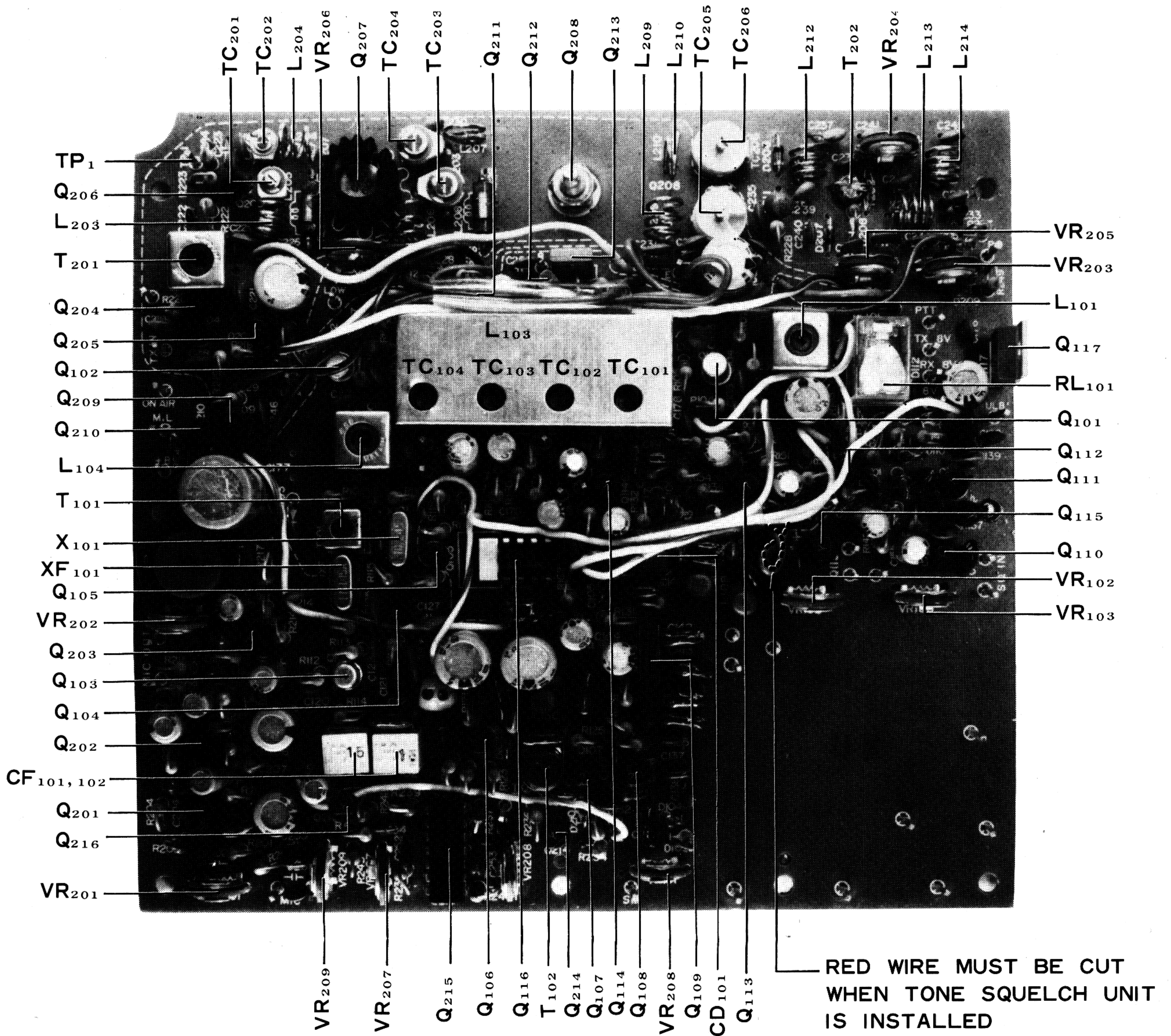


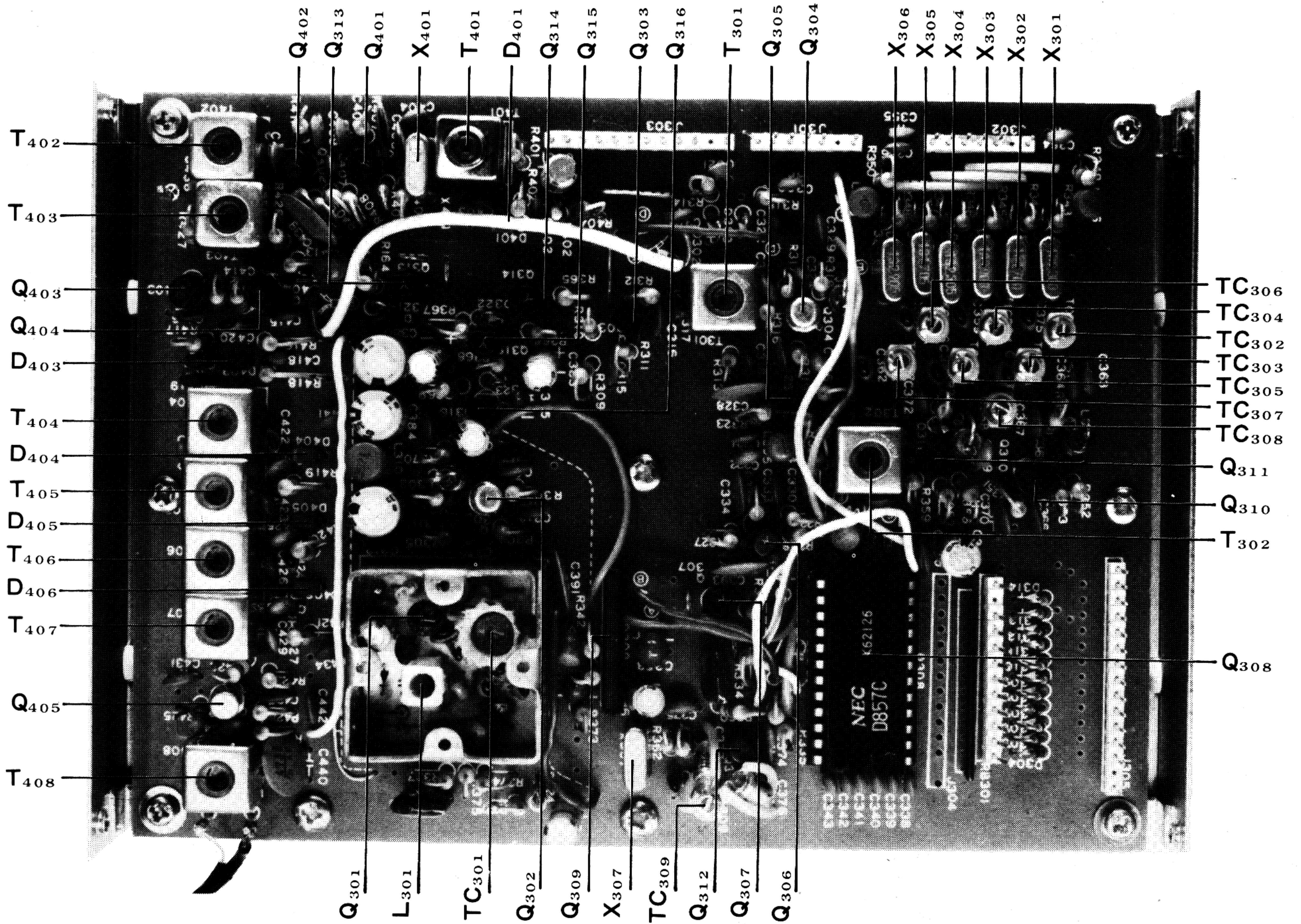
Figure 17



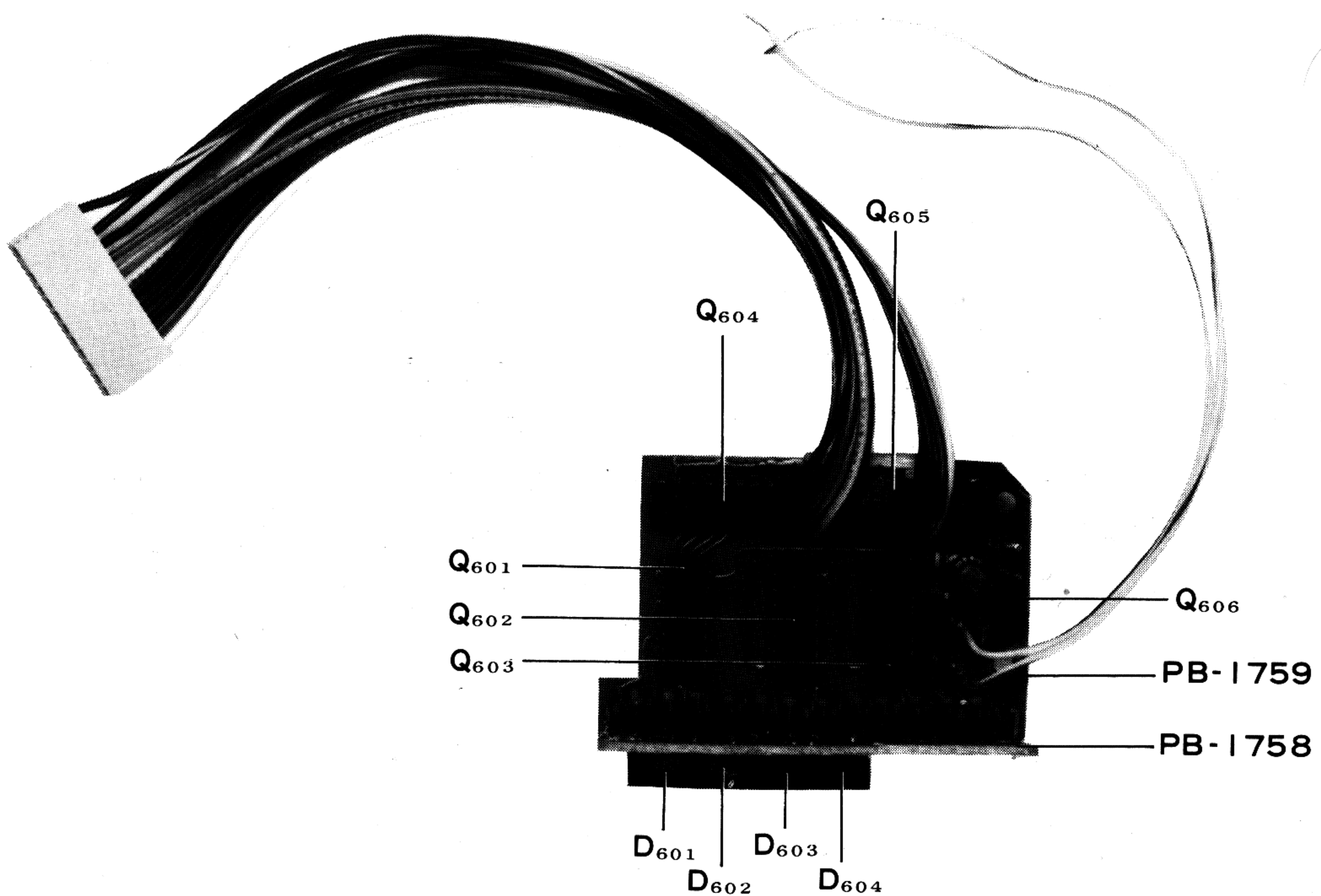


PLL CONTROL UNIT





PLL UNIT



DISPLAY UNIT