



CTCSS/DCS

PX-666

**Range Further,
Penetration Better**

Small Size and Light Weight
Programming By PC Software
Built-in CTCSS & DCS
Channel Scan



Output power : 4W

- Small size and light weight
- Tonal output loud and clear
- 16 storage channels for your easy use
- Sturdy and durability better with better case material
- Power saving and to extend for using time of batteries



www.pxdz.com



PX-666

- Small size and light weight
- Tonal output loud and clear
- 16 storage channels for your easy use
- Sturdy and durability better with better case material
- Power saving and to extend for using time of batteries
- Built-in CTCSS & DCS
- Time-out timer
- Sturdy and durability better with better case material
- Low battery warning
- Human system engineering, perfect handle
- Wide-narrow channel bandwidth optional
- Two-color LED indicator
- Contact range up to 4km in open country
- Battery life: 1200mAh Ni-Mh Battery

GENERAL	
Frequency Range	UHF: 400~430/430~450MHz 450~470MHz
Working Temperature	-20°C ~ +50°C
Operating Voltage	DC 6V
Operate Mode	Simplex or Semi-duplex
Dimension	100mm x 55mm x 32mm (Not included Antenna)
Weight	220g (Including battery)
Antenna impedance	50Ω

TRANSMITTER	
Frequency Stability	±2.5PPM
Output Power	UHF 4W
Max Frequency Deviation	≤5KHz/2.5KHz
Audio Distortion	≤3%
Modulation Character	+3dB ~ -3dB
Adjacent Channel Power	≥65dB
Spurious Radiation	≤7.5μW
Occupied Bandwidth	≤16KHz

RECEIVER	
RF Sensitivity	<0.2μV
Audio Distortion	≤3%
Audio Response	+2dB ~ -10dB
Adjacent Channel Selectivity	≥60dB
Intermodulation Rejection	≥65dB
Spurious Response	≥70dB
Blocking	≥80dB

www.pxdz.com

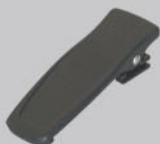
STANDARD ACCESSORIES



Battery



Charger



Belt clip



Antenna

OPTIONAL ACCESSORIES



Earphone



PTT Earphone



Software



Microphone



Programming cable



PX-777 PROFESSIONAL FM TRANSCEIVER

- 128 Channels
- Various Scan Function
- PC-Programmable
- Repeater Compatibility

- Program channel name
- Adjust Power Level





PX-777

PROFESSIONAL FM TRANSCEIVER

- VHF 5W/ UHF 4W output power
- 128 memory channels
- Built-in 50 CTCSS and 104 DCS
- Wide (25KHz) and Narrow (12.5kHz) channel spacing programmable in separate channels
- VOX built-in
- Frequency Scan & CTCSS Scan
- Three different scan type
- Three color LCD backlight display
- Sound Alarm
- Programmable by PC software
- Bell ring when receiving calling
- Priority Scan Function
- Adjust power High/Low
- Switching between Channel/frequency mode
- Display Channel + Frequency mode
- Adjust squelch level (0-9)
- Busy channel lockout
- Reverse Frequency Function
- Channel step 5k, 10k, 6.25k, 12.5k, 25k (2.5K option)
- Optional Frequency range: 136-174Mhz/400-470Mhz/ 240-260Mhz/465-520Mhz
- Self-program
- VFO/MR key to store and delete channel
- Come with 1200mAh Li-ion battery
- Input Frequency directly by keypad
- Keypad lock
- Passed CE&FCC approval/MIL-STD810

GENERAL

Frequency Range	VHF: 136~174 / 245~246MHz UHF: 400~470MHz / 465~520MHz
Working Temperature	-20°C ~ +50°C
Operating Voltage	DC 7.2V
Operate Mode	Simplex or Semi-duplex
Dimension	100mm x 55mm x 32mm (Not included Antenna)
Weight	220g (Including battery)
Antenna impedance	50Ω

TRANSMITTER

Frequency Stability	±2.5PPM
Output Power	VHF 5W / UHF 4W
Max Frequency Deviation	≤5KHz / 2.5KHz
Audio Distortion	≤3%
Modulation Character	+3dB ~ -3dB
Adjacent Channel Power	≥70dB / 60dB
Spurious Radiation	≤7.5μW
Occupied Bandwidth	≤16KHz

RECEIVER

RF Sensitivity	<0.2μV
Audio Distortion	≤3%
Audio Response	+2dB ~ -10dB
Adjacent Channel Selectivity	≥60dB
Intermodulation Rejection	≥65dB
Spurious Response	≥70dB
Blocking	≥80dB

www.pxdz.com

STANDARD ACCESSORIES



OPTIONAL ACCESSORIES





PX-777PLUS

PROFESSIONAL FM TRANSCEIVER

- With Automatic Numbering Identification (ANI) encode & decode
- Scrambler set (invert invoice, keep talk secretly)
- PTT ID
- CCIR Standard 5 tone / Kill & Unkill Miss Radio

- ANI code
- Scrambler





PX-777PLUS

PROFESSIONAL FM TRANSCEIVER

- Program radio channel name
- VHF 5W/ UHF 4W output power
- 128 memory channels
- Built-in 50 CTCSS and 104 DCS
- Wide (25KHz) and Narrow (12.5kHz) channel spacing programmable in separate channels
- VOX built-in
- Frequency Scan & CTCSS Scan
- Three different scan type
- Three color LCD backlight display
- Sound Alarm
- Programmable by PC software
- Bell ring when receiving calling
- Priority Scan Function
- Adjust power High/Low
- Switching between Channel/frequency mode
- Display Channel + Frequency mode
- Adjust squelch level (0-9)
- Busy channel lockout
- Reverse Frequency Function
- Channel step 5k, 10k, 6.25k, 12.5k, 25k (2.5K option)
- Optional Frequency range: 136-174Mhz/400-470Mhz/ 240-260Mhz/465-520Mhz
- Self-program
- VFO/MR key to store and delete channe
- Come with 1200mAh Li-ion battery
- Input Frequency directly by keypad
- Keypad lock
- Passed CE&FCC approval/MIL-STD810

www.pxdz.com

GENERAL	
Frequency Range	VHF: 136~174 / 245~246MHz UHF: 400~470MHz / 465~520MHz
Working Temperate	-20°C ~ +50°C
Operating Voltage	DC 7.2V
Operate Mode	Simplex or Semi-duplex
Dimension	100mm x 55mm x 32mm (Not included Antenna)
Weight	220g (Including battery)
Antenna impedance	50Ω

TRANSMITTER	
Frequency Stability	±2.5PPM
Output Power	VHF 5W / UHF 4W
Max Frequency Deviation	≤5KHz / 2.5KHz
Audio Distortion	≤3%
Modulation Character	+3dB ~ -3dB
Adjacent Channel Power	≥70dB / 60dB
Spurious Radiation	≤7.5μW
Occupied Bandwidth	≤16KHz

RECEIVER	
RF Sensitivity	<0.2μV
Audio Distortion	≤3%
Audio Response	+2dB ~ -10dB
Adjacent Channel Selectivity	≥60dB
Intermodulation Rejection	≥65dB
Spurious Response	≥70dB
Blocking	≥80dB

STANDARD ACCESSORIES



Belt clip

Antenna

Battery

Charger

OPTIONAL ACCESSORIES



Earphone

PTT Earphone

Programming cable

Microphone

Leather case



PX-888

- DTMF ANI encode&decode
- CCIR 5 tone(ZEV1, ZEV2 option)
- Receive FM radio
- Scrambler
- Channel Annunciation
- Hi:4-5W, Low: 0.5-1W output power
- 128 memory channels
- Built-in 50 CTCSS and 104 DCS



LUXING

- Output power 4 W
- Battery Save function
- Low Battery Alert
- Time-out Timer (TOT)
- PC Programming
- Busy Channel Lockout
- Monitor Function
- Scan/priority scan



Palm Size, Compact Design, Beautiful Shape

PX-999 TRANSCEIVER

CTCSS/DCS





PX-999

PROFESSIONAL FM TRANSCEIVER

- Output power 4 W
- Communication range Up To 4 km
- Frequency range: 400-430MHz/ 430-450MHz/ 450-470MHz/136-150MHz/150-174MHz
- Size: 108mmx54.2mmx35.4mm
- Weight about 273 g
- 16 channels (15+Scan 16th CH)
- Palm size, compact design
- CTCSS & DCS Built-in
- 6V/1200mAh Ni-MH battery
- Battery save function
- Low battery alert
- Time-out timer (TOT)
- Squelch level adjustable
- Priority scan
- Carrier-operated scan
- Time-operate scan
- Search scan
- PC programming
- Busy channel lockout
- Monitor function
- Wide/narrow bandwidth
- Beep tone

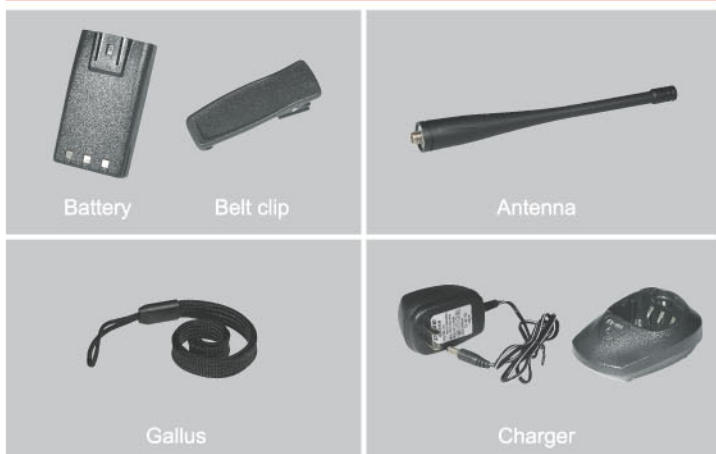
GENERAL	
Frequency Range	400-430MHz/ 430-450MHz/ 450-470MHz/136-150MHz/150-174MHz
Working Temperature	-20°C ~ +50°C
Operating Voltage	DC 6V
Operate Mode	Simplex or Semi-duplex
Dimension	108mmx54.2mmx35.4mm (Not included Antenna)
Weight	273g (Including battery)
Antenna impedance	50Ω

TRANSMITTER	
Frequency Stability	±2.5PPM
Output Power	4W
Max Frequency Deviation	≤5KHz/2.5KHz
Audio Distortion	≤3%
Modulation Character	+3dB ~ -3dB
Adjacent Channel Power	≥ 65dB
Spurious Radiation	≤7.5μW
Occupied Bandwidth	≤16KHz

RECEIVER	
RF Sensitivity	<0.2μV
Audio Distortion	≤3%
Audio Response	+2dB ~ -10dB
Adjacent Channel Selectivity	≥60dB
Intermodulation Rejection	≥65dB
Spurious Response	≥60dB
Blocking	≥80dB

www.pxdz.com

STANDARD ACCESSORIES



OPTIONAL ACCESSORIES





PX-888

PROFESSIONAL FM TRANSCEIVER

- Wide (25KHz) and narrow (12.5KHz) compatible
- Come with 1,200mAh Li-ion battery
- Input frequency by using keypad
- VOX built-in
- Scan function
- Three color LCD backlight display
- Emergency alarm
- Programmable by PC
- Bell ring when receiving signal
- Priority scanning function
- Adjust power Hi / Lo
- Switching between channel / frequency
- Adjust squelch level (0 - 9)
- Busy channel lockout
- Keypad lock
- Reverse freq function
- Channel step 5k, 10k, 6.25k, 12.5k, 25k
- Sel Call, Group Call, MDC1200 will be added.

GENERAL	
Frequency Range	VHF: 136~174 / 245~246MHz UHF: 400~470MHz / 465~520MHz
Working Temperature	-20°C ~ +50°C
Operating Voltage	DC 7.2V
Operate Mode	Simplex or Semi-duplex
Dimension	100mm x 55mm x 32mm (Not included Antenna)
Weight	220g (Including battery)
Antenna impedance	50Ω

TRANSMITTER	
Frequency Stability	±2.5PPM
Output Power	VHF 5W / UHF 4W
Max Frequency Deviation	≤5KHz / 2.5KHz
Audio Distortion	≤3%
Modulation Character	+3dB ~ -3dB
Adjacent Channel Power	≥70dB / 60dB
Spurious Radiation	≤7.5μW
Occupied Bandwidth	≤16KHz

RECEIVER	
RF Sensitivity	<0.2μV
Audio Distortion	≤3%
Audio Response	+2dB ~ -10dB
Adjacent Channel Selectivity	≥60dB
Intermodulation Rejection	≥65dB
Spurious Response	≥70dB
Blocking	≥80dB

www.pxdz.com

STANDARD ACCESSORIES



OPTIONAL ACCESSORIES

