

Instructions for Soft66ADH part2

[order page](#)

9, Check before connecting

If assembling is over, please confirm it with a loupe. Is the installation of the part right? Is not there the poor solder? Checking parts places.

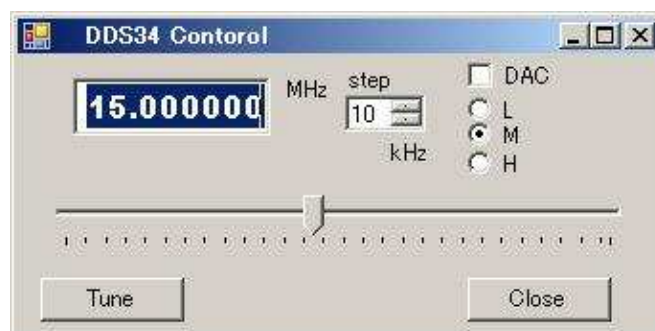
A mini-USB cable needs the connection with the PC. There is the type that GND is not connected to the shield of the crust to a mini-USB cable. It does not work. In addition, there is rarely a 6PIN type, but this does not work, too.

Installation

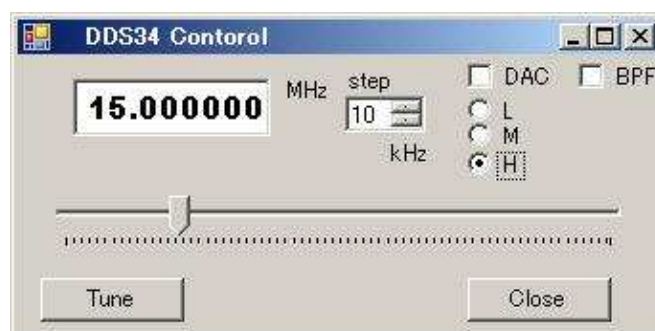
first, installing [FTDI driver](#). next installing [NETFrameWork](#). and download [control soft](#) , install it.

Connecting Soft66ADH and PC with miniUSB cable. also connecting LINE IN of sound card with stereo cable. Antenna to SMA Jack.

Connecting mini USB cable, LED turns on.



Launching control soft. setting radio button to H.



You can tune with 3 way. inputting frequency to form window, and click Tune button.

You can also tune with slide bar. and tuning with mouse wheel.

Checking DAC to output directly from digital converter.

Checking BPF to input antenna signal directly without BPF.

10,Check point