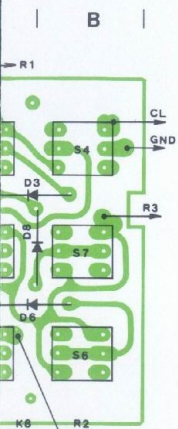
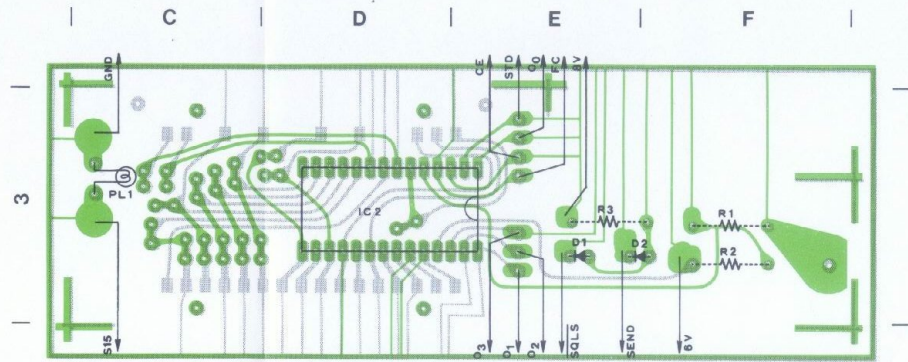


BOARD (1)

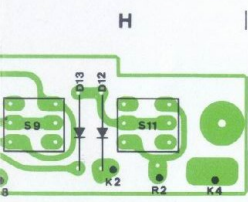


Downloaded by
RadioAmateur.EU

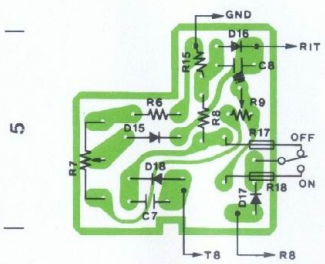
■ DISPLAY BOARD



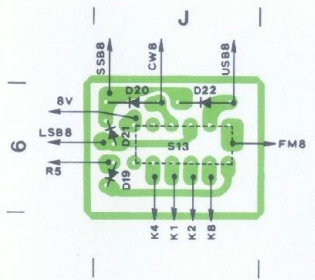
BOARD (2)



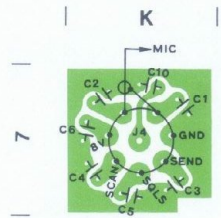
■ RIT BOARD



■ MODE SWITCH BOARD

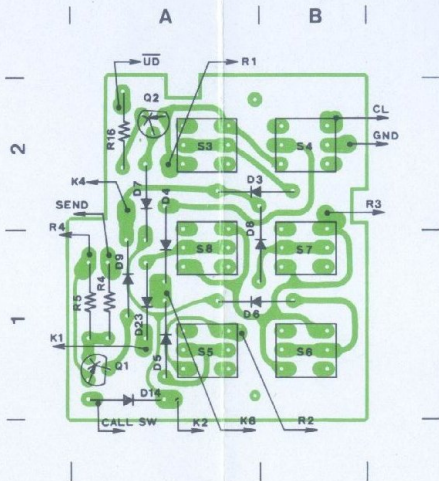


■ MIC BOARD

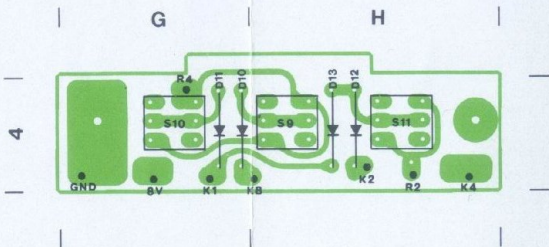


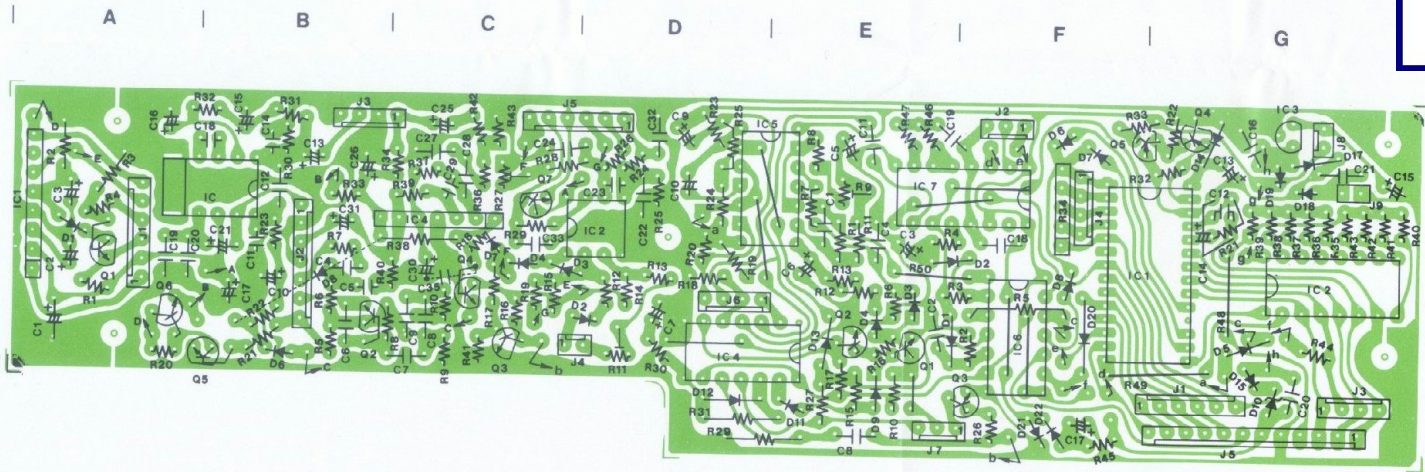
EF UNIT

■ SWITCH BOARD (1)

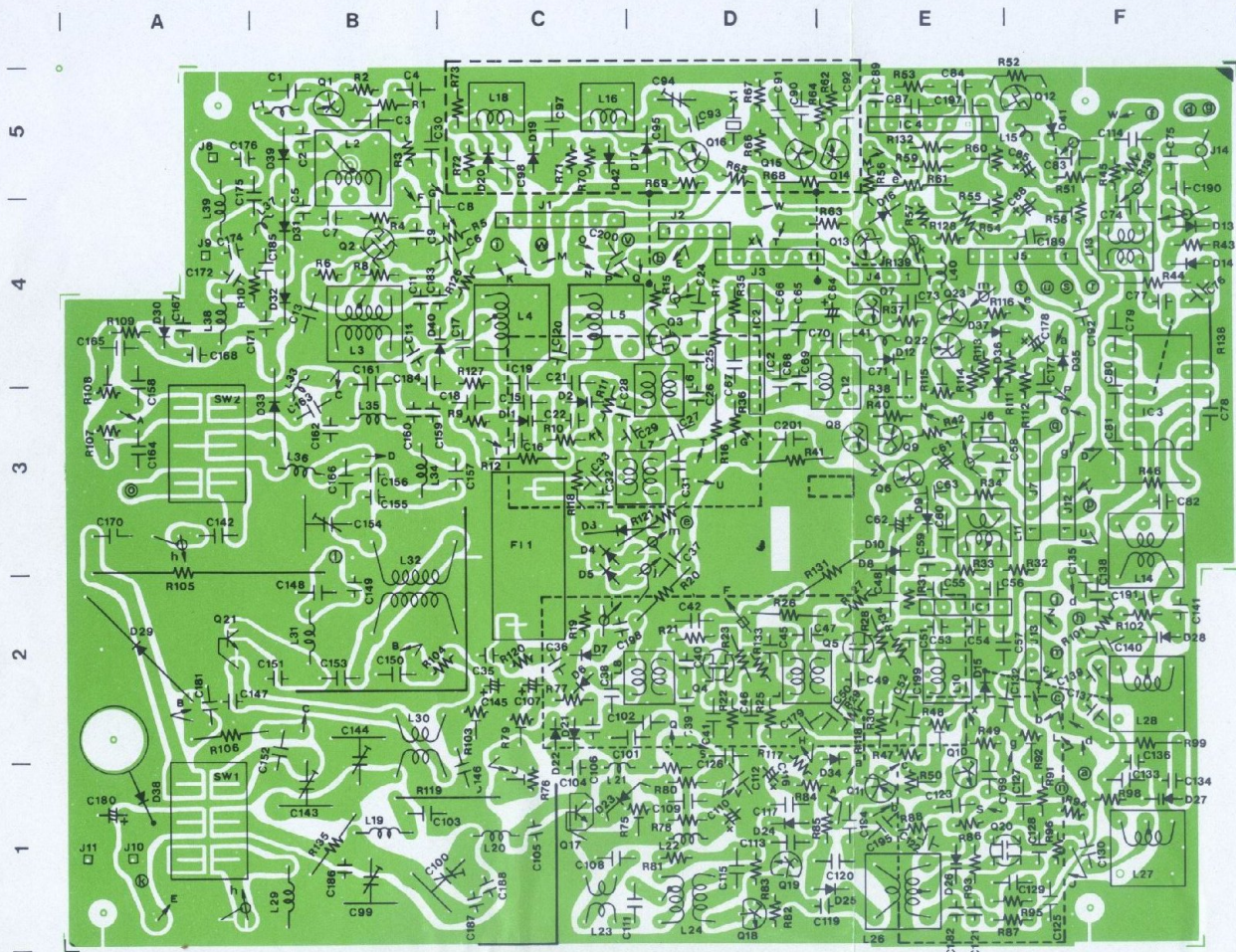


■ SWITCH BOARD (2)

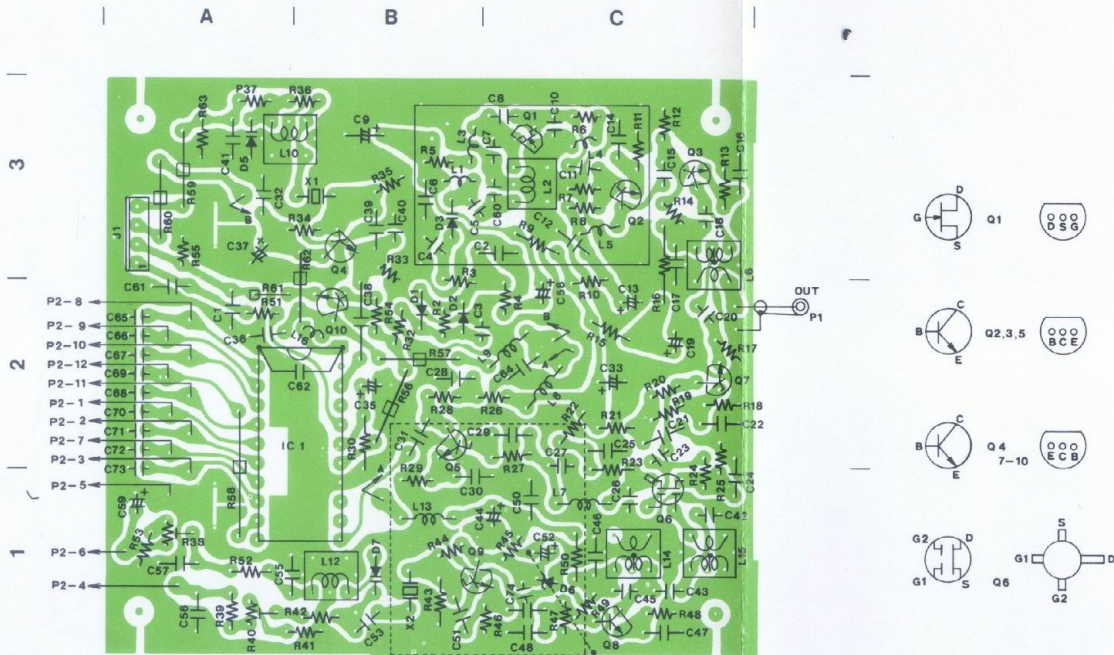




MAIN UNIT

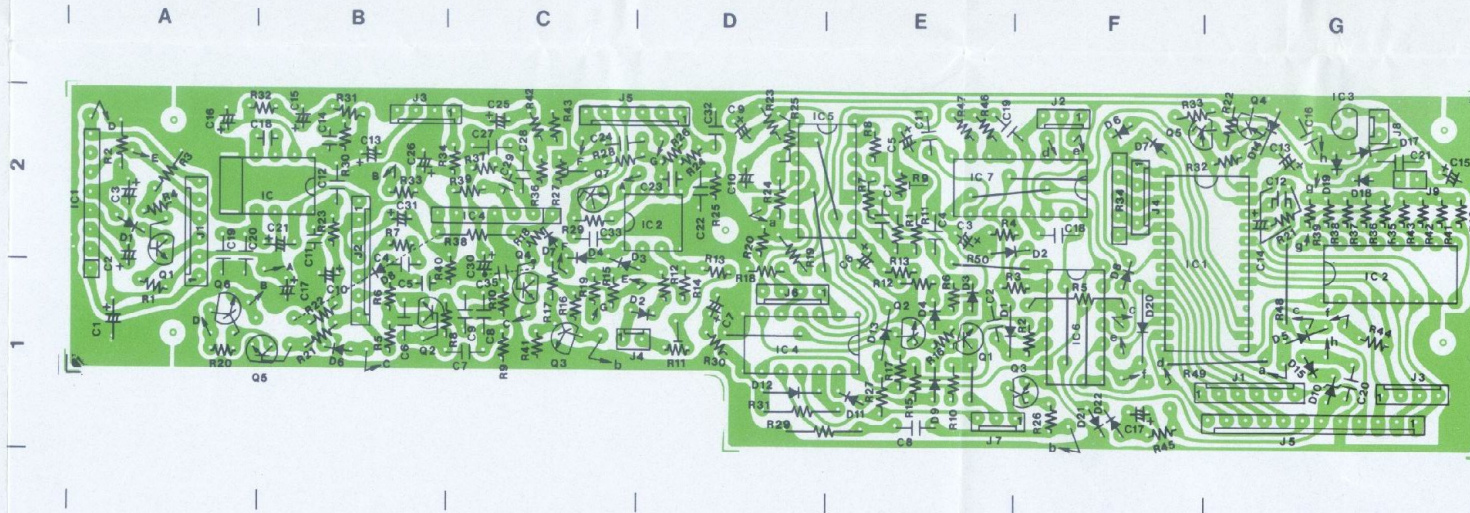


PLL UNIT

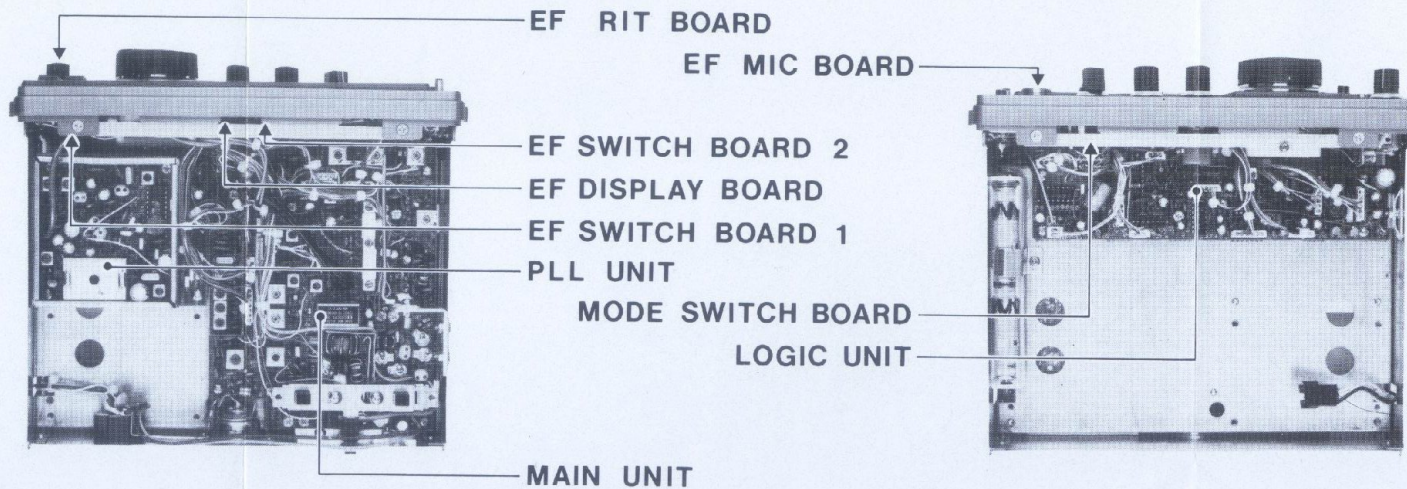


Downloaded by
RadioAmateur.EU

LOGIC UNIT



UNIT LAYOUT



ICOM INCORPORATED

Some components subject to change for an improvement without notice.

Printed in Japan