

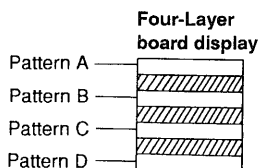
# UNIT BOARDS

TX-RX UNIT·RF (X57-409X-XX) B/4 0-11: K, P 2-71: T, X, E, E2, E3, M, M2

TH-78A/E

Component side

Downloaded by ☐ RadioAmateur.EU

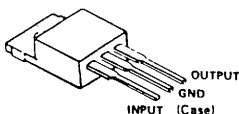


- Patterns A and B are connected.
- ⊙ Patterns A and C are connected.
- Patterns A and D are connected.
- △ Patterns B and C are connected.
- ▲ Patterns B and D are connected.
- Patterns C and D are connected.
- ⊖ Patterns A, B and C are connected.
- ⊕ Patterns A, B and D are connected.
- ⊗ Patterns A, C and D are connected.
- ⊠ Patterns B, C and D are connected.
- ⊡ Patterns A, B, C and D are connected.
- Only pattern A is connected.
- ◇ Only pattern B is connected.
- △ Only pattern C is connected.
- Only pattern D is connected.

The non-mark indicates no connection.

■ A pattern  
■ D pattern

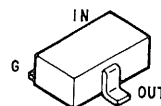
MA110  
MA8039



DTB113ZK  
2SC4215  
2SC4617  
2SC4619

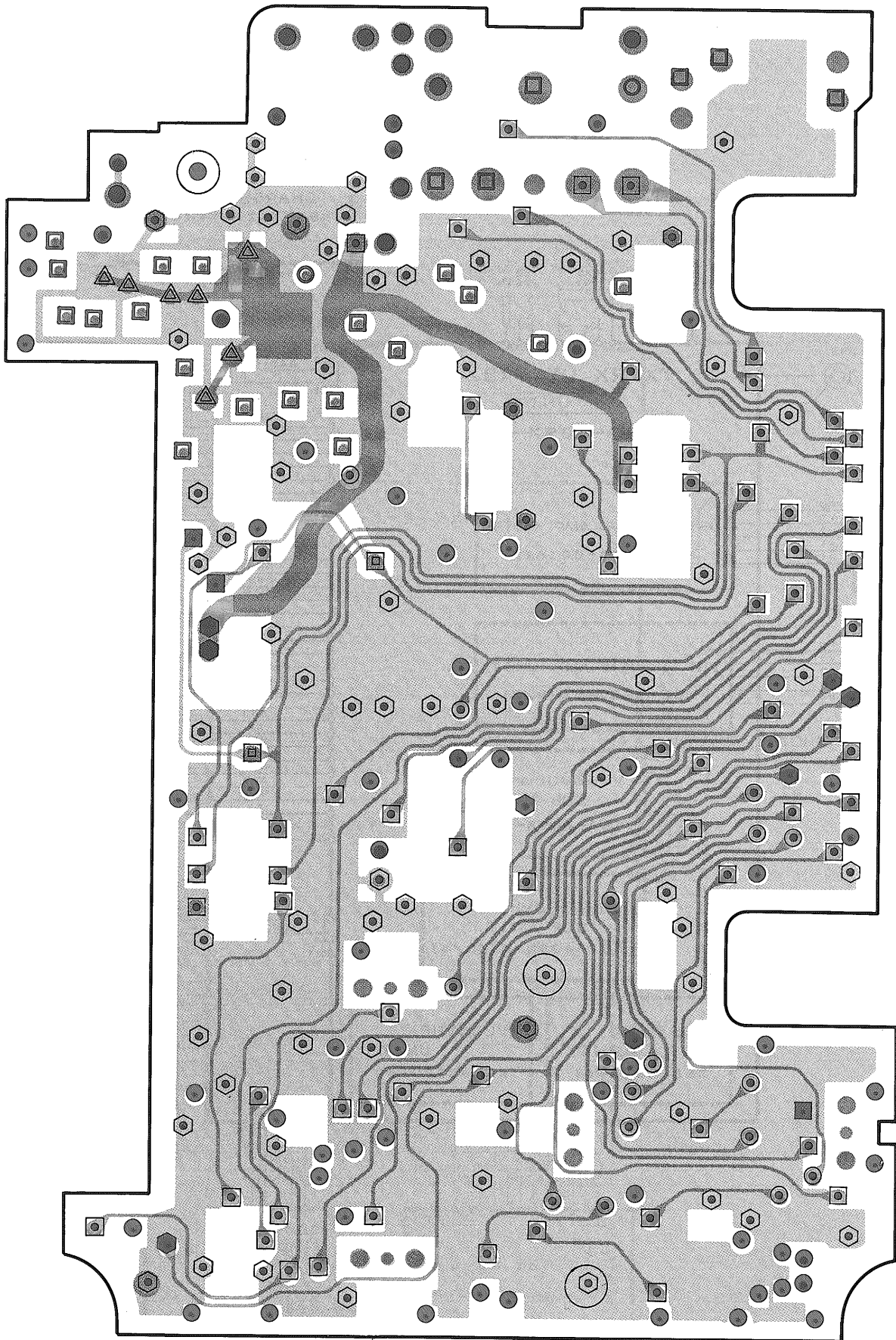


DTA114YE  
DTA144WE  
DTC114EE  
DTC114YE  
DTC144EE



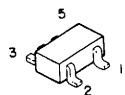


# TH-78A/E

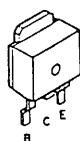


B pattern  
C pattern

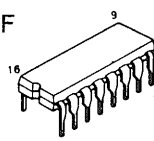
FMA1  
FMC4  
FMW1



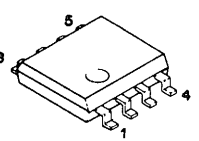
2SB1182F5



TC9174F

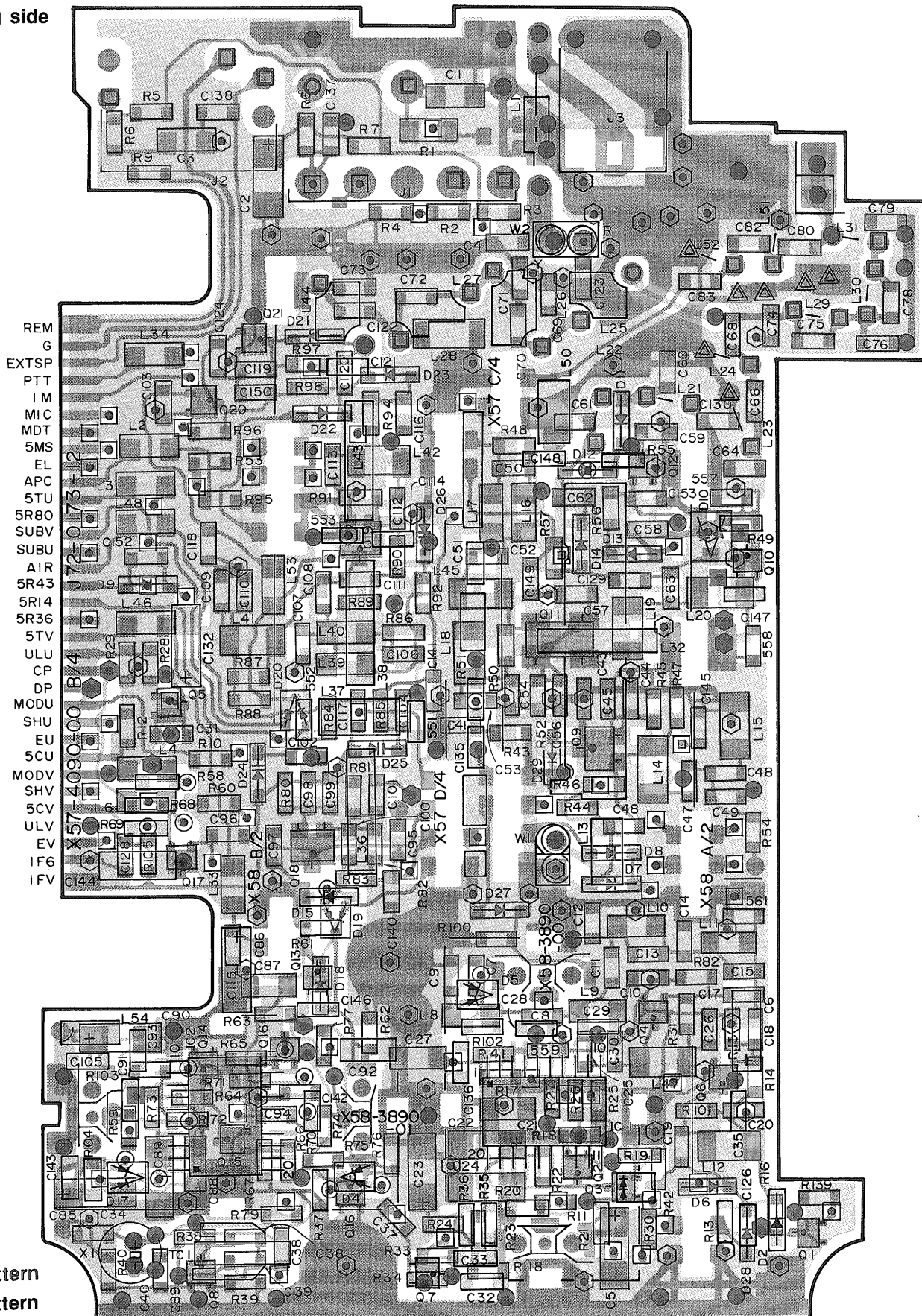


LM301AD  
NJM4560E



TX-RX UNIT·RF (X57-409X-XX) B/4 0-11: K, P 2-71: T, X, E, E2, E3, M, M2

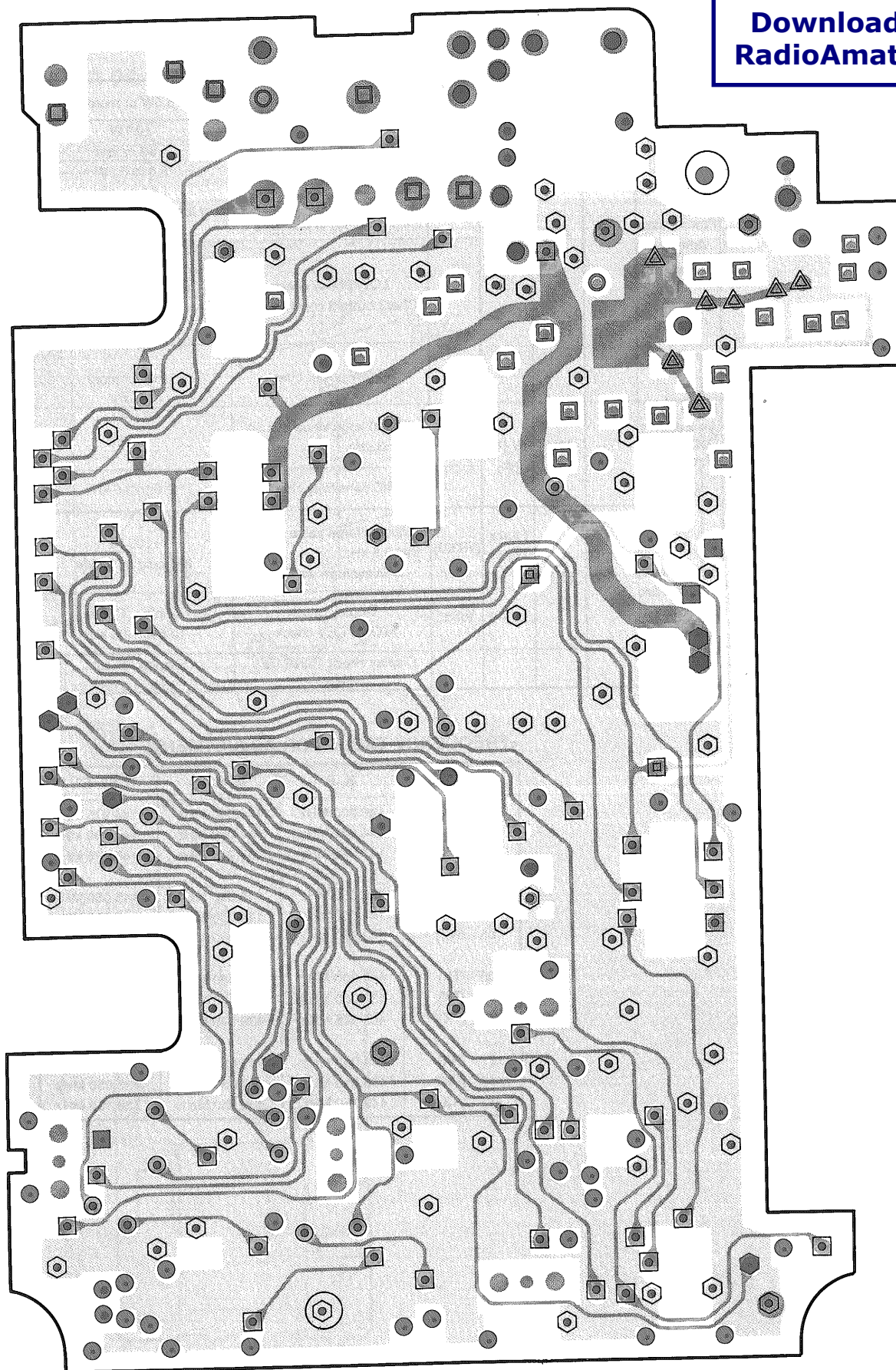
Soldering side





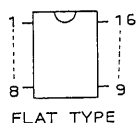
## TH-78A/E

Downloaded by ☐ [RadioAmateur.EU](http://RadioAmateur.EU)

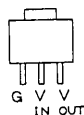


B pattern  
C pattern

MC3372D



S-81250HG-RD



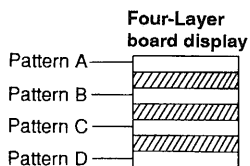


# UNIT BOARDS

TX-RX UNIT-IF (X57-409X-XX) A/4 0-11: K, P 2-71: T, X, E, E2, E3, M, M2

Component side

# TH-78A/E

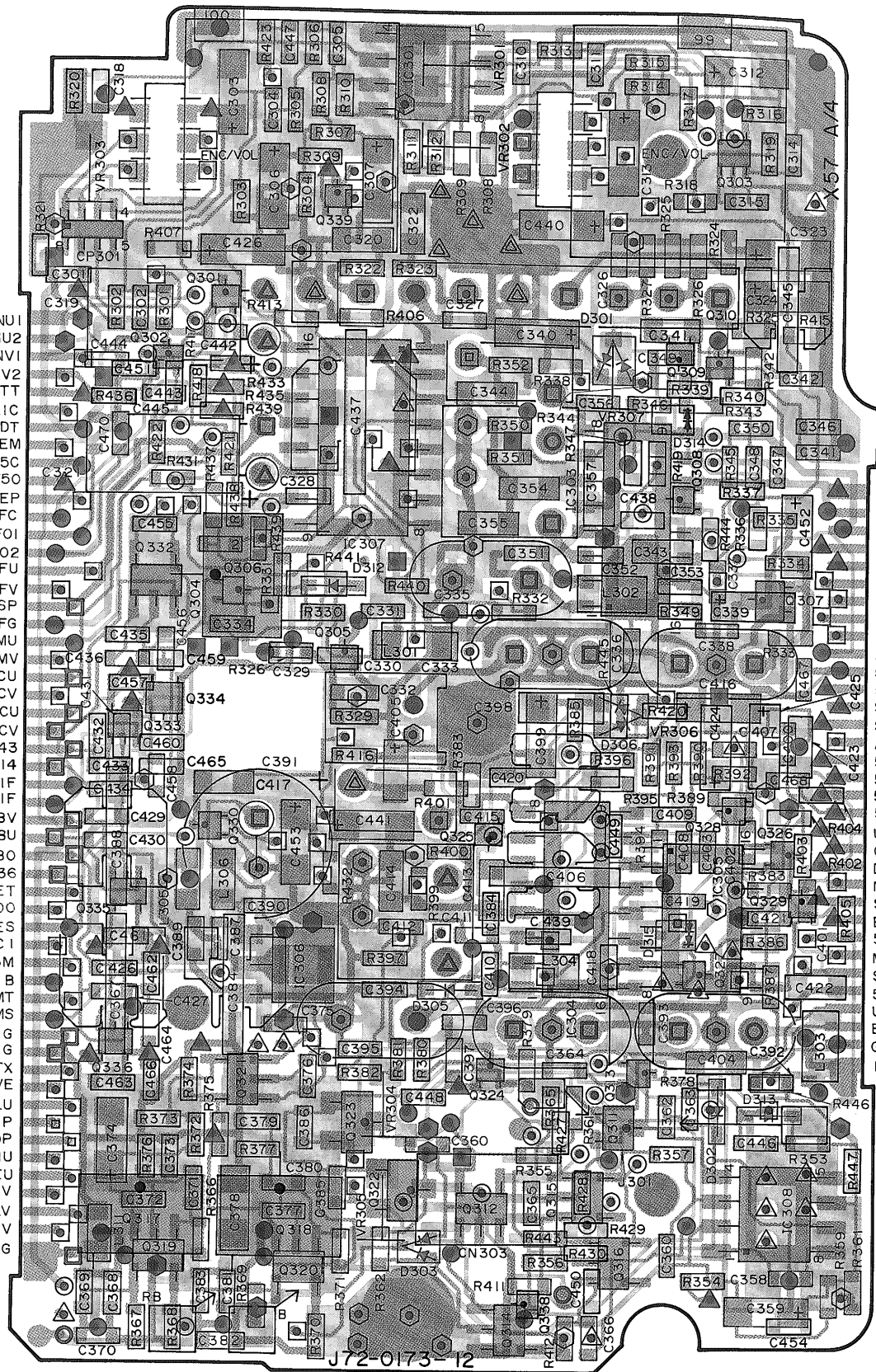


- Patterns A and B are connected.
- Patterns A and C are connected.
- Patterns A and D are connected.
- Patterns B and C are connected.
- Patterns B and D are connected.
- Patterns C and D are connected.
- Patterns A, B and C are connected.
- Patterns A, B and D are connected.
- Patterns A, C and D are connected.
- Patterns B, C and D are connected.
- Patterns A, B, C and D are connected.
- Only pattern A is connected.
- Only pattern B is connected.
- Only pattern C is connected.
- Only pattern D is connected.

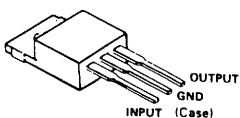
The non-mark indicates no connection.

A pattern  
 D pattern

ENU1  
ENU2  
ENV1  
ENV2  
PTT  
MIC  
MDT  
REM  
5C  
DTMF/1750  
REP  
AFC  
AF01  
AF02  
AFU  
AFV  
SP  
AFG  
SMU  
SMV  
SCU  
SCV  
5CU  
5CV  
5R43  
5R14  
5RUIF  
5RVIF  
SUBV  
SUBU  
5R80  
5R36  
ET  
SDO  
ES  
CI  
5M  
B  
5MT  
5MS  
G  
G  
TX  
SAVE  
ULU  
CP  
DP  
SHU  
EU  
SHV  
ULV  
EV  
G



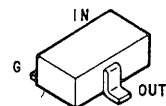
MA110  
MA360  
MA77



2SC4083  
2SC4617  
2SA1832  
2SC4726  
2SC4738  
2SC4839-J  
2SC4226



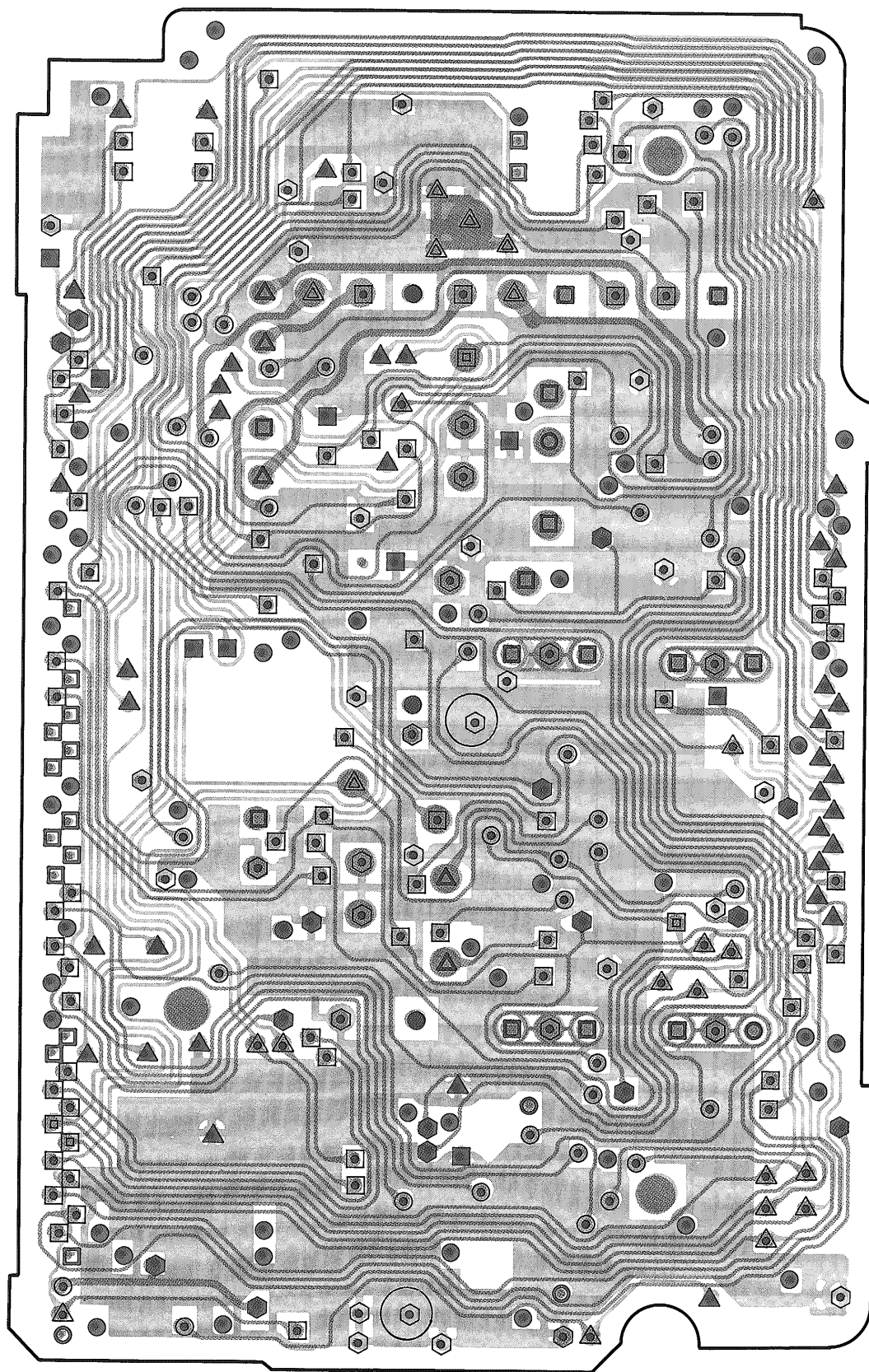
DTC114YE







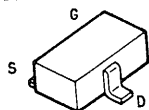
TH

## TH-78A/E

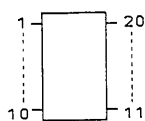


 B patter  
 C patter

2SK1824



MB1511PFV-G-BND

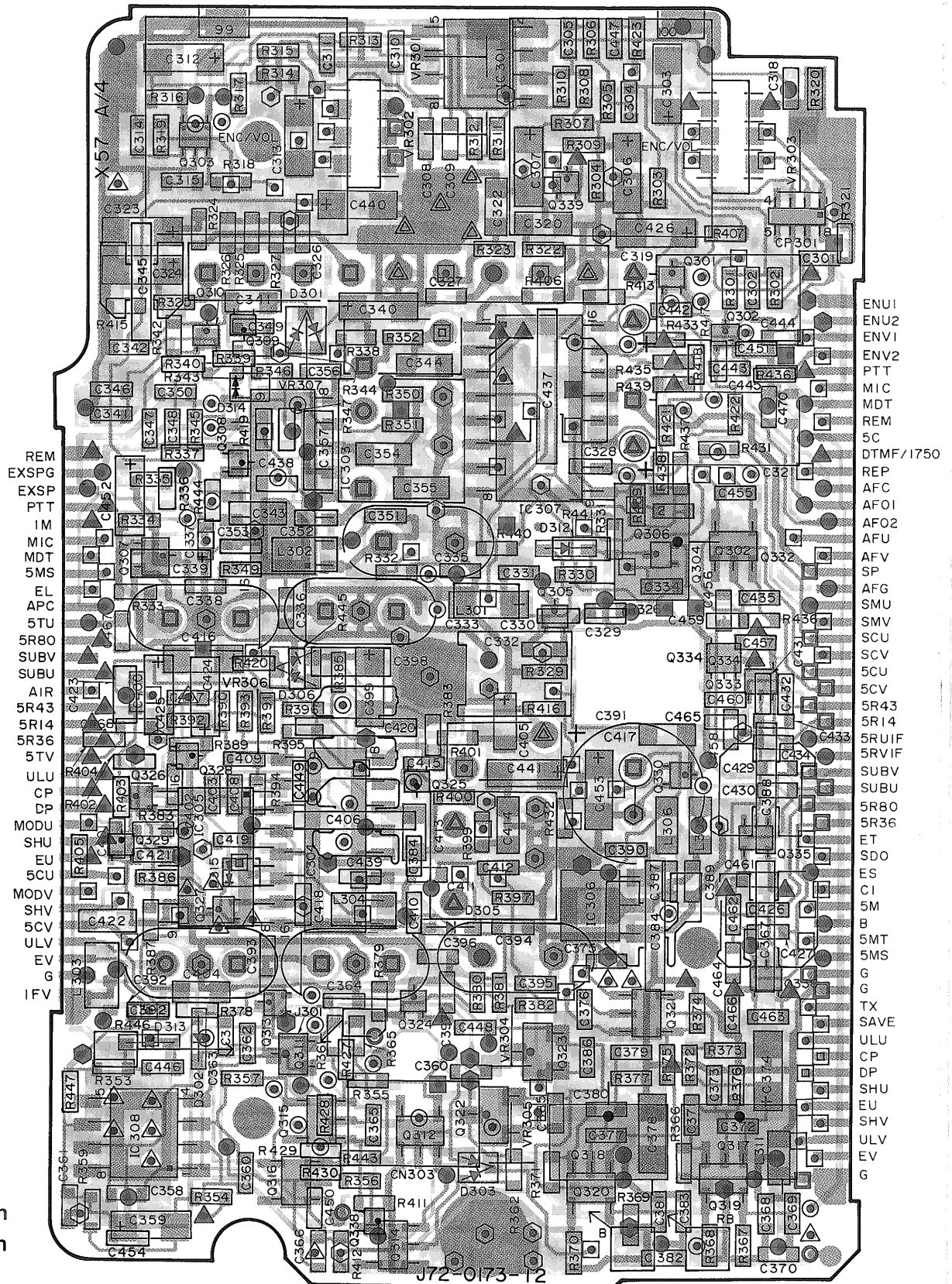




## TH-78A/E

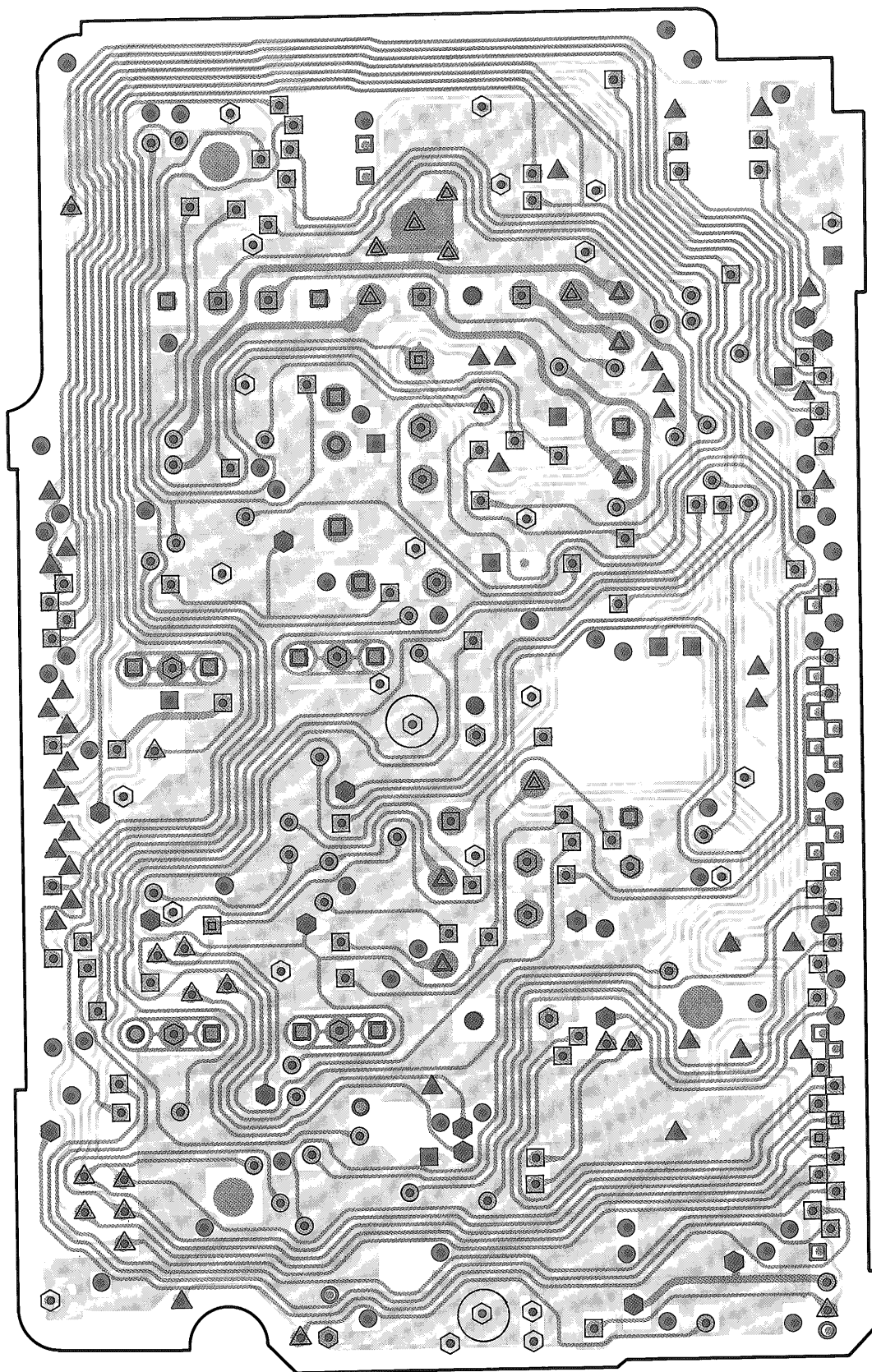
TX RX UNIT-IF (X57-409X-XX) A/4 0-11: K, P 2-71: T, X, E, E2, E3, M, M2

Soldering side





## TH-78A/E



▨ B pattern  
■ C pattern



# UNIT BOARDS

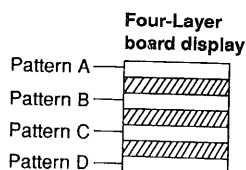
CONTROL UNIT (X53-342X-XX) A/5

0-11: K, P 0-21: M 0-22: M2 0-71: X

2-71: T, E, E3 2-72: E2

TH-78A/E

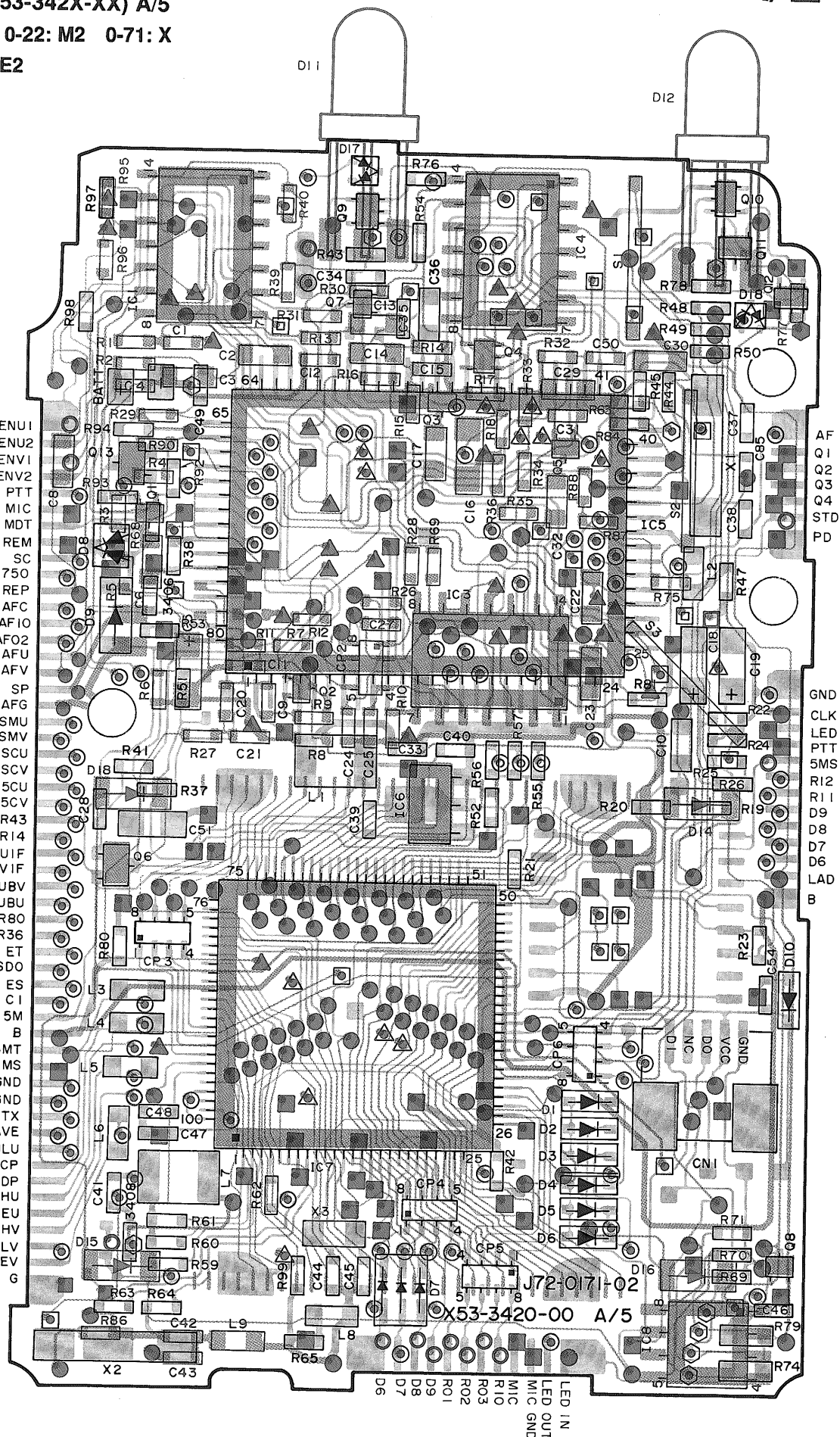
Component side

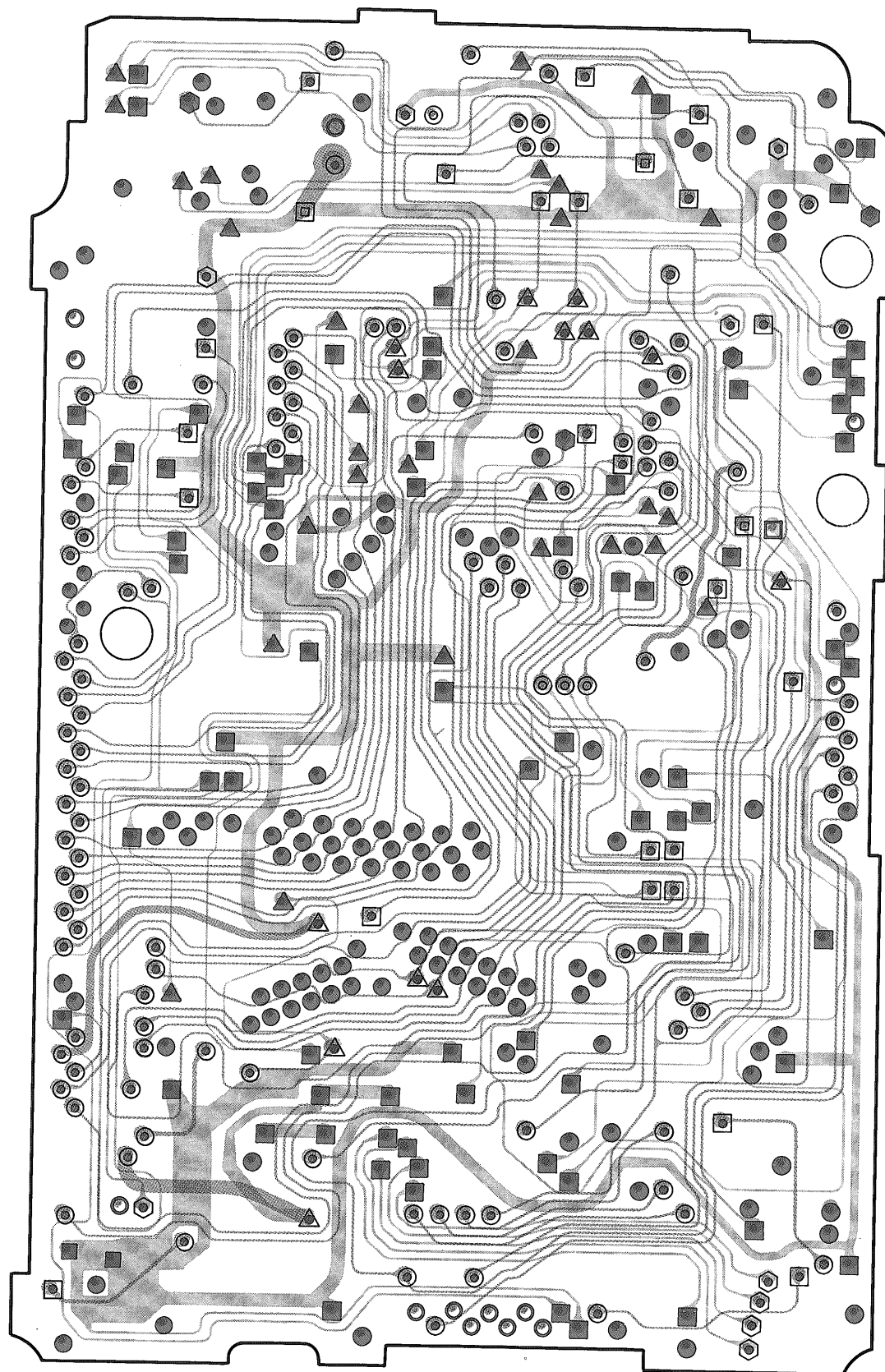


- Patterns A and B are connected.
  - ▽ Patterns A and C are connected.
  - Patterns A and D are connected.
  - Patterns B and C are connected.
  - ▽ Patterns B and D are connected.
  - Patterns C and D are connected.
  - ◆ Patterns A, B and C are connected.
  - ⊙ Patterns A, B and D are connected.
  - ⊙ Patterns A, C and D are connected.
  - ⊙ Patterns B, C and D are connected.
  - ▽ Patterns A, B, C and D are connected.
  - ▽ Only pattern A is connected.
  - Only pattern B is connected.
  - ⊙ Only pattern C is connected.
  - Only pattern D is connected.
- The non-mark indicates no connection.

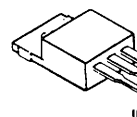
**A pattern**  
**D pattern**

ENU1  
ENU2  
ENV1  
ENV2  
PTT  
MIC  
MDT  
REM  
SC  
DM/1750  
REP  
AFC  
AFIO  
AFO2  
AFU  
AFV  
SP  
AFG  
SMU  
SMV  
SCU  
SCV  
5CU  
5CV  
SR43  
SR14  
5RUIF  
5RVIF  
SUBV  
SUBU  
5R80  
5R36  
ET  
SDO  
ES  
CI  
5M  
B  
5MT  
5MS  
GND  
GND  
TX  
SAVE  
ULU  
CP  
DP  
SHU  
EU  
SHV  
ULV  
EV  
G





B30-0897-C  
B30-2033-C  
B30-2039-C  
MA110



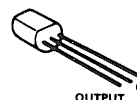
DTA143XE  
2SC4617



2SJ144

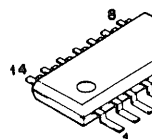


S-8054ALR-

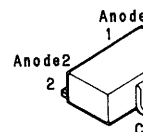




OUTPUT

BU4066BF



MA741WK



 B pattern  
 C pattern



# UNIT BOARDS

## CONTROL UNIT (X53-342X-XX) A/5

0-11: K, P 0-21: M

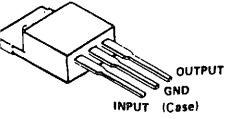
0-22: M2 0-71: X

2-71: T, E, E3 2-72: E2

# TH-78A/E

Soldering side

B30-0897-05  
B30-2033-05  
B30-2039-05  
MA1110



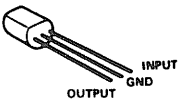
DTA143XE  
2SC4617



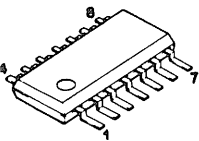
2SJ144



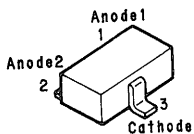
3-8054ALR-LN



BU4066BF

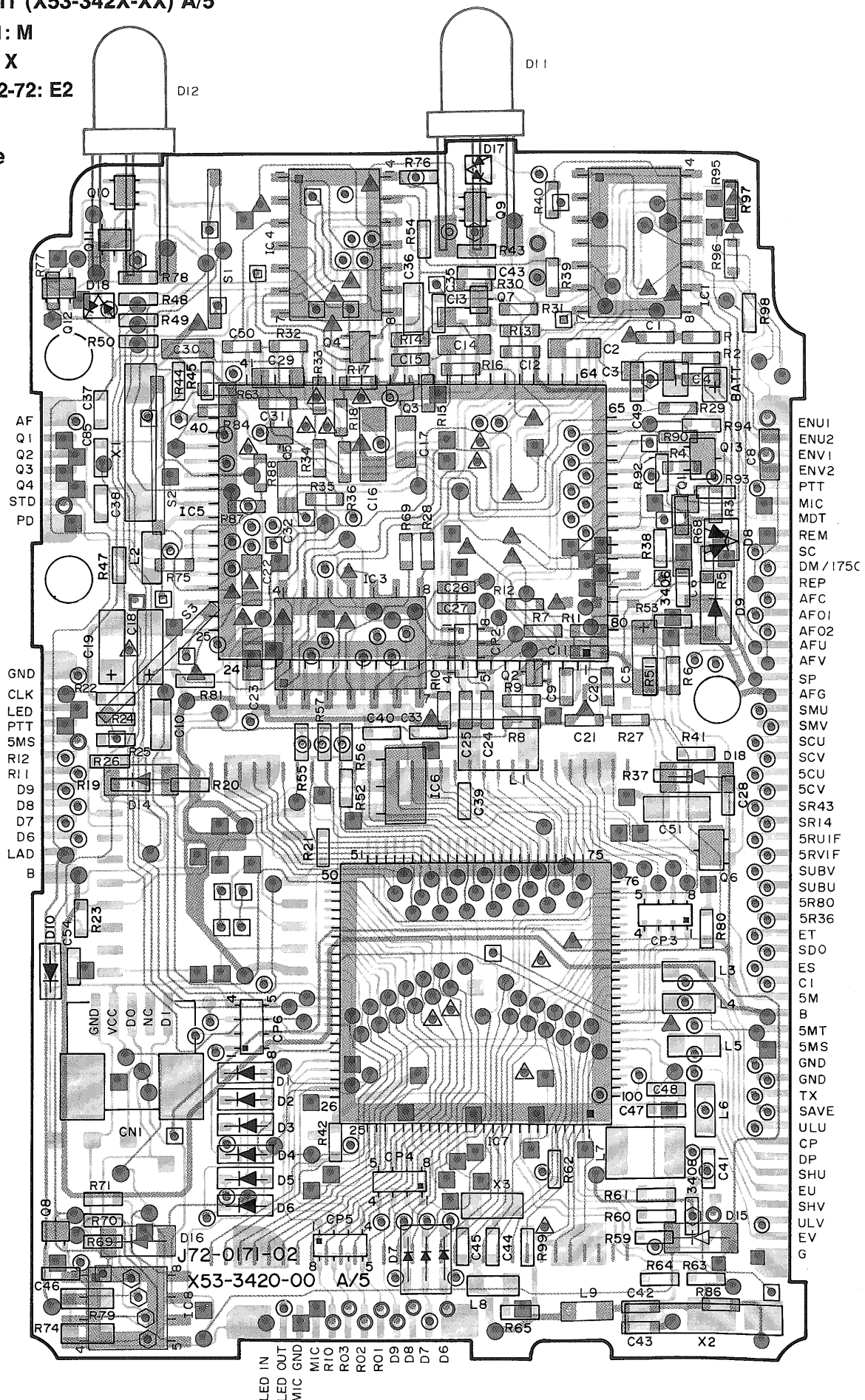


MA741WK

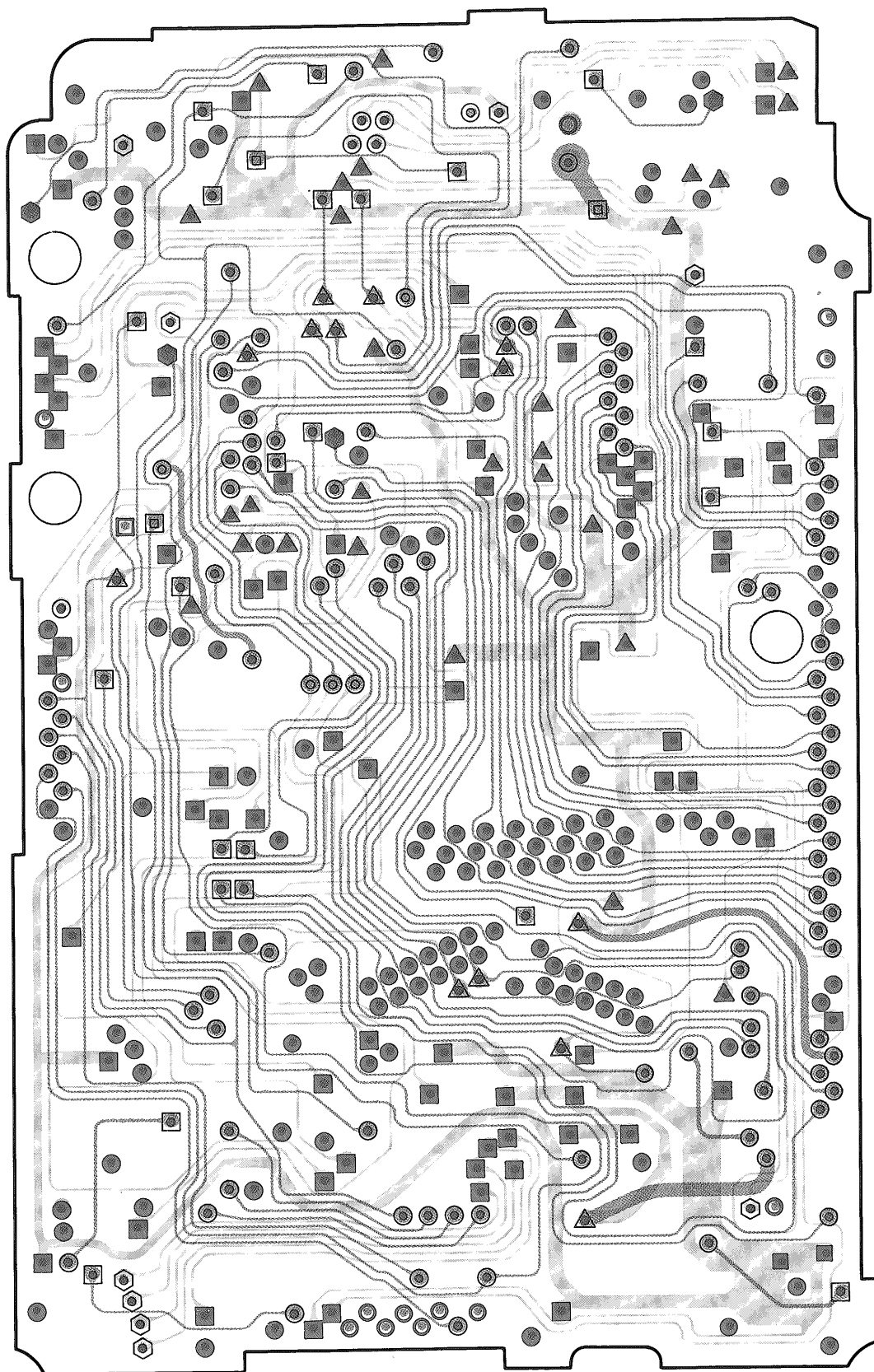


B pattern  
C pattern

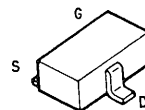
A pattern  
D pattern



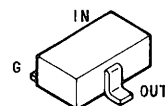
# TH-78A/E



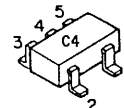
2SK1824



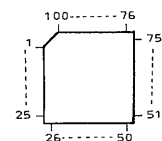
DTC114EE



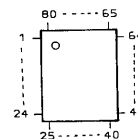
UMC4



HD404629A20H



75517GF-122-3B9



DS1267S-10

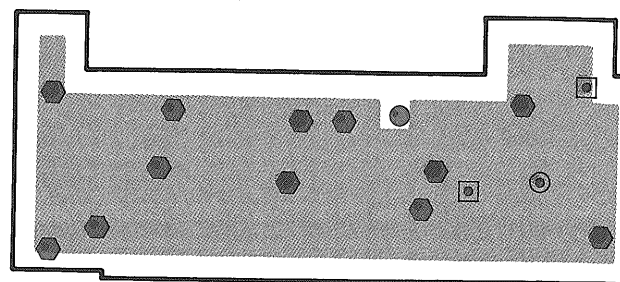



B pattern  
C pattern





## TX-RX UNIT (X57-409X-XX) C/4


Downloaded by   
RadioAmateur.EU



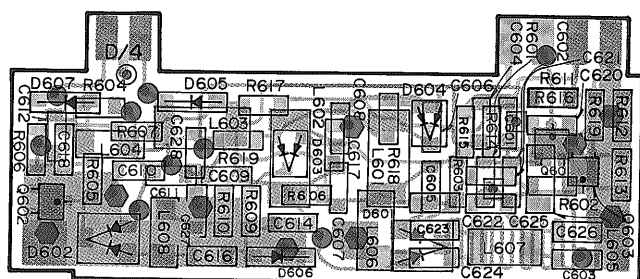
 **B pattern**


 **C pattern**


 **B pattern**


 **C pattern**


### Component side



 **B pattern**

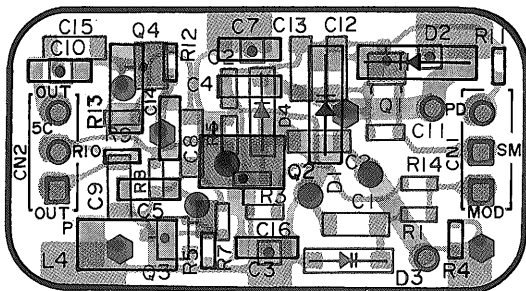
 **C pattern**

 **B pattern**

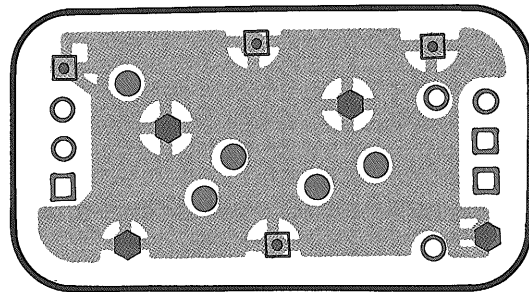
 **C pattern**

## SUB UNIT (VHF VCO) (X58-3890-00)

## Component side

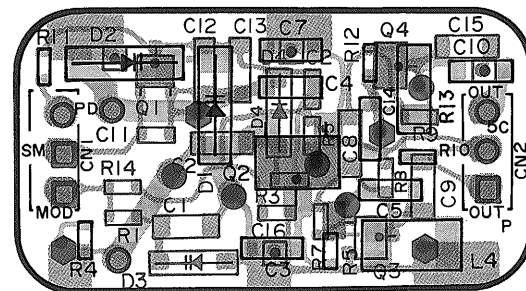


A pattern  
D pattern

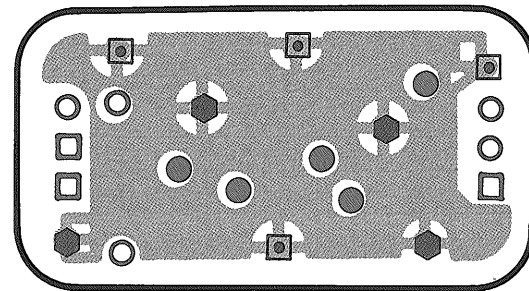


C pattern

## Soldering side



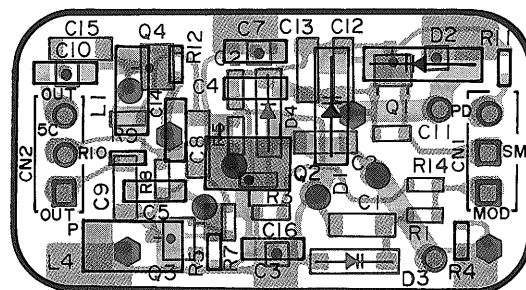
A pattern  
D pattern



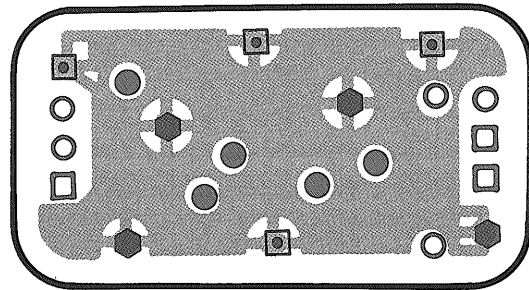
C pattern

## SUB UNIT (UHF VCO) (X58-3890-01)

## Component side

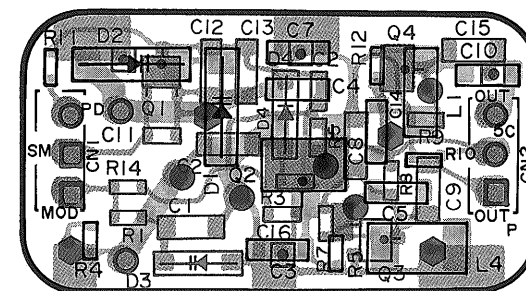


A pattern  
D pattern

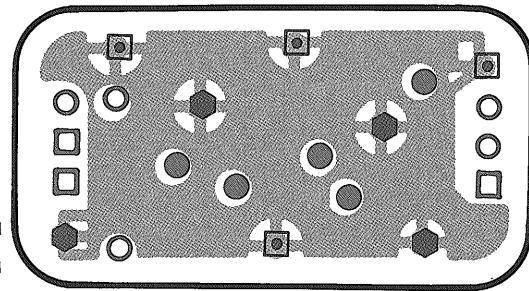


C pattern

## Soldering side

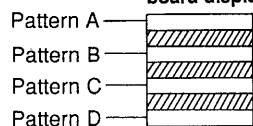


B pattern  
C pattern



C pattern

## Four-Layer board display



- Patterns A and B are connected.
- ⊙ Patterns A and C are connected.
- Patterns A and D are connected.
- △ Patterns B and C are connected.
- ▲ Patterns B and D are connected.
- Patterns C and D are connected.
- ⊙ Patterns A, B and C are connected.
- ⊙ Patterns A, B and D are connected.

- ◆ Patterns A, C and D are connected.
- ⊙ Patterns B, C and D are connected.
- △ Patterns A, B, C and D are connected.
- Only pattern A is connected.
- Only pattern B is connected.
- △ Only pattern C is connected.
- Only pattern D is connected.

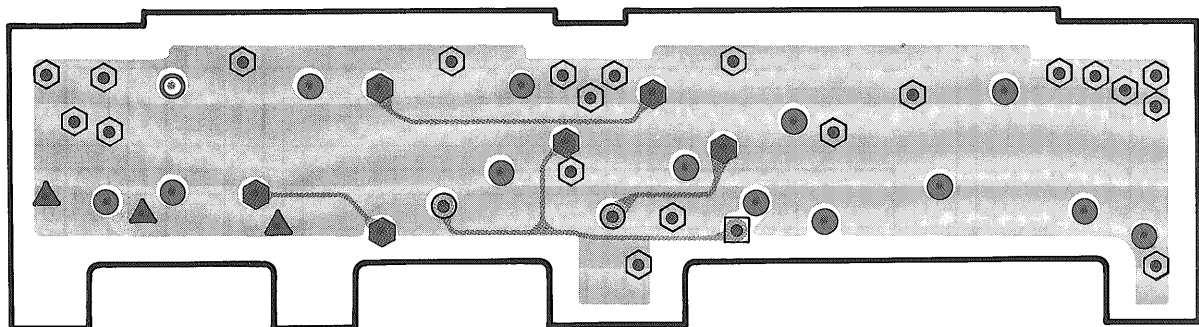
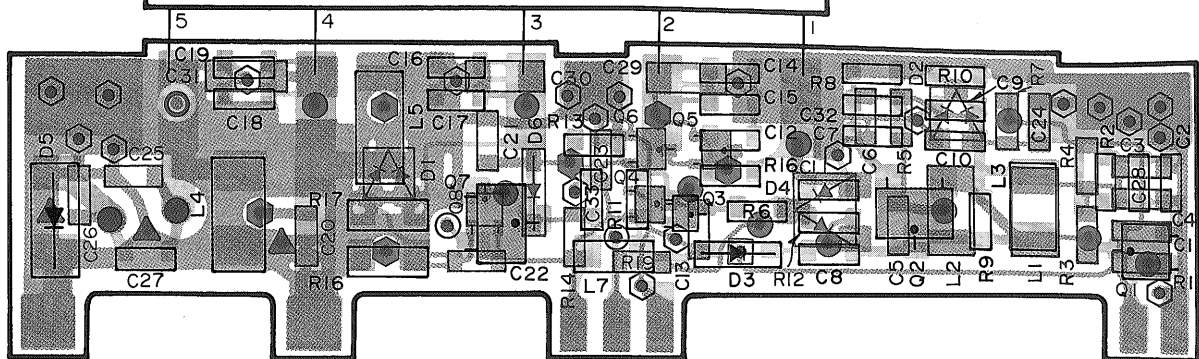
The non-mark indicates no connection.



# SUB UNIT (UHF POWER AMP) (X58-3900-00) A/2

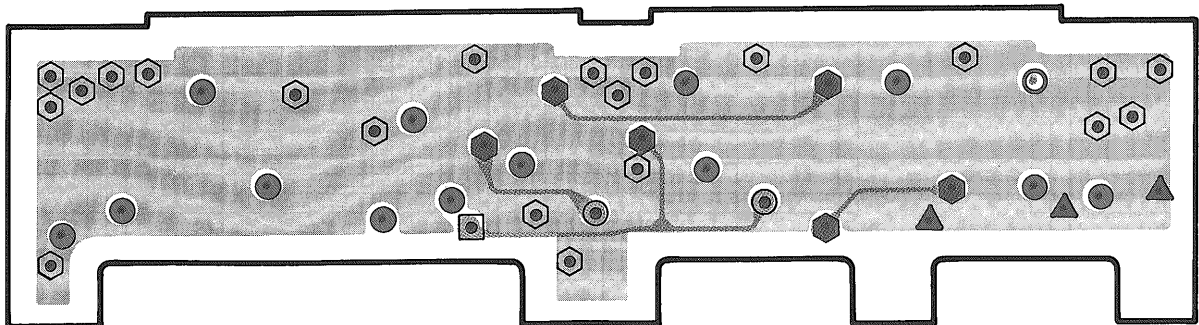
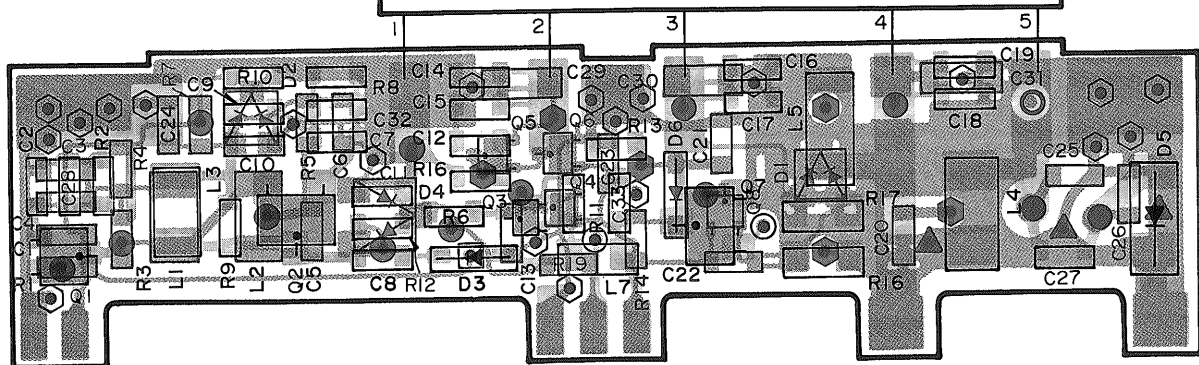
Component side

UHF POWER MODULE

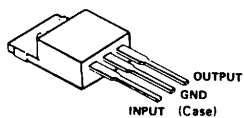


Soldering side

UHF POWER MODULE



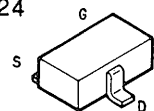
MA333  
MA360  
MA77  
MA110  
1SV172



DTB113ZK  
2SC3356  
2SC4083  
DTA143XE  
2SC4226  
2SC4619  
2SC4726  
2SC4738

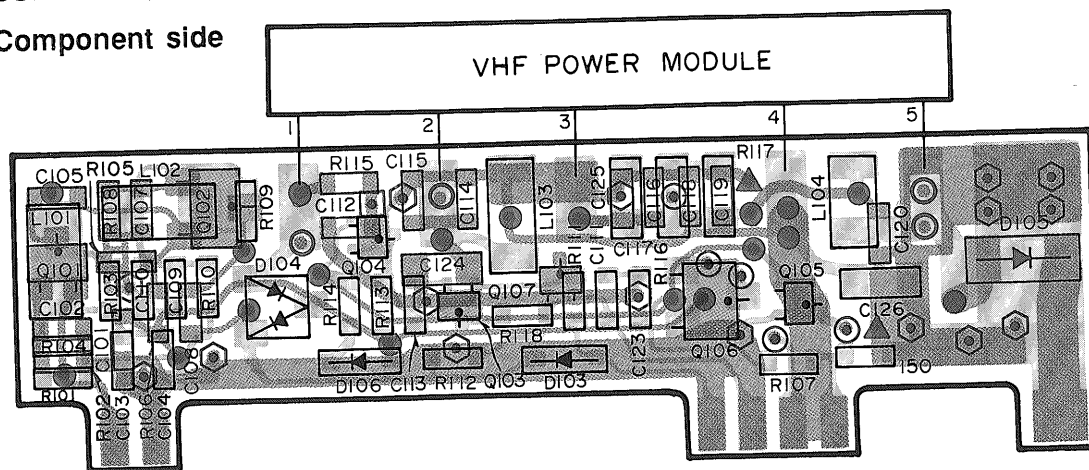


2SK1824

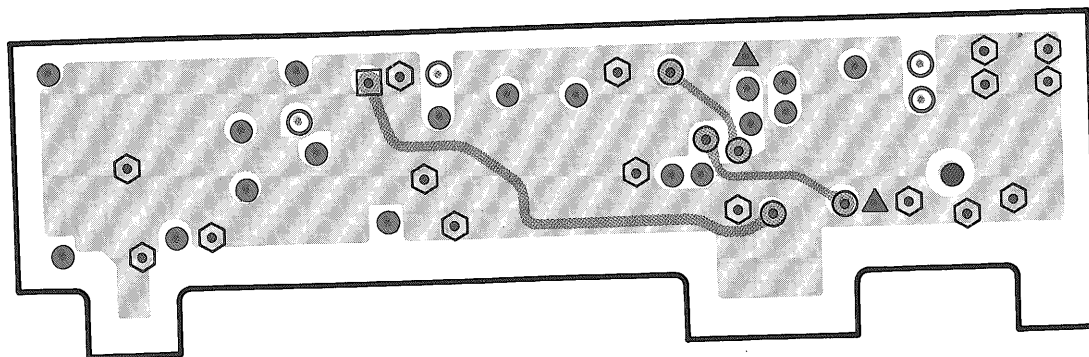


# SUB UNIT (VHF POWER AMP) (X58-3900-00) B/2

Component side

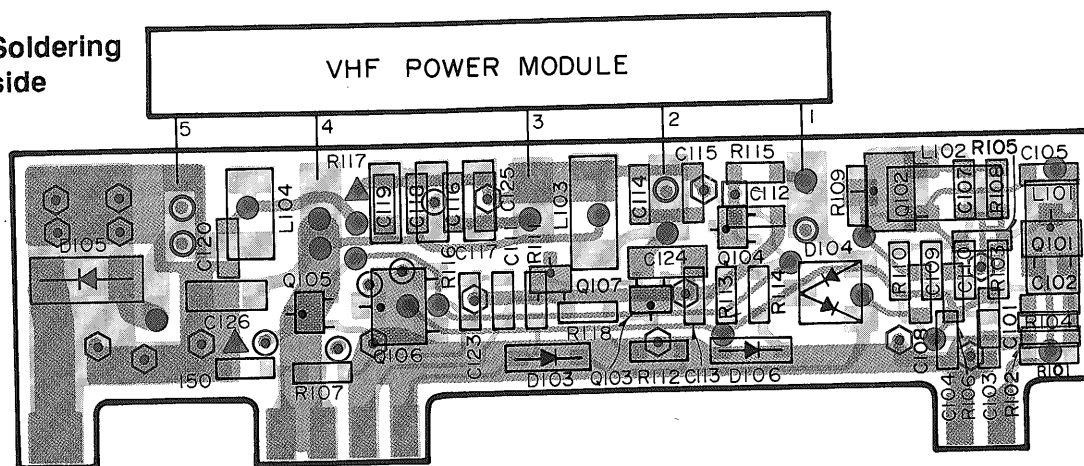


A pattern  
D pattern

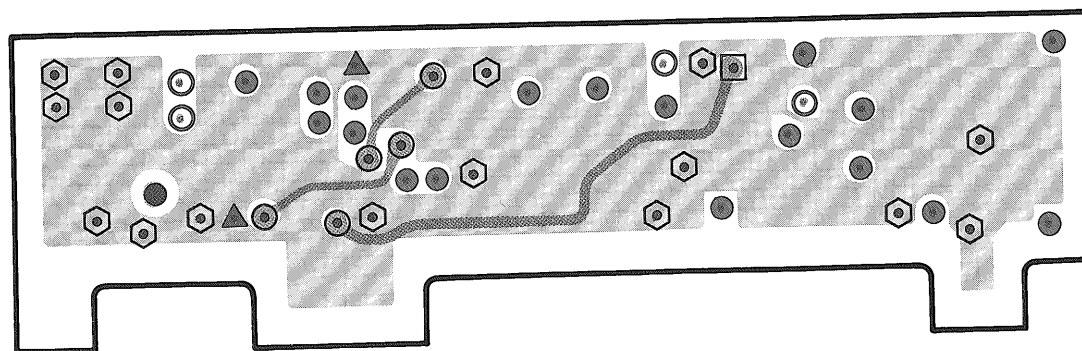


B pattern  
C pattern

Soldering side

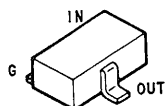


A pattern  
D pattern

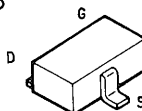


B pattern  
C pattern

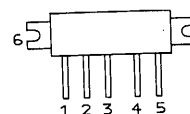
DTC114YE



2SK238



S-AV22A



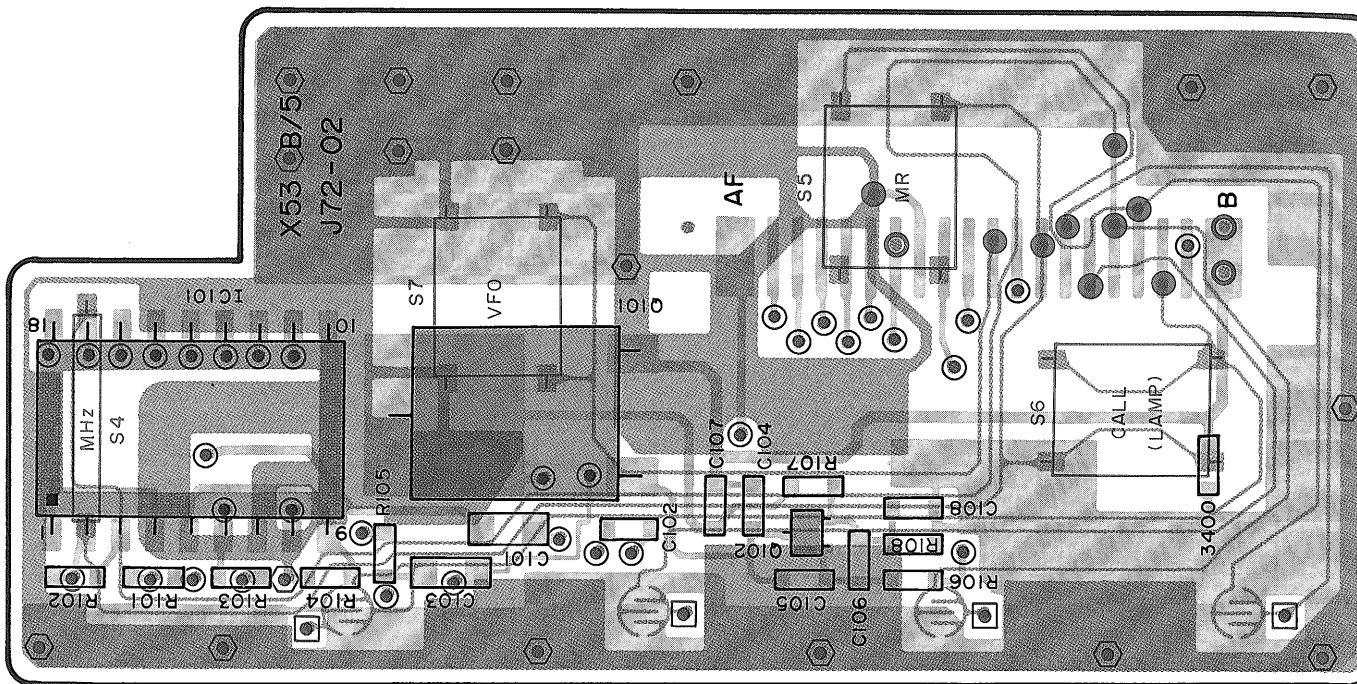


# UNIT BOARDS

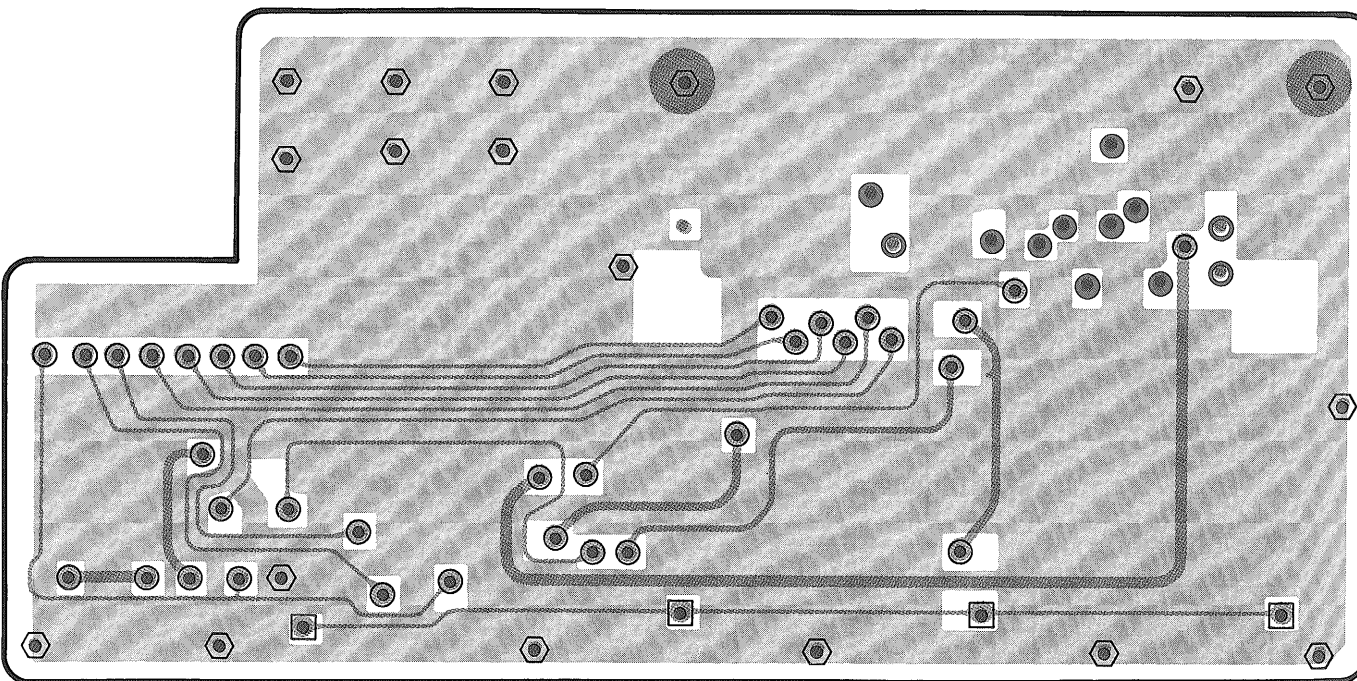
CONTROL UNIT (X53-342X-XX) B/5

Component side

Downloaded by ☐ RadioAmateur.EU



A pattern  
D pattern



Four-layer board display

Pattern A  
Pattern B  
Pattern C  
Pattern D

- Patterns A and B are connected.
- ⊙ Patterns A and C are connected.
- Patterns A and D are connected.
- △ Patterns B and C are connected.
- ▲ Patterns B and D are connected.
- Patterns C and D are connected.
- ⊖ Patterns A, B and C are connected.
- ⊕ Patterns A, B and D are connected.

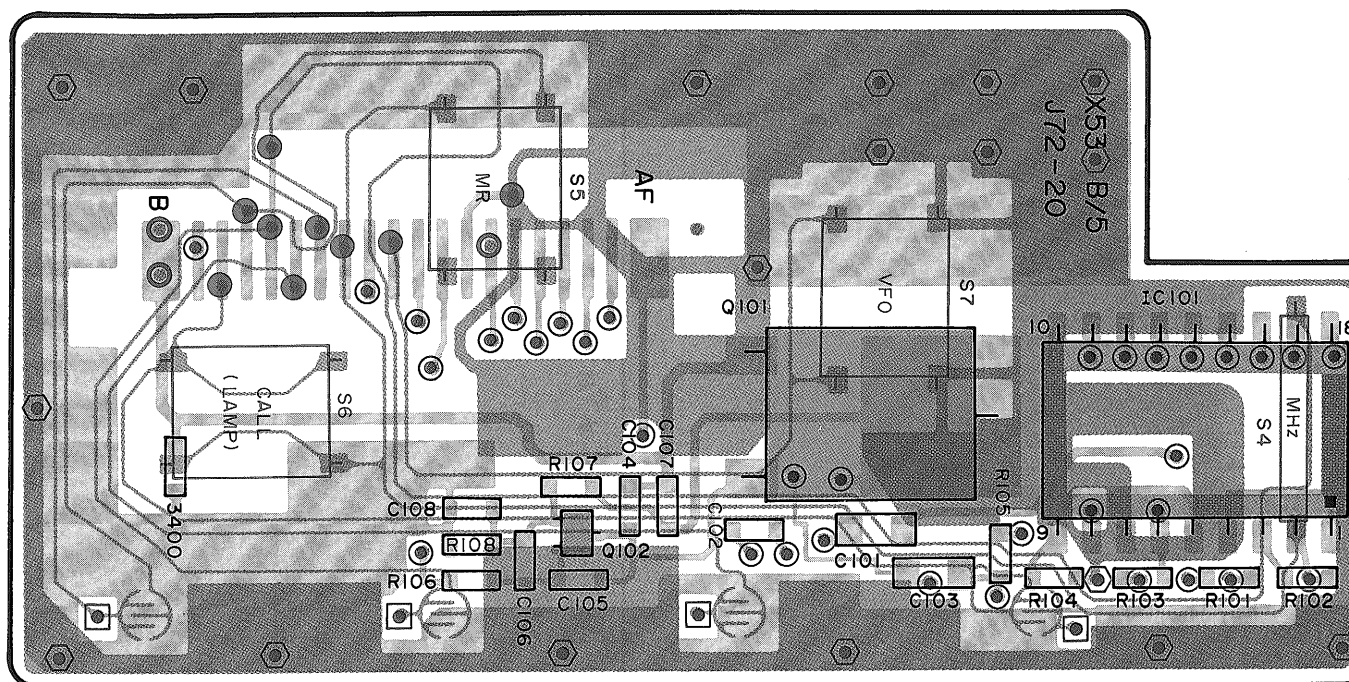
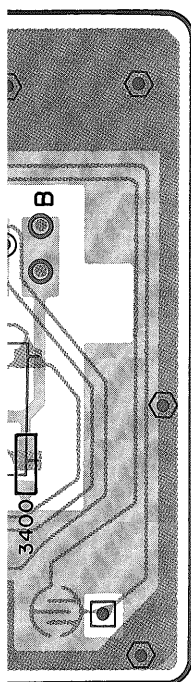
- ◆ Patterns A, C and D are connected.
- ⊖ Patterns B, C and D are connected.
- △ Patterns A, B, C and D are connected.
- Only pattern A is connected.
- Only pattern B is connected.
- △ Only pattern C is connected.
- Only pattern D is connected.

The non-mark indicates no connection.

B pattern  
C pattern

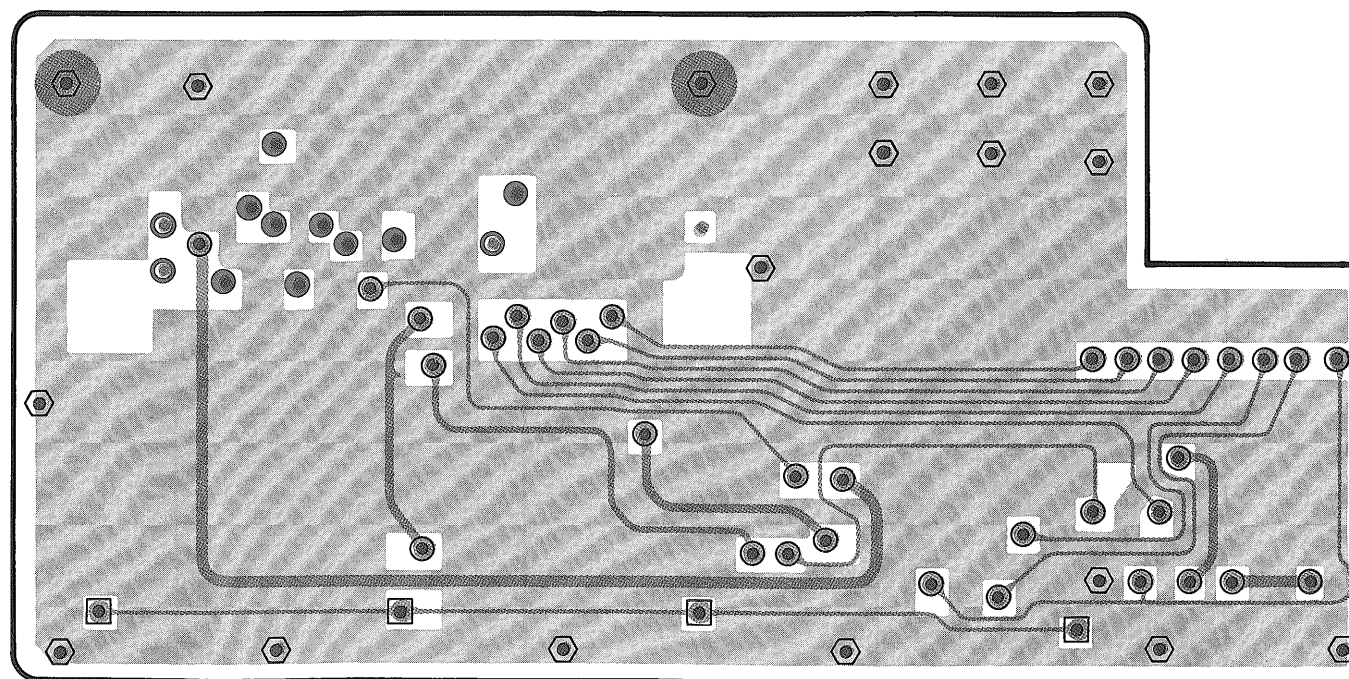
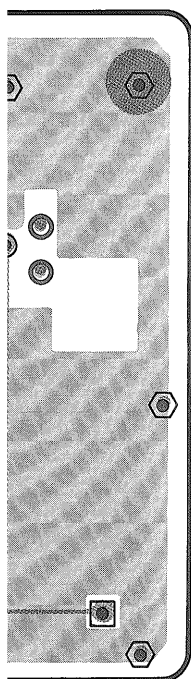


## Soldering side



A pattern  
D pattern

A patter  
D patter



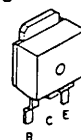
B pattern  
C pattern

B patte  
C patte

2SC4617



2SB1182F5

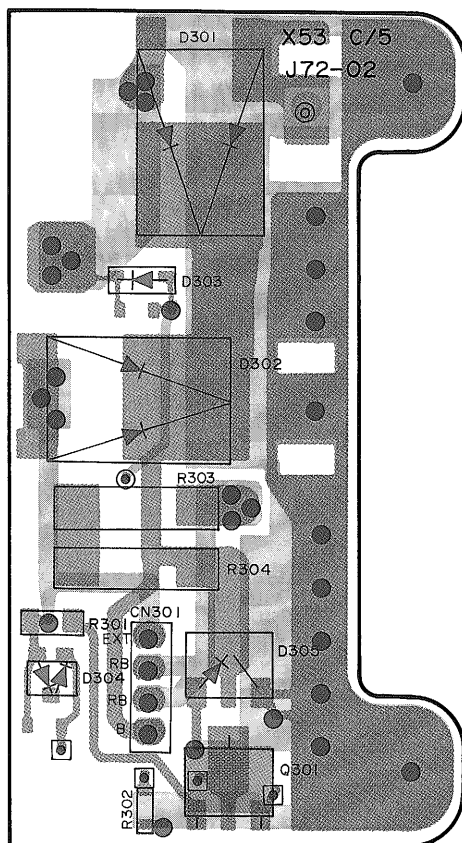




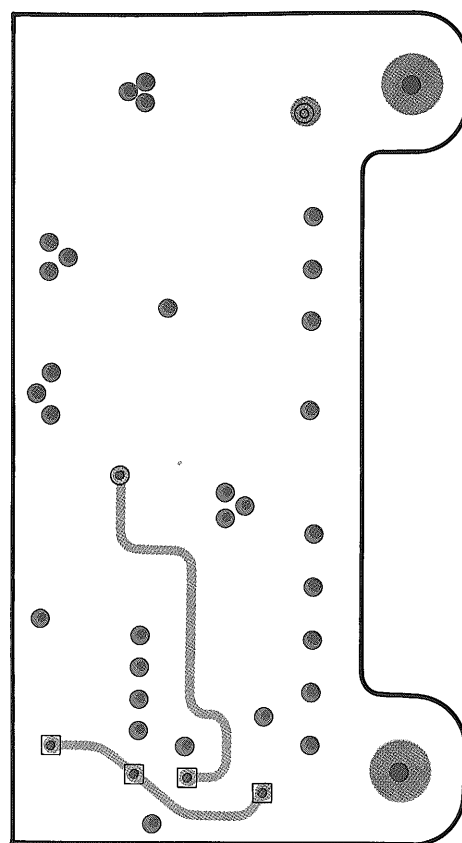
# UNIT BOARDS

## CONTROL UNIT (X53-342X-XX) C/5

### Component side

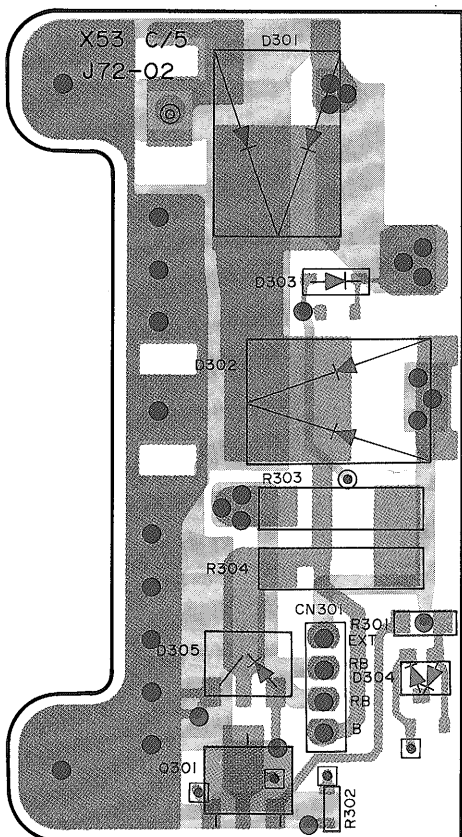


A pattern  
B pattern  
C pattern  
D pattern

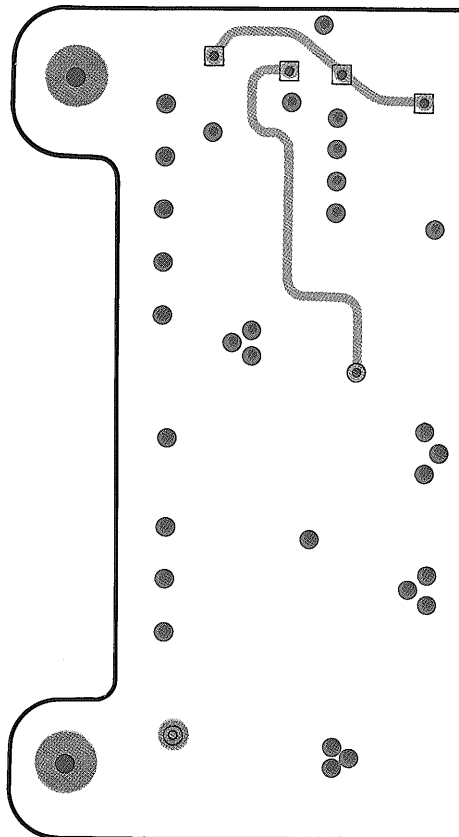


B pattern  
C pattern

### Soldering side



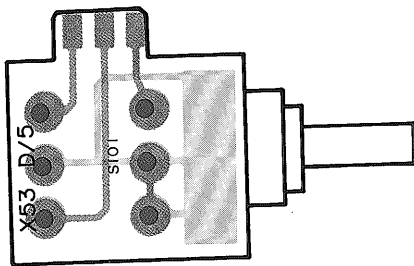
A pattern  
B pattern  
C pattern  
D pattern



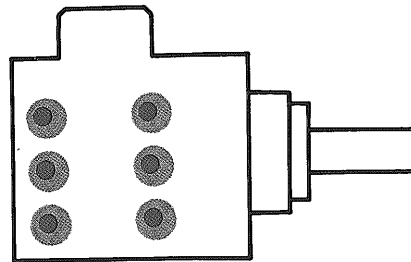
B pattern  
C pattern

# CONTROL UNIT (X53-342X-XX) C/5

## Component side

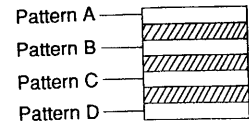


A pattern  
D pattern



B pattern  
C pattern

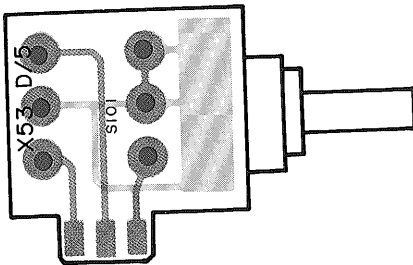
## Four-Layer board display



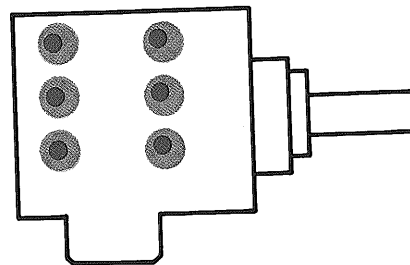
- Patterns A and B are connected.
- ⊙ Patterns A and C are connected.
- Patterns A and D are connected.
- △ Patterns B and C are connected.
- ▲ Patterns B and D are connected.
- ◻ Patterns C and D are connected.
- ⊖ Patterns A, B and C are connected.
- ⊕ Patterns A, B and D are connected.
- ⊗ Patterns A, C and D are connected.
- ⊙ Patterns B, C and D are connected.
- △ Patterns A, B, C and D are connected.
- Only pattern A is connected.
- ⬢ Only pattern B is connected.
- ⬡ Only pattern C is connected.
- Only pattern D is connected.

The non-mark indicates no connection.

## Soldering side



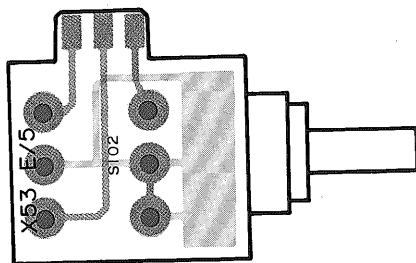
A pattern  
D pattern



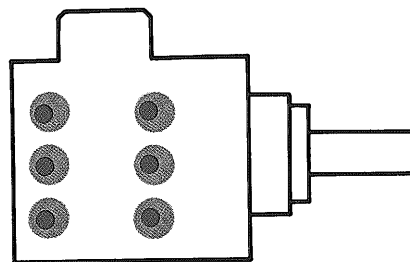
B pattern  
C pattern

# CONTROL UNIT (X53-342X-XX) E/5

## Component side

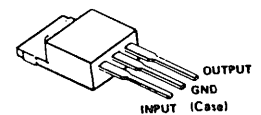


A pattern  
D pattern

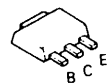


B pattern  
C pattern

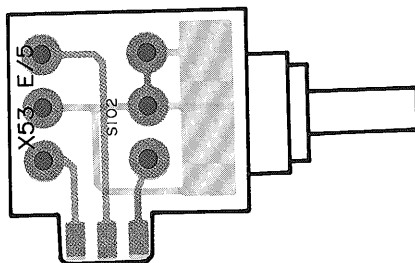
## MA110



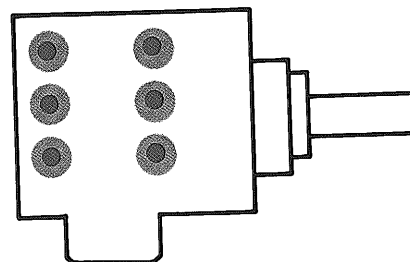
## 2SB798



## Soldering side



A pattern  
D pattern



B pattern  
C pattern

Downloaded by ☐  
RadioAmateur.EU