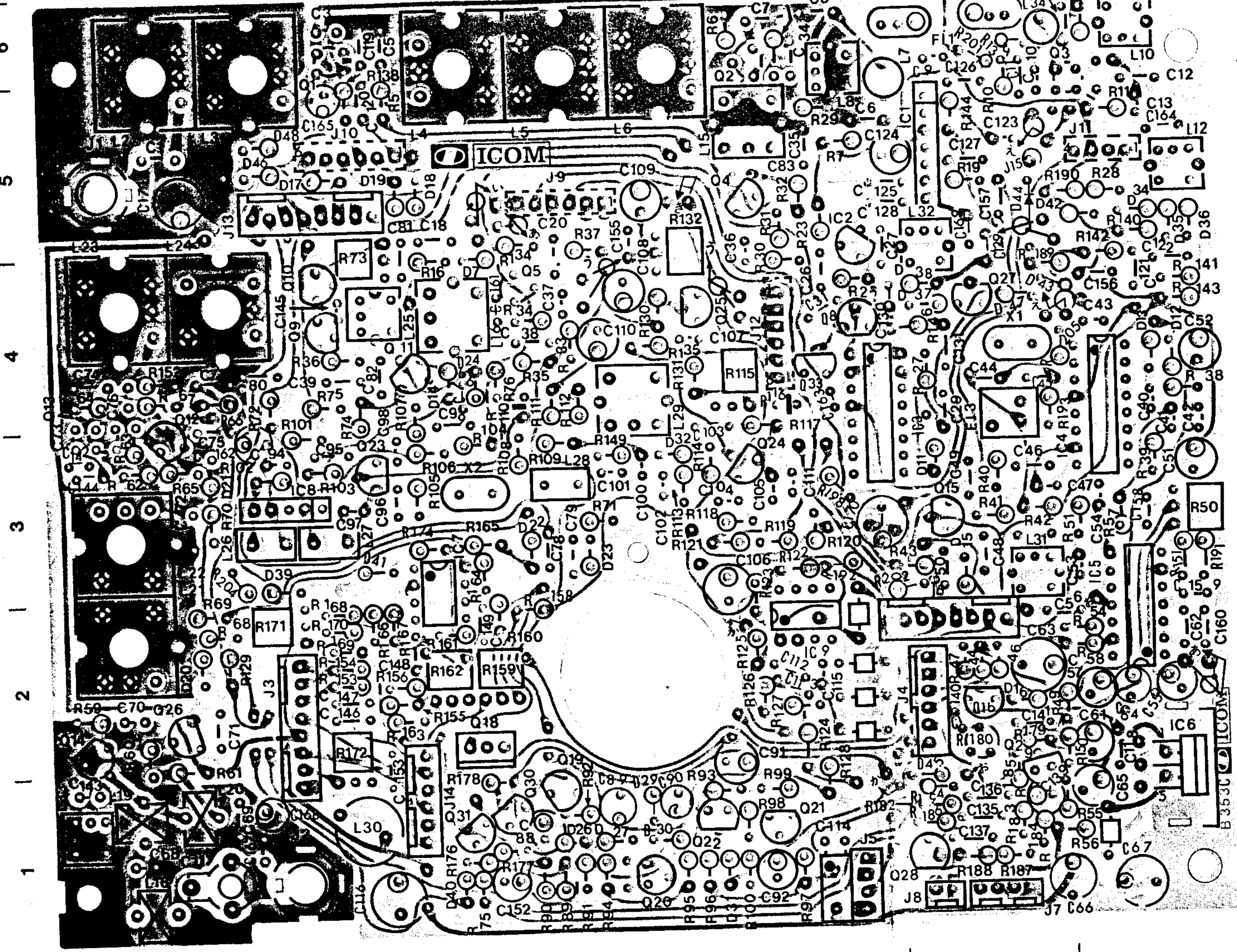


MAIN UNIT

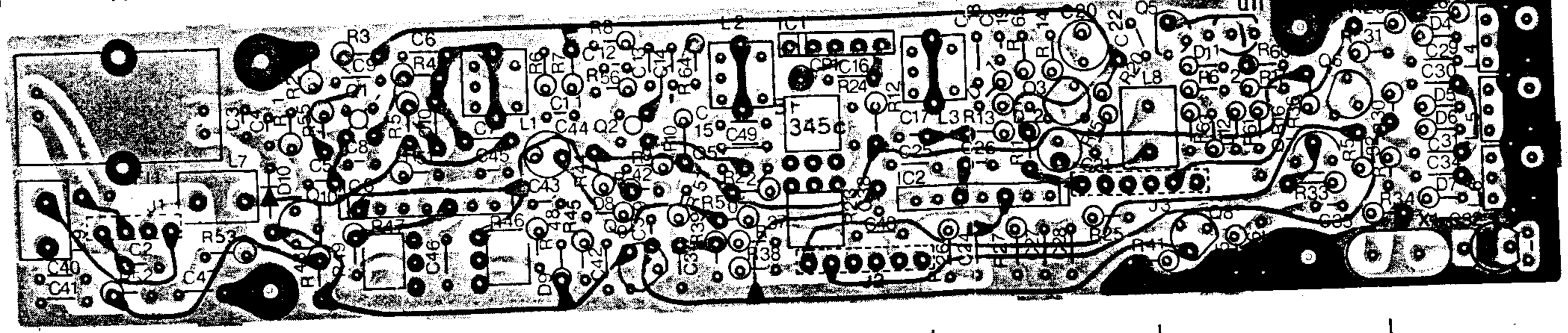
A | B | C | D | E | F | G



Scanned by IW1AXR
 Downloaded by
 Amateur Radio Directory

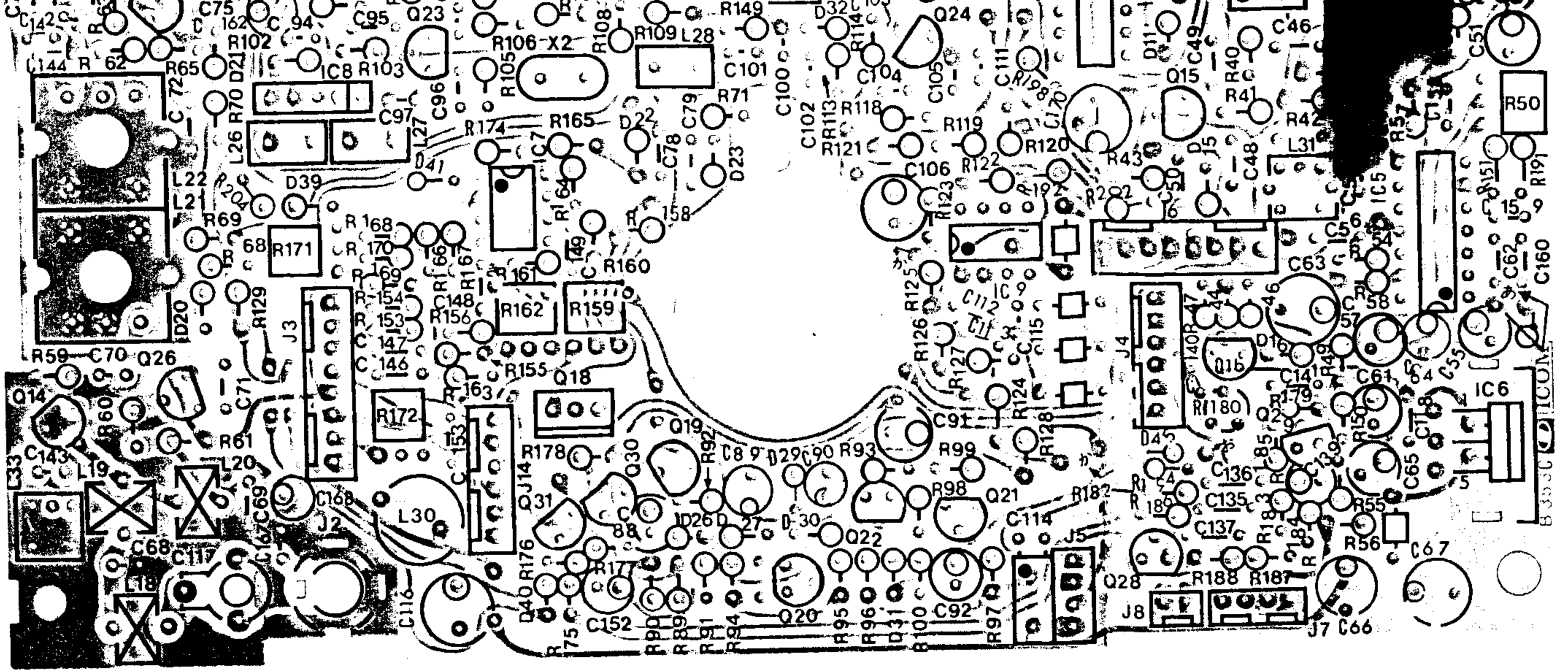
SSB UNIT

A | B | C | D | E | F | G

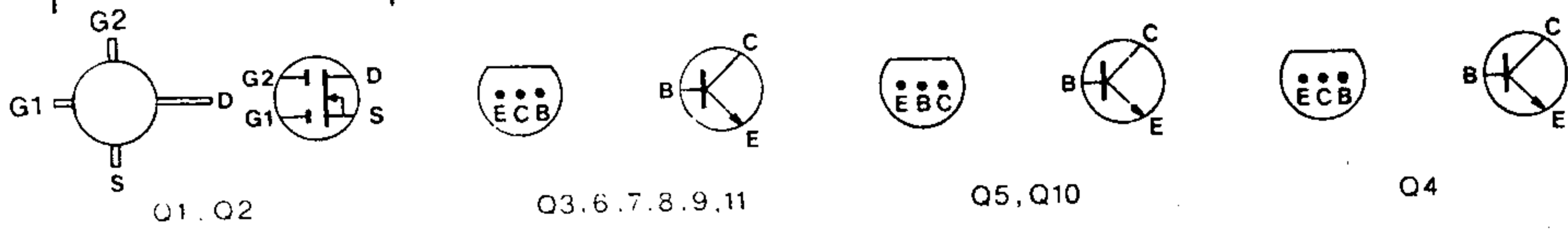
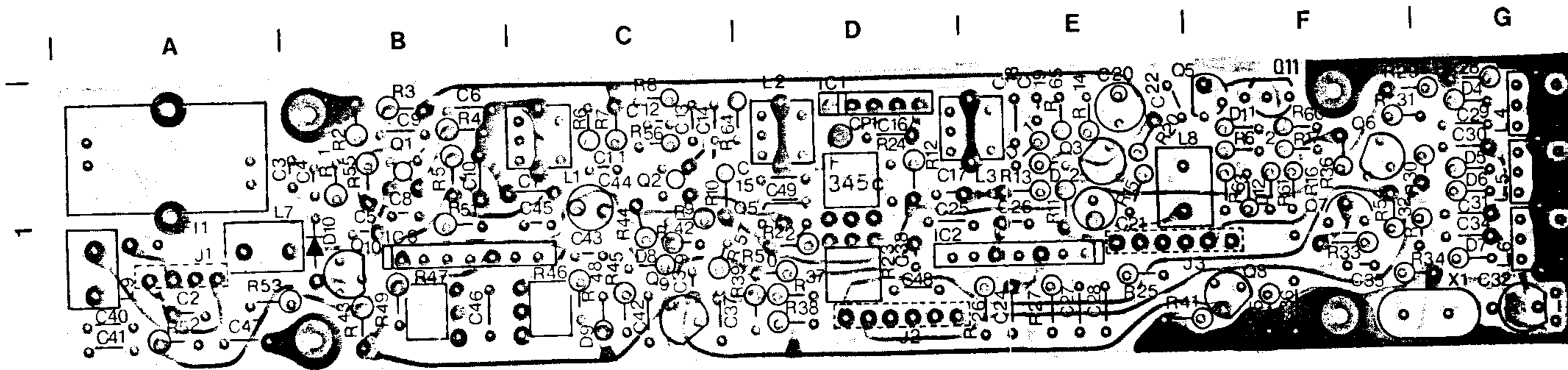


G1 S G2 D G1 S Q1, Q2 Q3, 6, 7, 8, 9, 11 Q5, Q10 Q4

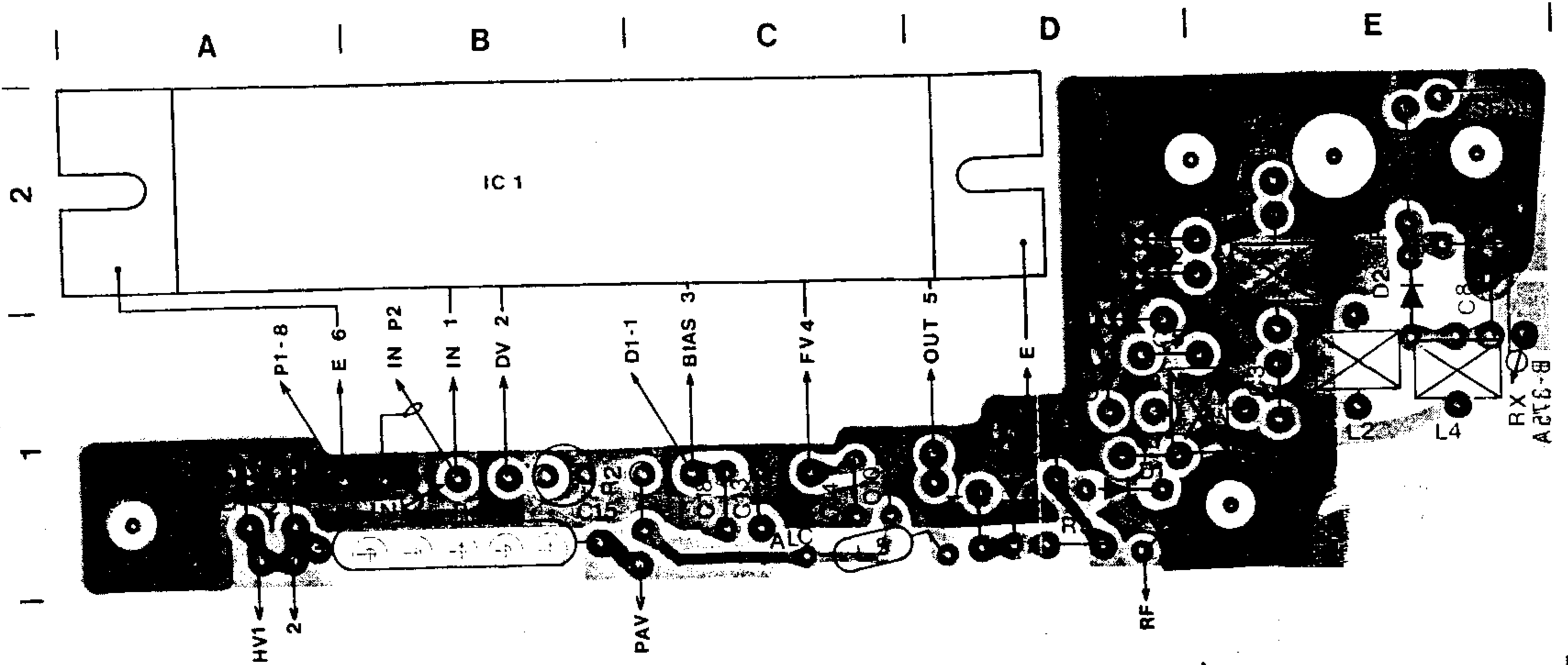
3
2
1

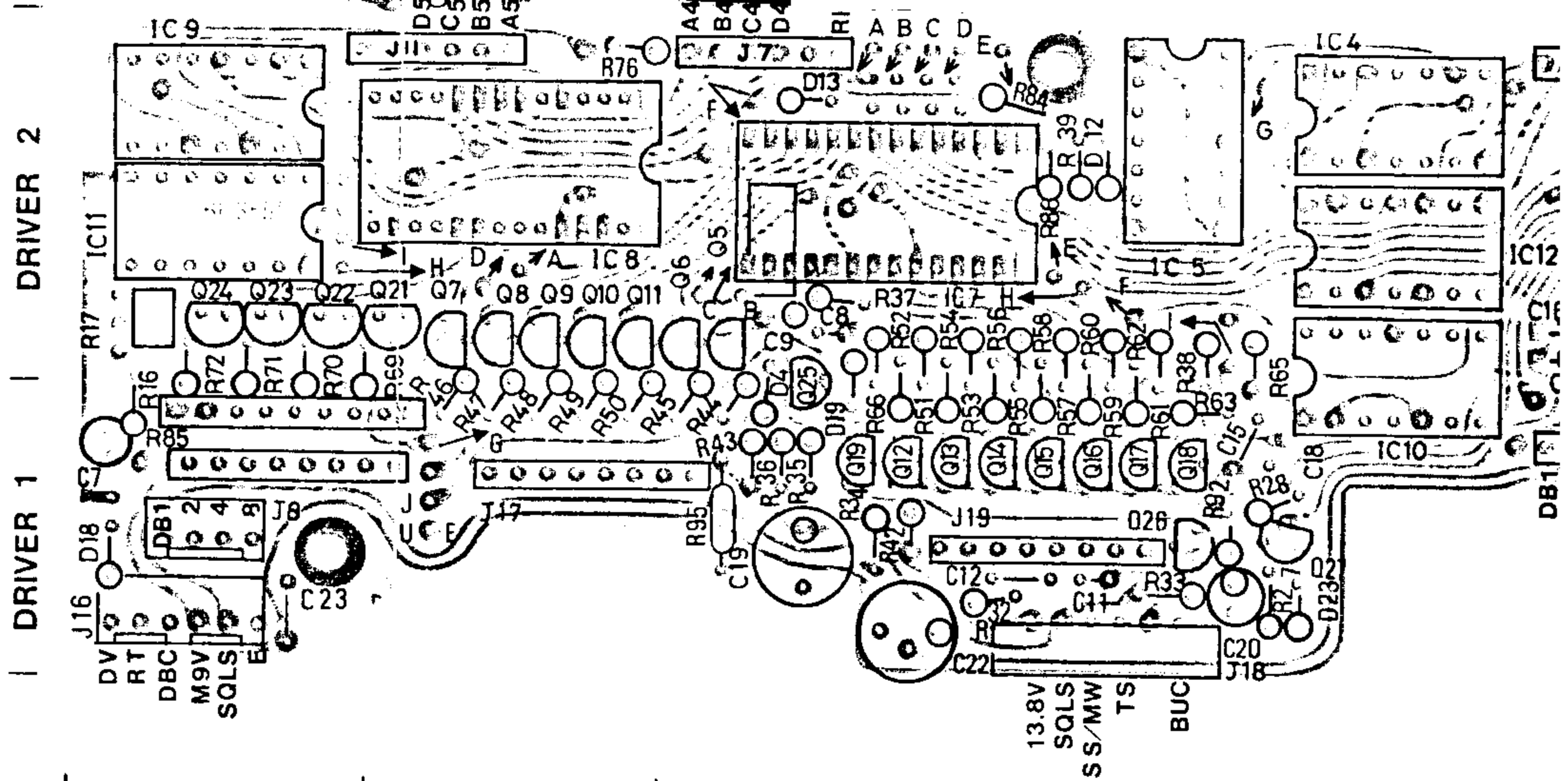
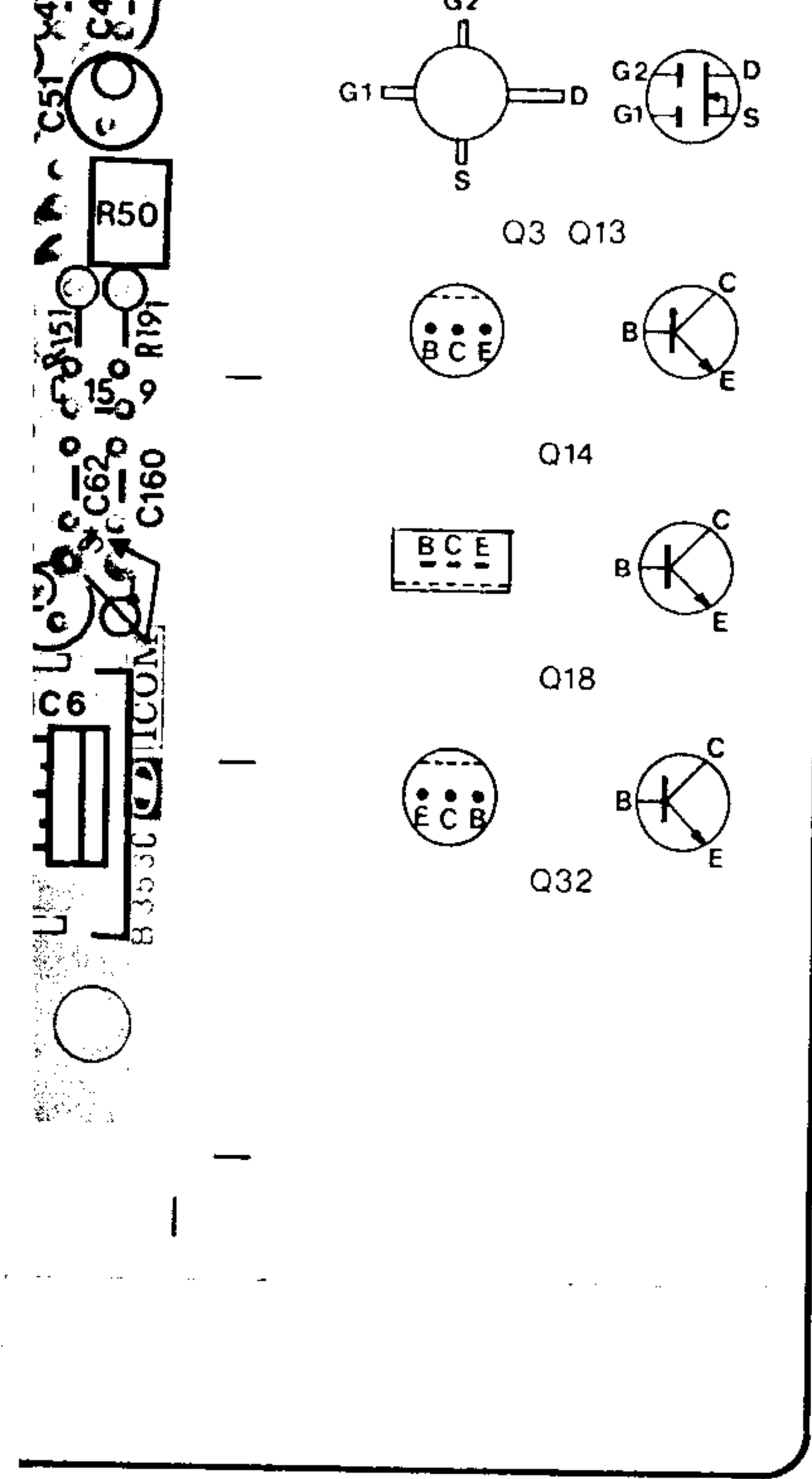


SSB UNIT



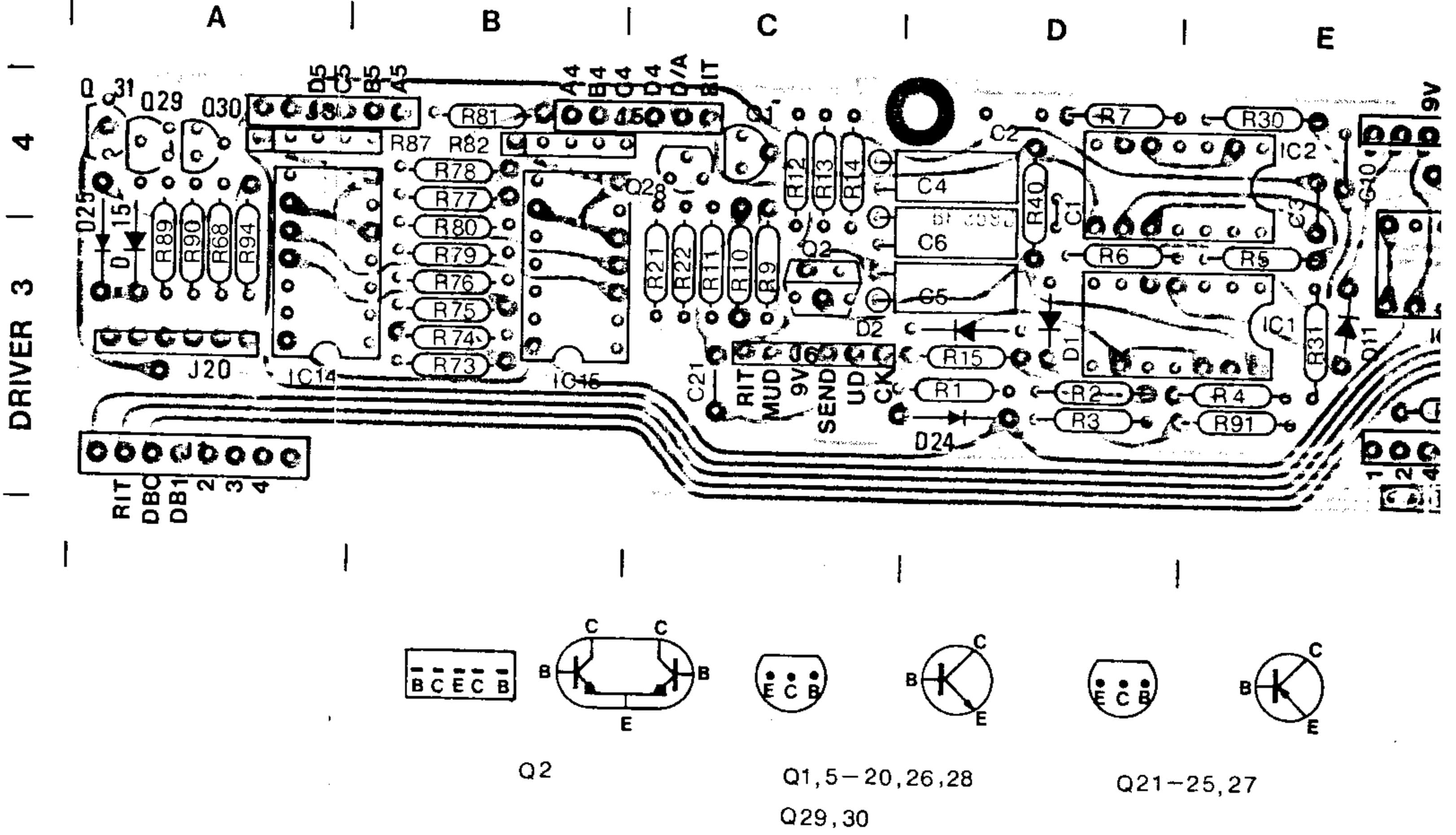
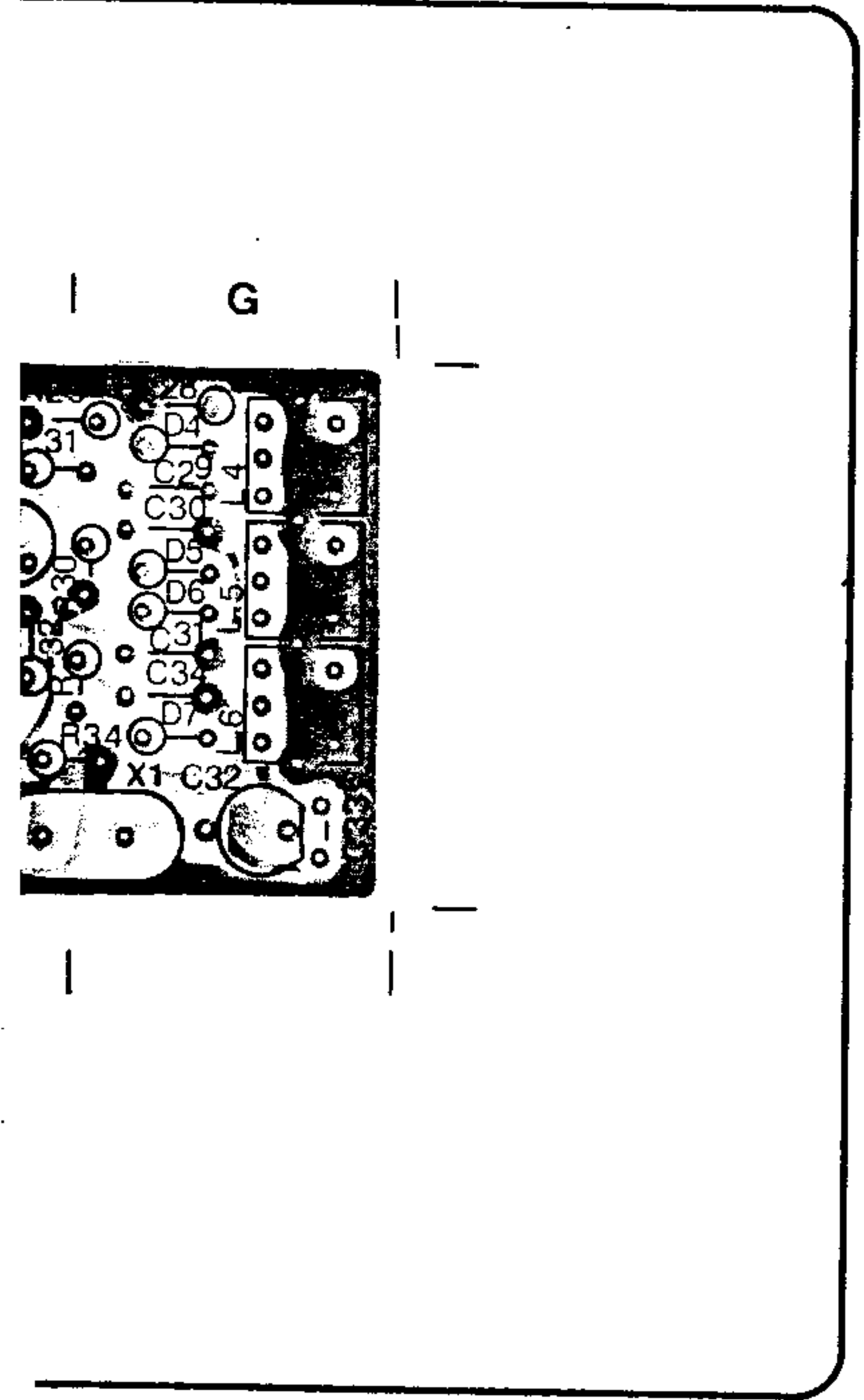
POWER AMPLIFIER UNIT





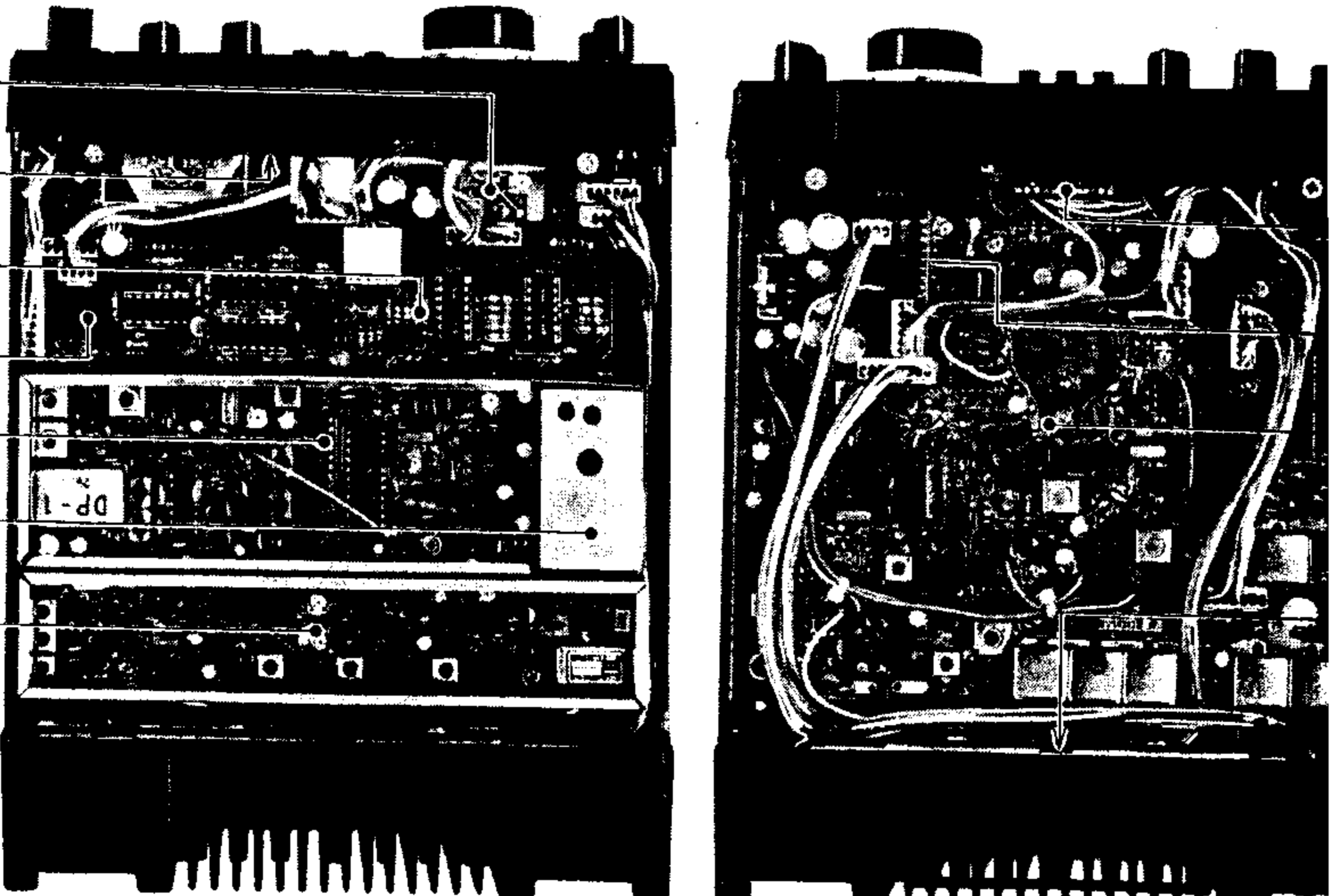
Scanned by IW1AXR
 Downloaded by
 Amateur Radio Directory

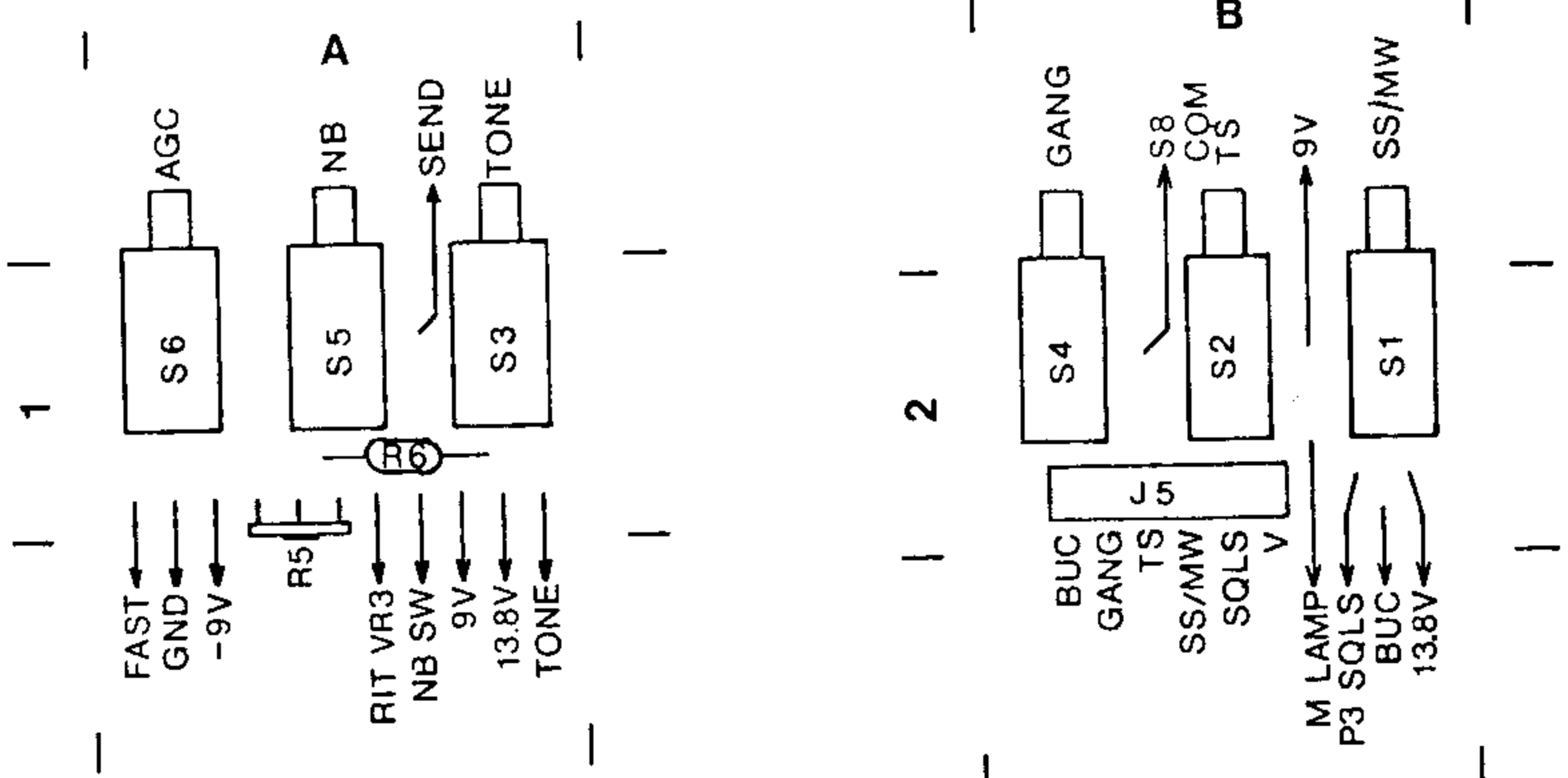
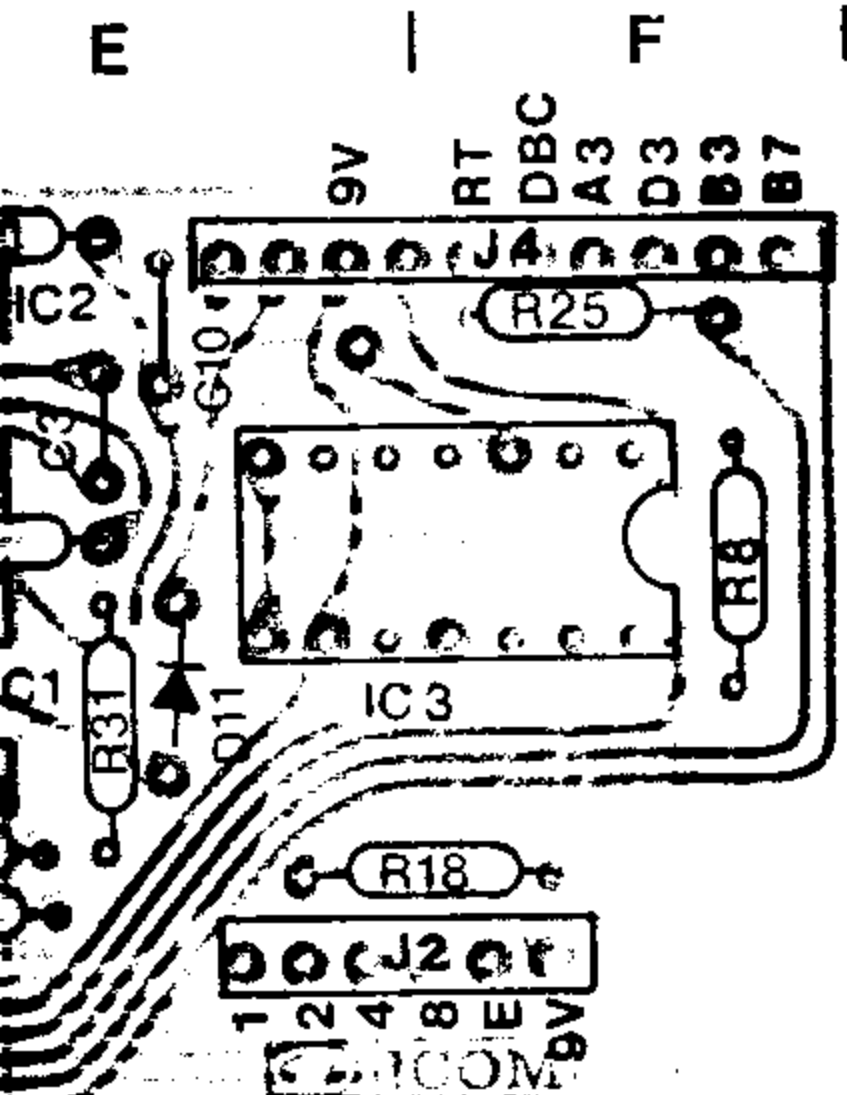
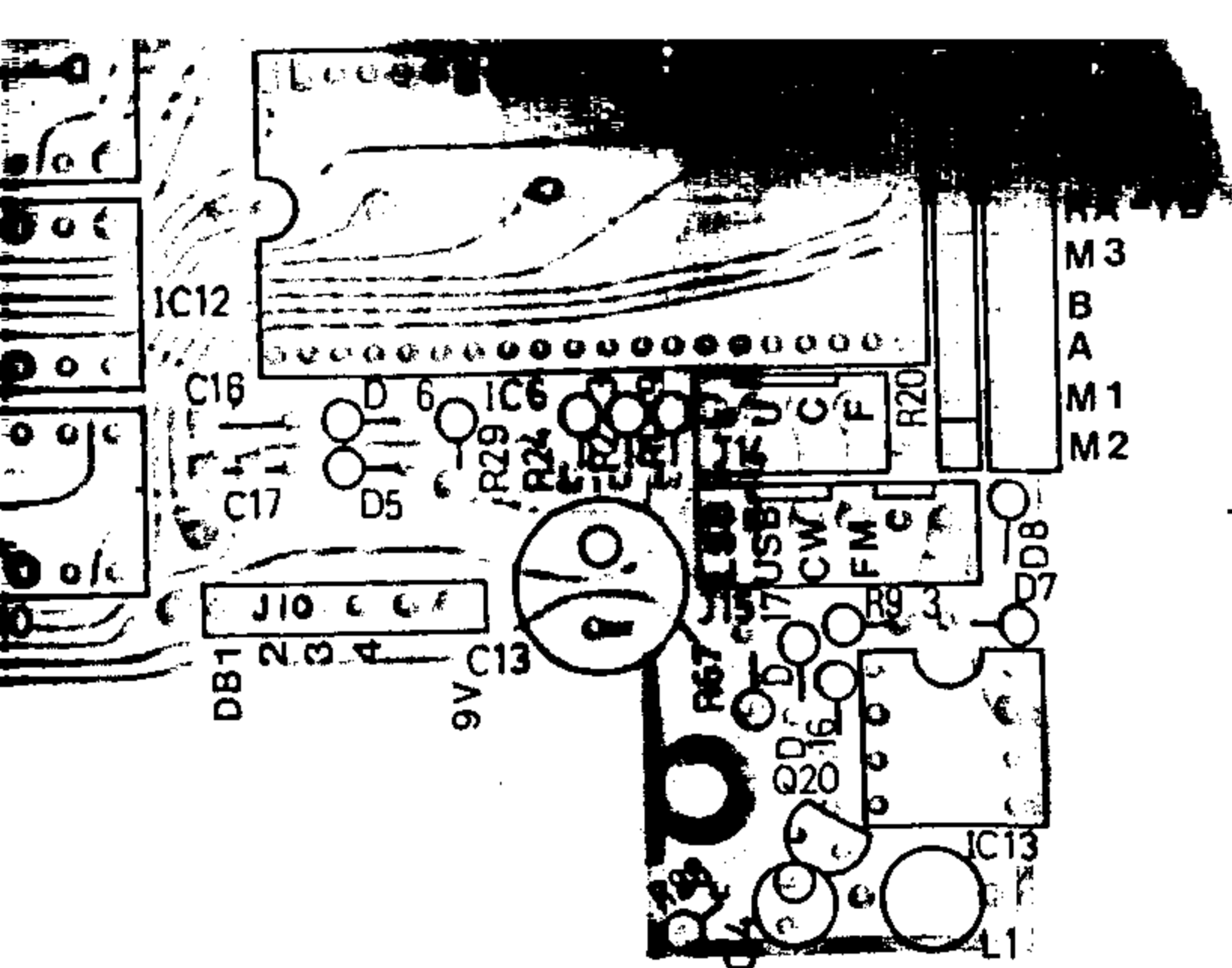
DRIVER SUB BOARD



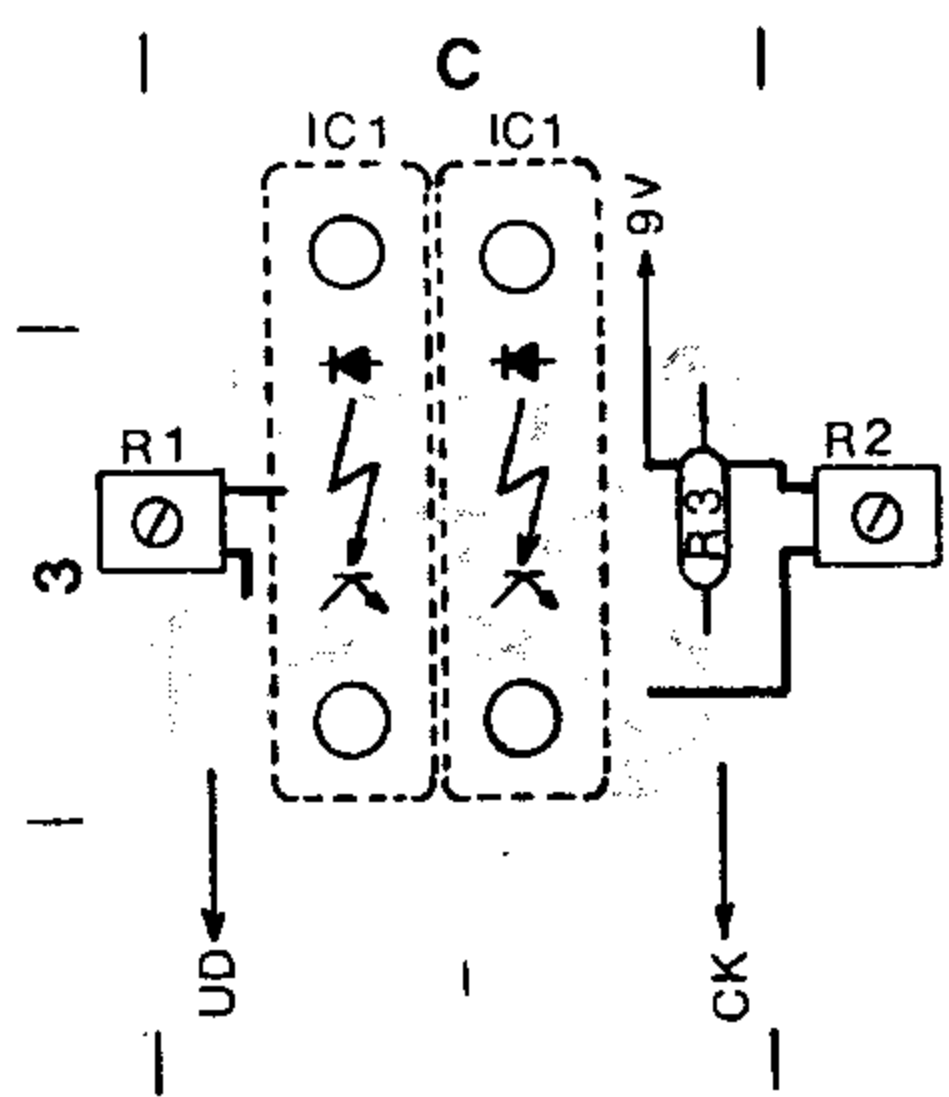
UNIT LAYOUT

- EF UNIT (LEI BOARD)
- EF UNIT (DISPLAY BOARD)
- PLL/DRIVER UNIT (SUB BOARD)
- DRIVER UNIT
- PLL UNIT
- VCO UNIT
- SSB UNIT

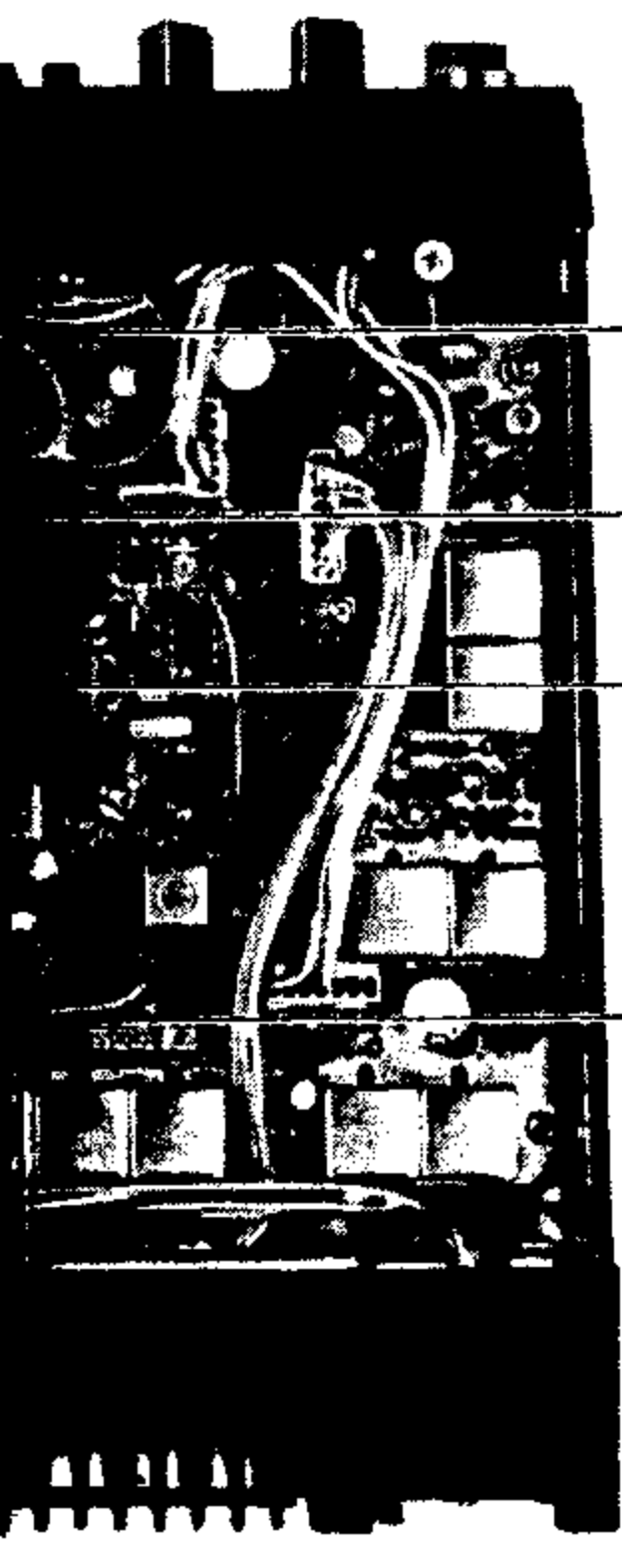
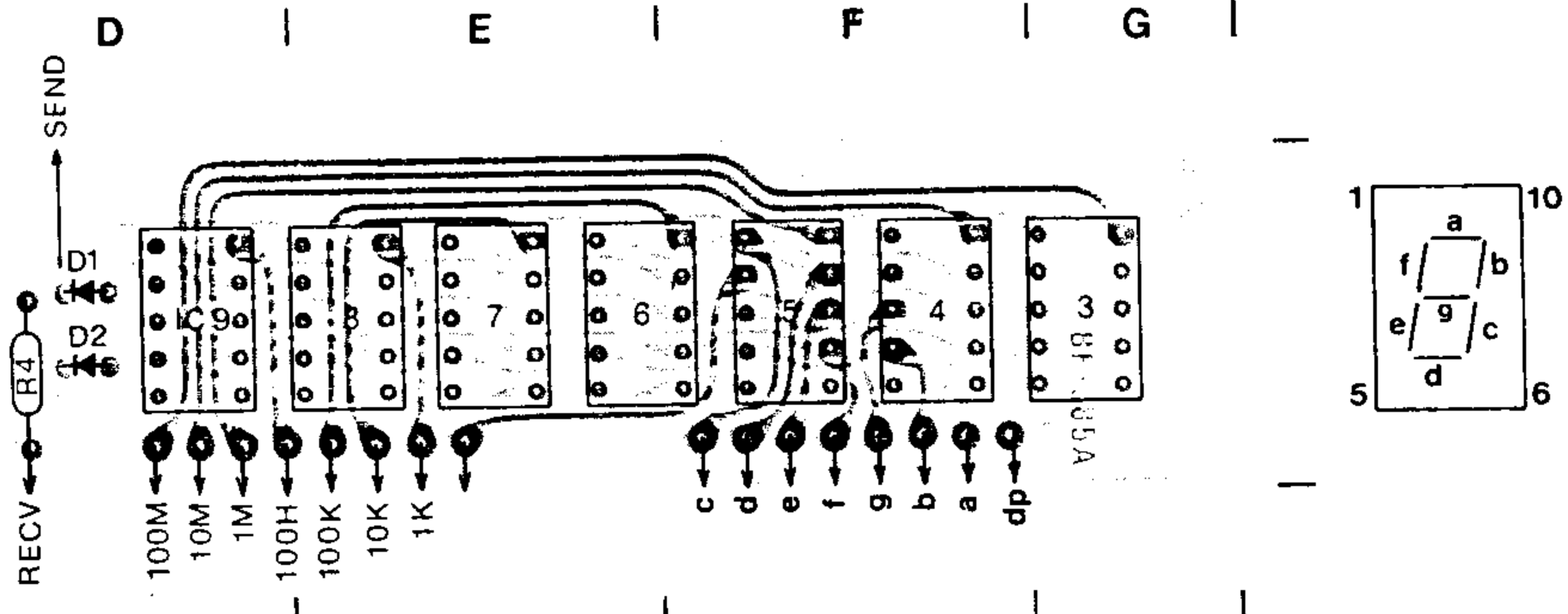




LEI BOARD



DISPLAY BOARD



- EF UNIT
(SWITCH BOARD D-E)
- tone call UNIT
(EUROPE ONLY)
- MAIN UNIT
- POWER AMPLIFIER
UNIT



ICOM INCORPORATED

Scanned by IW1AXR
 Downloaded by Amateur Radio Directory

Some components subject to change for an improvement without notice.