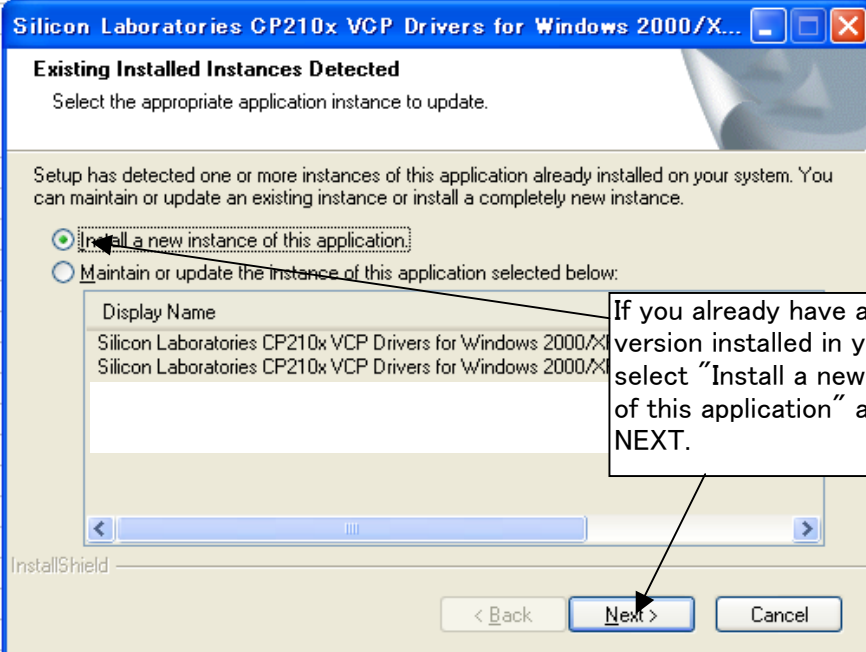
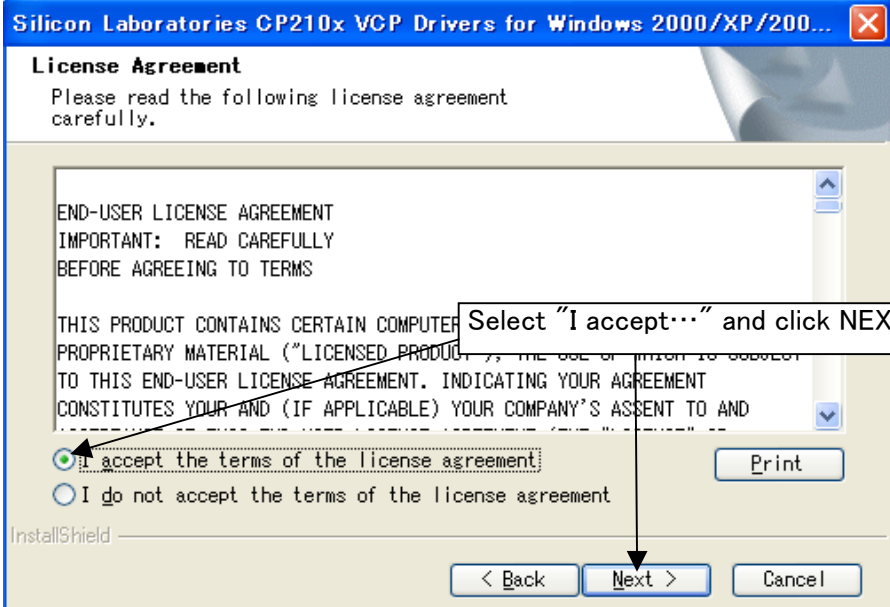


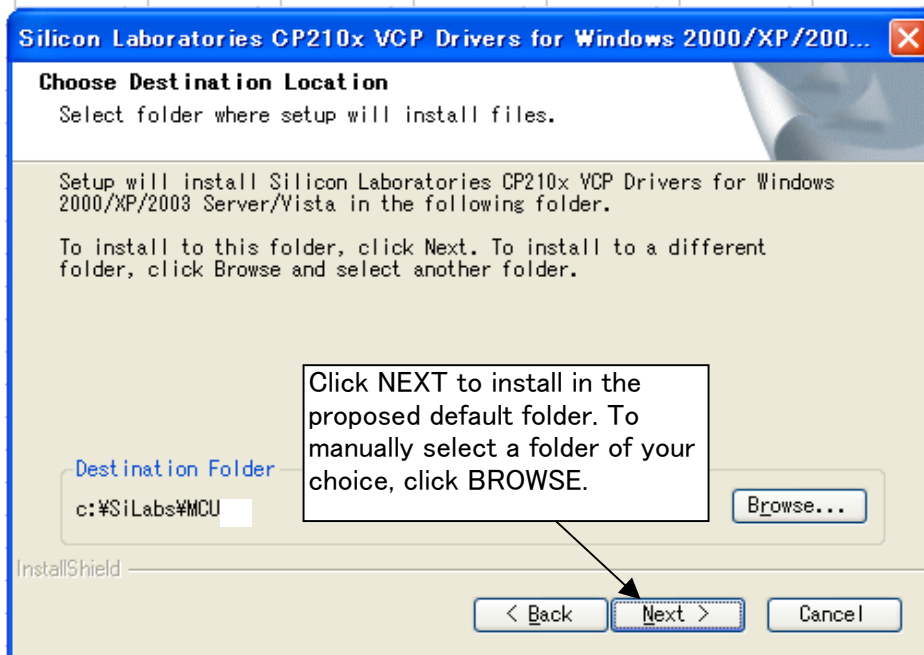
DRIVER INSTALLATION PROCEDURE

- (1)  Execute the file you have downloaded

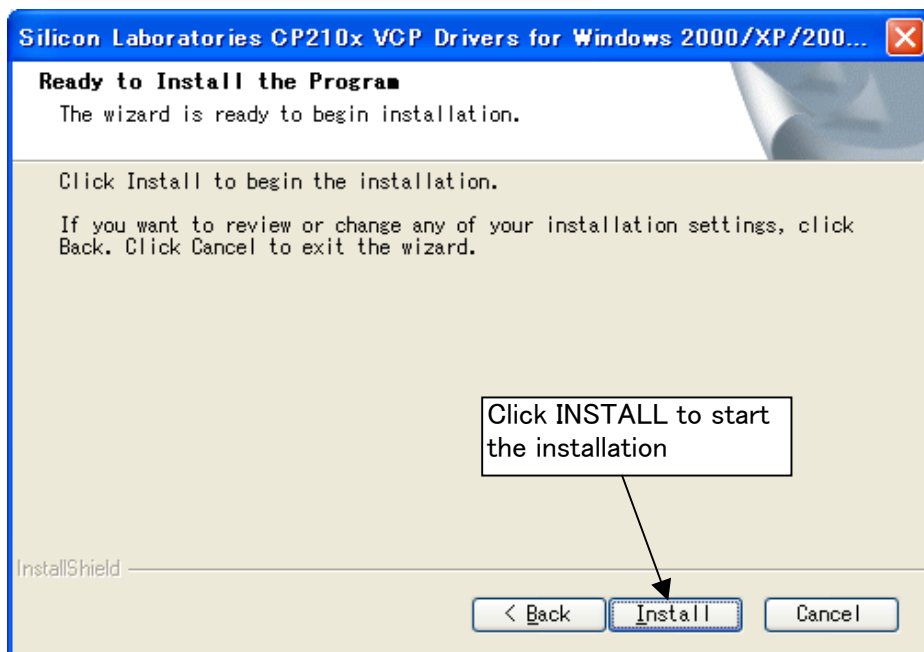
- (2)  If you already have a previous version installed in your PC, select "Install a new instance of this application" and click NEXT.

- (3)  Select "I accept..." and click NEXT.

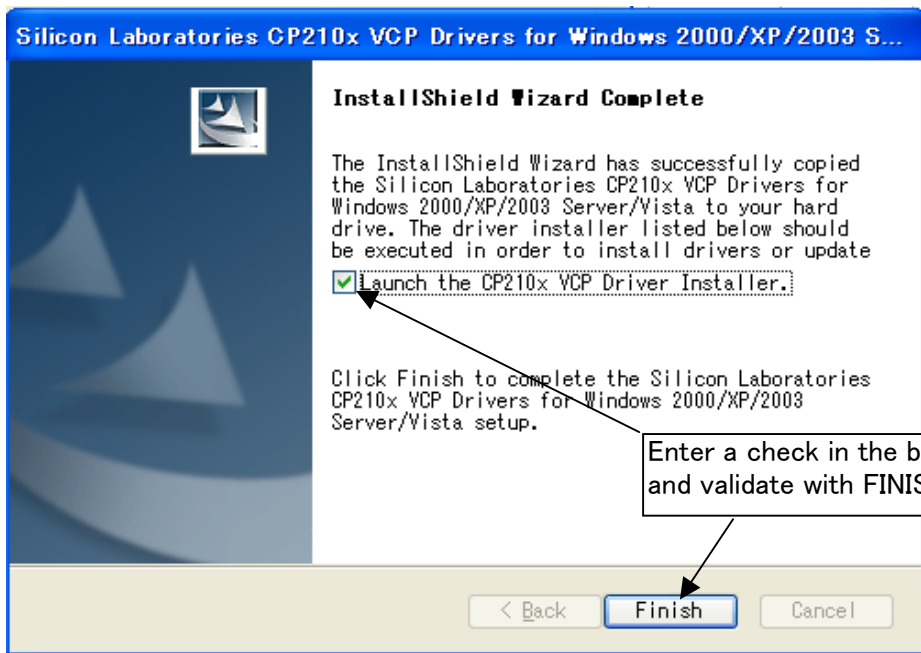
(4)



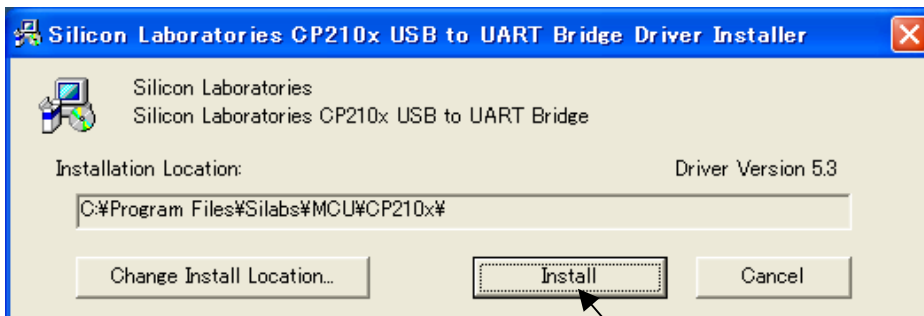
(5)



(6)



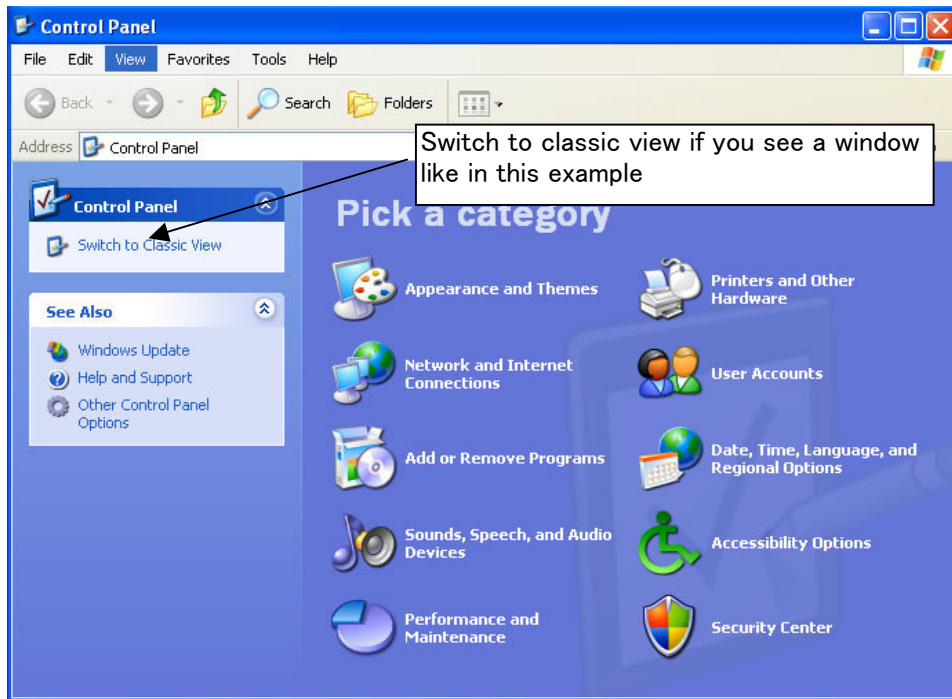
(7)



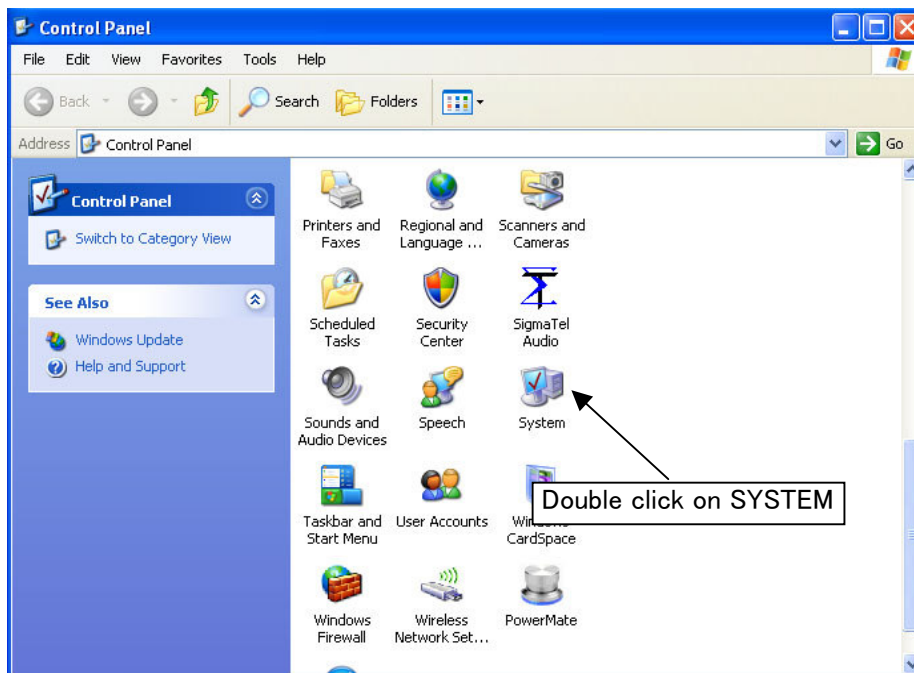
You're done!

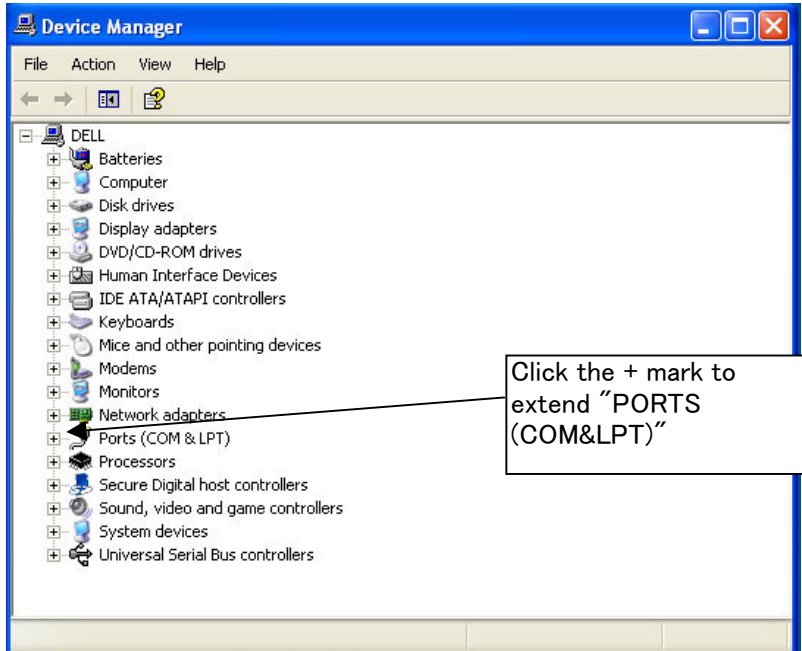
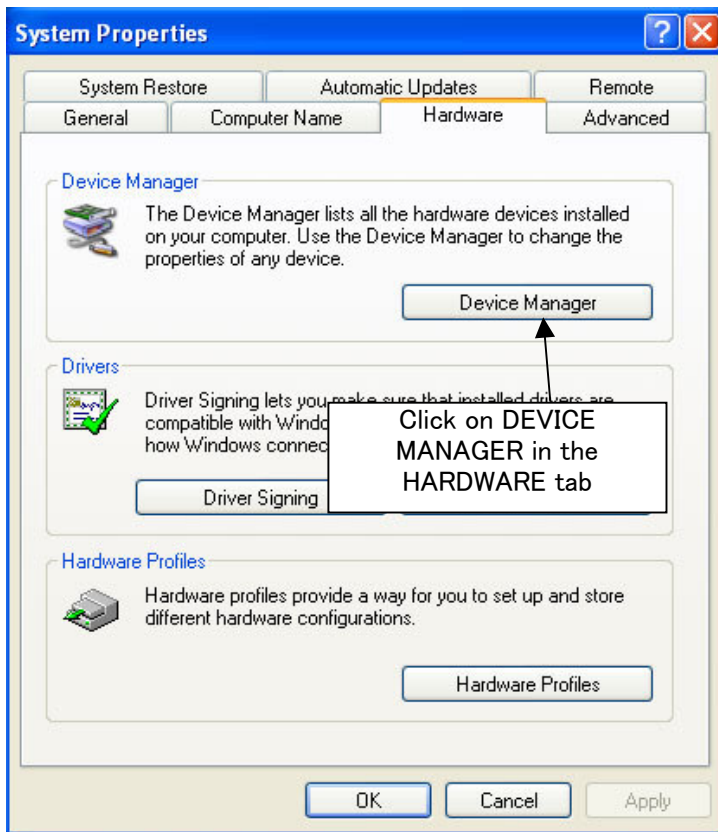
VERIFYING THE PC SETTINGS

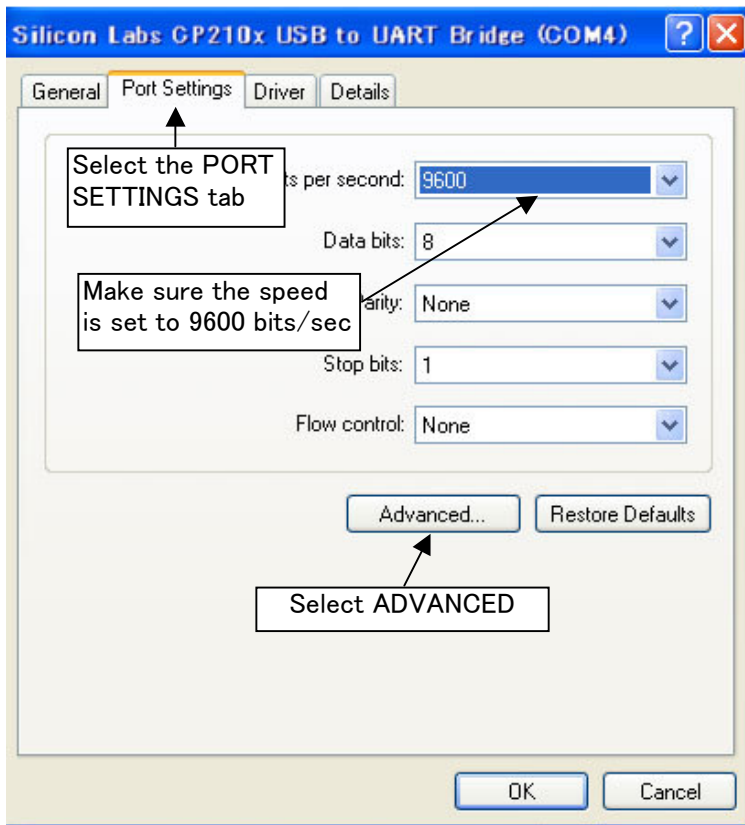
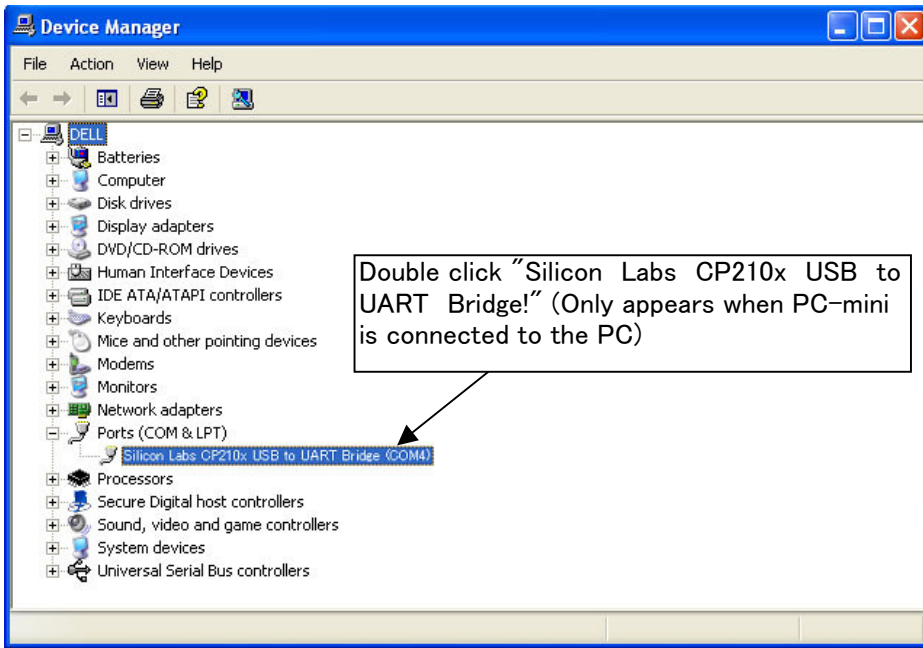
Connect AR-mini to your PC through USB
Click on START followed by CONTROL PANEL



Classic view







The image shows a Windows-style dialog box titled "Advanced Settings for COM6". It has a blue title bar with a question mark icon and a close button. The main area is light beige and contains the following elements:

- A checked checkbox labeled "Use FIFO buffers (requires 16550 compatible UART)".
- Two lines of instructional text: "Select lower settings to correct connection problems." and "Select higher settings for faster performance."
- A "Receive Buffer" slider ranging from "Low (1)" to "High (14) (14)". The slider is currently positioned at the "High (14)" end.
- A "Transmit Buffer" slider ranging from "Low (1)" to "High (14) (14)". The slider is currently positioned at the "Low (1)" end.
- A "COM Port Number" dropdown menu at the bottom left, currently showing "COM4".
- Three buttons on the right side: "OK", "Cancel", and "Defaults".

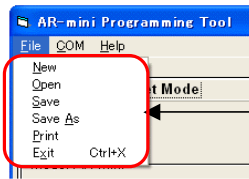
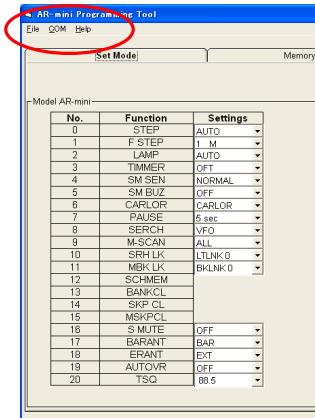
A white callout box with a black border is overlaid on the bottom right of the dialog. It contains the following text:

Select the COM port number to which AR-mini is connected (Usually COM1 or COM2). This number might vary when you connect or disconnect other USB devices to your PC. Validate your choice with OK.

Two black arrows point from the callout box to the "COM Port Number" dropdown and the "OK" button.

QUICK GUIDE to the AR-mini Programming Tool

MENU BAR



New: Start a new job

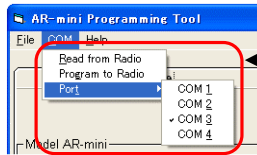
Open: Open previously saved job

Save: Save what you are doing to the same file

Save As: Save what you are doing to a new file

Print: Print your memory data

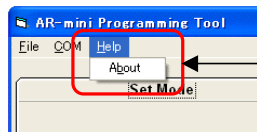
Exit: Exit this program



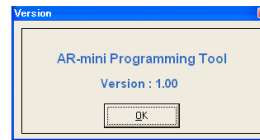
Read from Radio: Import data from AR-mini receiver

Program to Radio: Export data to AR-mini receiver

Port: Select the port to which AR-mini is connected

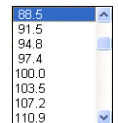
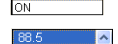
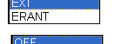
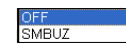
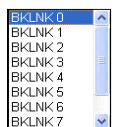
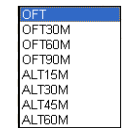
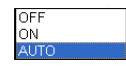
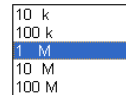
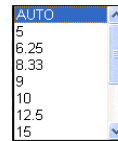
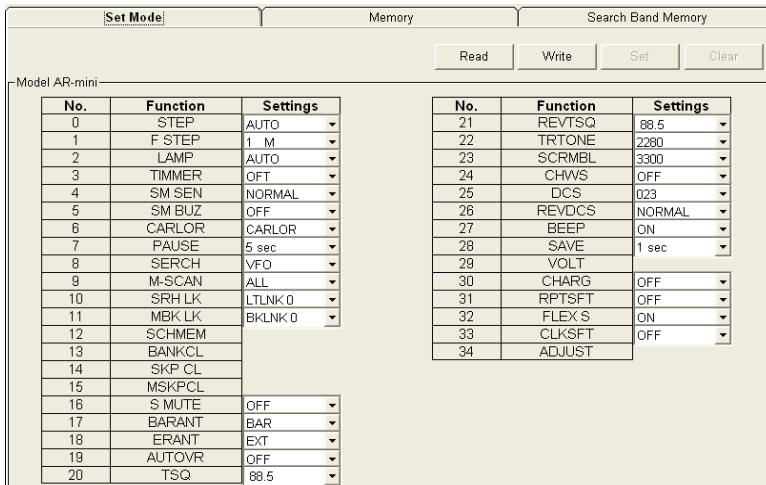


About: Programming Tool's version number



SETTINGS

To modify settings of your AR-mini receiver



MEMORY MANAGEMENT

Memory channel

Set Mode Memory Search Band Memory

Read Write Clear Clear All

Model AR-mini

No.	Frequency	NAME	Mode	TONE SELECT	TSQ	REV TSQ	DCS	REV DCS	SCALR	TRAIN
000										
001										
002										
003										
004										
005										
006										
007										
008										
009										
010										
011										
012										
013										
014										
015										
016										
017										
018										
019										
020										
021										

Click on the memory channel number you need to edit

Edit Memory To save all your entries

Enter the frequency Up to 6 characters

No. 000 Frequency MHz NAME Mode

Either AM, FM or WFM

TONE SELECT TSQ R TSQ V.INV

DCS R DCS TRAIN

Japanese version only

Active or not depending on your choice in TONE SELECT

VFO
TSQ
REV TSQ
TRAN
V.INV
DCS

If SET does not bring you to the previous screen, your entries are incorrect or insufficient.

Examples of correct entries

Edit Memory

No. 000 Frequency 84.70000 MHz NAME F-YOKO Mode wFM

TONE SELECT VFO TSQ R TSQ V.INV

DCS R DCS TRAIN

Edit Memory

No. 000 Frequency 433.20000 MHz NAME CLUB Mode FM

TONE SELECT TSQ 885 R TSQ V.INV

DCS R DCS TRAIN

SEARCH BAND MEMORY

Set Mode Memory **Search Band Memory**

Read Write Set Clear

Model AR-mini

No.	Low Frequency	Upper Frequency
L00	0.10000	1299.99500
L01	0.10000	1299.99500
L02	0.10000	1299.99500
L03	0.10000	1299.99500
L04	0.10000	1299.99500
L05	0.10000	1299.99500
L06	0.10000	1299.99500
L07	0.10000	1299.99500
L08	0.10000	1299.99500
L09	0.10000	1299.99500
L10	0.10000	1299.99500
L11	0.10000	1299.99500
L12	0.10000	1299.99500
L13	0.10000	1299.99500
L14	0.10000	1299.99500
L15	0.10000	1299.99500
L16	0.10000	1299.99500
L17	0.10000	1299.99500

Set Mode Memory **Search Band Memory**

Read Write Set Clear

Model AR-mini

No.	Low Frequency	Upper Frequency
L00	0.10000	1299.99500
L01	0.10000	1299.99500
L02	0.10000	1299.99500
L03	0.10000	1299.99500
L04	0.10000	1299.99500
L05	0.10000	1299.99500
L06	0.10000	1299.99500
L07	0.10000	1299.99500
L08	0.10000	1299.99500
L09	0.10000	1299.99500
L10	0.10000	1299.99500
L11	0.10000	1299.99500
L12	0.10000	1299.99500
L13	0.10000	1299.99500
L14	0.10000	1299.99500
L15	0.10000	1299.99500
L16	0.10000	1299.99500
L17	0.10000	1299.99500

No.	Low Frequency	Upper Frequency
L00	0.10000 MHz	1299.99500 MHz

Click on the memory line of your choice to edit the content

Read Write **Set** Clear

Model AR-mini

No.	Low Frequency	Upper Frequency
L00	51.00000	53.99000
L01	0.10000	1299.99500
L02	0.10000	1299.99500
L03	0.10000	1299.99500
L04	0.10000	1299.99500
L05	0.10000	1299.99500
L06	0.10000	1299.99500
L07	0.10000	1299.99500
L08	0.10000	1299.99500
L09	0.10000	1299.99500
L10	0.10000	1299.99500
L11	0.10000	1299.99500
L12	0.10000	1299.99500
L13	0.10000	1299.99500
L14	0.10000	1299.99500
L15	0.10000	1299.99500
L16	0.10000	1299.99500
L17	0.10000	1299.99500

No.	Low Frequency	Upper Frequency
L00	51.00000 MHz	53.99000 MHz

Enter the desired LOW and UPPER frequencies and validate with SET

ERASING MEMORY

Set Mode **Memory** Search Band Memory

Read Write **Clear** Clear All

Model AR-mini

No.	Frequency	NAME	Mode	TSQ	REVTSQ	DCS	REVDCS	SCALR	TRAM
000	82.50000		WFM	VFO					
001	84.70000		WFM	VFO					
002	80.00000		WFM	VFO					
003	51.02000		FM	VFO					
004									
005									
006									
007									
008									
009									
010									
011									
012									
013									
014									
015									
016									
017									
018									
019									
020									
021									

Select the memory channel number you wish to erase and click on CLEAR.

To erase all memory channels, click on CLEAR ALL