

How to enable SkyCommand on european TM-D710E – 25.10.2007 LA3QMA

Open top cover.

Remove all cables

Remove all screws

Unsolder the antenna wire on the connector side **not on the print**.

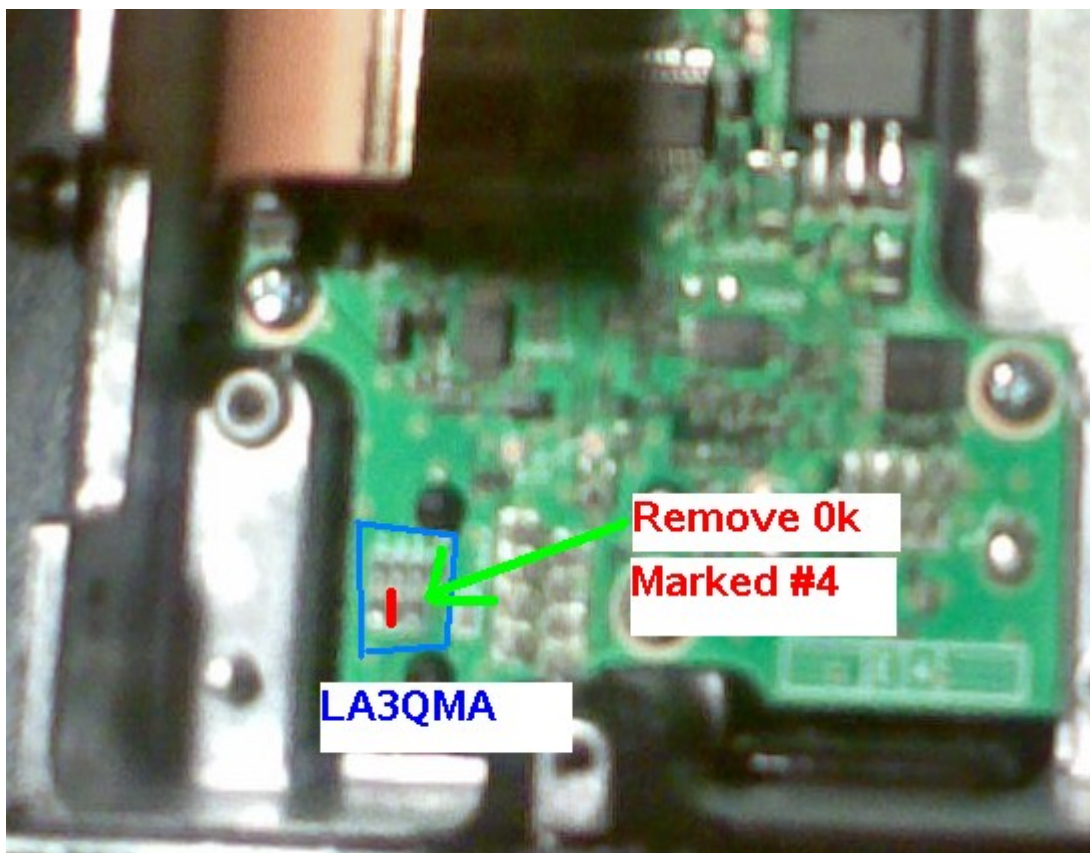
(Marked as #1 on the last picture)

Remove 4 screws under the print marked with blue

Remove the print.

Remove the screws from the last print.

Unsolder the 0k resistor marked “4”.



Reverse the process and power up.

Voila you have SkyCommand on the TM-D710E

Change the default setting of PF1 and PF2 as they now are default to WX-memory channels.

Kai Gunter Brandt

LA3QMA

Downloaded by ☐
RadioAmateur.EU